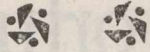
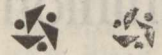
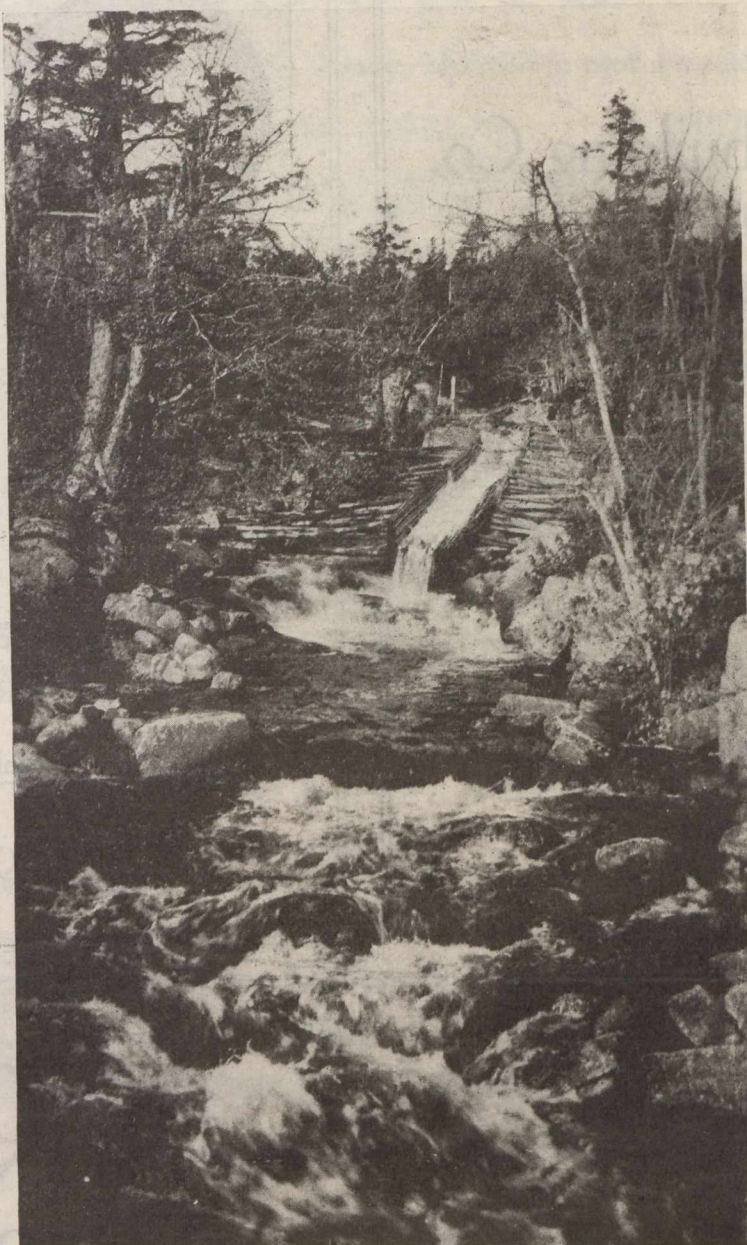
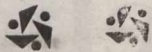


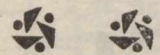
Nova Scotia Water Power



As a result of investigations carried on by the Nova Scotia authorities in co-operation with the Dominion Water Power Branch, Interior Department, Ottawa, revealing water power assets of considerable magnitude, The Nova Scotia Power Commission was organized under comprehensive legislation, to undertake the development of certain of these powers.



The first undertaking of the Commission is that of St. Margaret's Bay, of which a view is shown herewith, where 8,000 H.P. is now being installed, which will later be increased to 12,000 H.P. as a start to provide Halifax with an adequate supply of Hydro-Electric energy.



For further information write

W. B. MacCOY, K. C.,

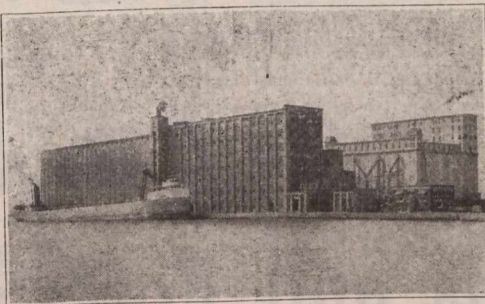
Secretary Industries and Immigration

HALIFAX, NOVA SCOTIA

CANADA'S GREATEST FLOUR MILL.

This mill supplied more flour to the Allies than any other mill in the world

Domestic Brand **KINGS QUALITY**



Other mills at Medicine Hat Kenora Brandon Thorold Welland and Dresden

Export Brand **NELSON FLOUR**

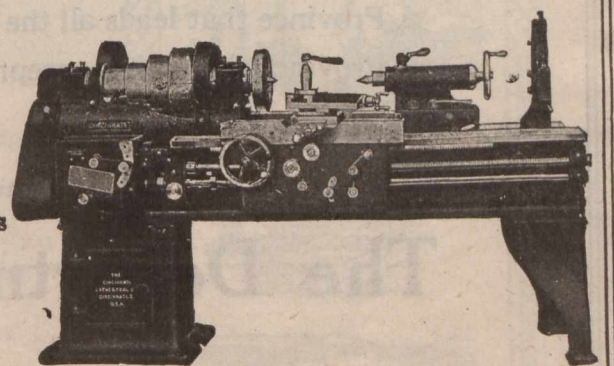
The Maple Leaf Mill at Port Colborne, Ont.

—TOTAL DAILY CAPACITY, 17,000 BARRELS.—

MAPLE LEAF MILLING COMPANY, LTD.
HEAD OFFICE TORONTO, CAN.

“FOSS”

- Machine Tools
- Small Tools
- Concrete Mixers
- Contractors' Equipment



THE GEO. F. FOSS MACHINERY & SUPPLY CO. Limited.
305 St. James St., MONTREAL.