

## NEW COMPANIES.

A. J. Chapman, W. F. Tait, H. W. Palmer, all of Dorchester, N. B., and others, are seeking incorporation as the United Paint Company, Limited.

A. H. Cummings & Son, Limited, Coaticook, Que., incorporated to carry on a general lumber and contracting business, capital \$140,000. Incorporators, M. A. Cummings, P. T. Baldwin, J. F. Wilson, all of Coaticook, A. O. Norton, of Boston, Mass., and others.

Roxton Tool & Mill Company, Limited, Roxton Pond, Que., incorporated, capital \$100,000. Incorporators, W. S. Bullock, C. C. A. Bullock, F. Poilier, H. Rainaud and O. Pepon, all of Roxton Pond.

The Allan McIntosh Company, Limited, Montreal, Que., incorporated to carry on a general contracting business and manufacture fire proofing preparations, capital \$19,000. Incorporators, H. H. Fernald, of Boston, Mass., R. Adair, R. C. McMichael, F. G. Bush, and M. J. O'Brien, all of Montreal.

Warden King, Limited, Montreal, Que., incorporated to carry on business as iron founders, machinists, etc., capital \$1,000,000. Incorporators, J. C. King, L. A. Payette, R.

## Portland Cement

### Monarch Brand



Highest quality—guaranteed to fulfill the requirements of specifications for Portland Cement approved of by the Canadian and American Societies of Civil Engineers.

Prompt shipments from mill or stock at Fort William and Port Arthur.

**THE LAKEFIELD PORTLAND CEMENT CO., LIMITED**  
LAKEFIELD, ONT.



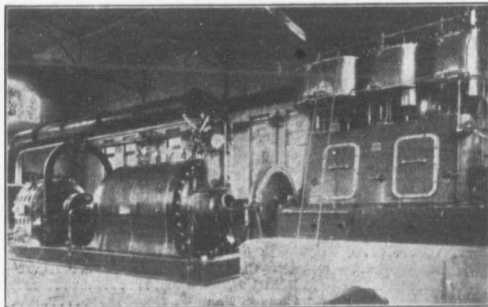
## "Lehigh"

### Portland Cement

Capacity 20,000 Barrels Per Day.

The "Lehigh Portland Cement Company, Limited," are also now building a plant at Belleville, Ont., of 750,000 barrels annual capacity. Until this plant is completed all orders can be shipped from the United States. For prices, etc., address—

**THORN CEMENT CO. - Buffalo, N. Y.**  
SALES AGENTS FOR CANADA



Six Stage Turbine Pump Electric Motor and High Speed Steam Engine. Built for the Montreal Water and Power Co., to do 4550 Imperial gallons a minute against 300 feet head. Overall E.F. 70 per cent.

## PATENT

# TURBINE PUMPS

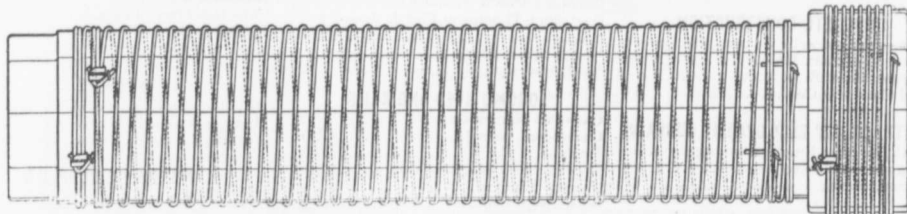
KORTUNG TWO CYCLE GAS ENGINES,  
GRAVITY AND PRESSURE FILTERS,  
WATER SOFTENING APPARATUS,  
ELECTRICAL MACHINES.

— BUILT BY —

**MATHER & PLATT, LIMITED**  
MANCHESTER, ENG.

CANADIAN AGENTS:—

**Drummond, McGill & Co., Montreal**



## The Dominion Wire Wound Wood Water Pipe

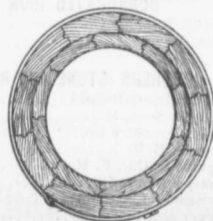
Showing special method of winding with two independent parallel wires. The great advantage of this is, that in event of one wire becoming damaged, the pipe still retains a factor of safety of 2.5.

Made only by

**THE DOMINION WOOD PIPE CO., LIMITED**  
NEW WESTMINSTER, B. C.

Also Manufacturers of Continuous Stave Pipe for Irrigation and Power Purposes.

WRITE FOR CATALOGUE.



End view of Pipe and Coupling.