

The Upward Look

Pride Brings Failure

For everyone that exalteth himself shall be abased, and he that humbleth himself shall be exalted.—St. Luke 13: 14.

God resisteth the proud, but giveth grace unto the humble.—James 4: 6.

One of the saddest sights we can see in Christian work is men and women who, having once been filled with God's Holy Spirit, have unconsciously allowed pride to enter into their lives, with the result that their power has deserted them until they are left endeavoring to accomplish in their own might what can be performed only by means of God's grace. Pride is one of the most dangerous of all sins. It steals on us unawares. After congratulating ourselves on our success, we are apt to find suddenly that it has fastened its grip on us, and that we have been sinning grievously.

Pride follows success. Many ministers of the gospel confess that they find it their greatest stumbling block. After humbling themselves before God and seeking Him earnestly, they have been filled with "power from on high," and thus have been enabled to accom-

plish great things for His glory. Their churches have grown strong, many people have been converted by them, and, presently, men have begun to praise them, and as they have allowed themselves to listen to men they have lost their touch with God. "For they loved the praise of men more than the praise of God" (St. John 12: 43). "Whoever, therefore, will be a friend of the world is the enemy of God" (James 4: 4).

The same sin often attacks all ranks of church workers. God desires us to attend church regularly and to be devout, but if we permit ourselves to think of what men say about our earnestness as Christians, God loses all pleasure in us. God desires us to live loving, helpful lives, but if we allow ourselves to think how much better we are than others around us, that minute we cut ourselves off from God. For "God resisteth the proud, but giveth grace unto the humble." The history of the kings and great men of the ancient Jewish people is one long succession of recorded incidents of men who, while filled with God's spirit, overcame their enemies, turned defeats into victories, achieved greatness, wealth and fame, only to allow themselves to become puffed up with pride, with the result that God deserted them and their glory departed.

God does not give success to many of us, because He knows that we are unfitted for it. Pride would consume

us. We have only to think of how many of the people we know have been spoiled by pride when they have achieved success, even if only in some small degree, to realize how great is the danger that will threaten us. If, therefore, we have experienced the joy that comes with a baptism of God's Holy Spirit; if, through God's power we have been enabled to accomplish something for His glory, then let us get down very low before Him. The more God gives us, the more humble and grateful should we become. Only by keeping our thoughts centered on God, and by striving to do His will in all things can we hope to continue to walk in His favor.—J.H.N.

A Convenient Invalid Chair

One of the greatest conveniences for moving an invalid about in the home is the following simple device:



The roller is formed of small wheels, three or four inches in diameter, made of strong wood which does not split easily, and connected by and turning on an axle, also of strong wood. This axle should be somewhat longer than the width of the chair under which it is to be used.

Take any rocker which is comfortable for the invalid, and cut a groove in each rocker—deep enough to admit the axle—just under or near the back legs of the chair. After the person is seated in the chair, stand at the back of the chair, tilt it forward enough to push the roller into place, tilt it back, and roll.

Hints for the Home Cook

If your furniture, especially the heavy pieces, are in need of new cutners, have the pieces fitted with rubber, ball-bearing cutners. It makes it easy to move any piece of furniture, and the rubber will not scratch the polished woodwork of the floor.

A handful of flour bound on a cut will stop bleeding.

When boiling fish, or crabs, add a large sprig of parsley, a small white onion, and half a cup of vinegar to the water; it improves the flavor greatly.

The Sewing Room

Patterns 10 each. Order by number and size. If for children, give age; for adults, give bust measure for waists, and waist measure for skirts. Address all orders to the Pattern Department.

TUCKED BLOUSE 6561

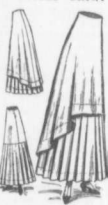
Such a blouse as this, for children, gives age; for adults, give bust measure for waists, and waist measure for skirts. Address all orders to the Pattern Department.



Material required for medium size is 3½ yds. 21 or 24, 3½ yds. 32 or 34, 1½ yds. 44 in. width 9 yds. of banding.

The pattern is cut for a 34, 36, 38, 40 and 42 in. and will be mailed on receipt of 10 cts.

MISSIE'S SKIRT WITH TUNIC 6558



Young girls are wearing a great many tunic skirts. It is worn over a plain blouse that is joined to a gored upper portion and consequently there is no bulk beneath. The foundation can be used without the tunic, as shown in the small view, and it can be finished either with a belt or with a high waist line, but when the tunic is used the proper one.

Material required for 16 yr. size is 6½ yds. 24 or 27, 3½ yds. 44 or 46, 3½ yds. 52 in. wide.

It is cut for girls of 14 and 16 yrs. and will be mailed on receipt of 10 cts.

RUSSIAN BLOUSE COAT 6542



Russian styles are exceedingly smart, and this coat represents them at their best. It can be made as illustrated or perfectly plain as shown in the small view, or it can be cut out on the line of the yoke.

Material required for medium size is 6 yds. 27, 3½ yds. 44 or 46, 3½ yds. 52 in. wide, with ½ yd. 18 for yoke and collar, 4½ yds. of banding.

The pattern is cut for a 32, 34, 36, 38 and 40 in. bust, and will be mailed on receipt of 10 cts.

SEVEN GORED MATERNITY SKIRT 6566

The skirt that is simple, yet includes a generous number of seams, is always a desirable one for maternity wear. The seams give an effect of slenderness and the many gores allow satisfactory shaping.

The skirt is cut in seven gores, which are then shaped to give the best possible lines. It is finished at the waist line with a casing and elastic that allow of increasing the size easily and satisfactorily.

Material required for medium size is 9 yds. 27 or 32, 5½ yds. 44 in. wide. The pattern is cut for a 36, 38, 40, 42, 44 and 46 in. waist, and will be mailed on receipt of 10 cts.

A USEFUL PREMIUM SURE TO PLEASE ANY WOMAN



Our 10-piece Toilet Set is made of absolutely the best grade English semi-porcelain ware. All pieces are large, full size. The decoration consists of wild flowers, prettily entwined with foliage. We can furnish it in dark blue, pink or peacock blue. Given for 5 new yearly subscriptions to Farm and Dairy. Stop Jara, with case handle, to match above set for 2 additional subscriptions.

CIRCULATION DEPT. FARM AND DAIRY PETERBORO, ONT.

"Many a dollar is lost by putting off until to-morrow. Send for catalogue to-day."

—The Philosopher of Metal Town.

No building material like this— "METALLIC"

is superior in every way. It is most economical—is easy and quick to lay or erect, saving expensive labor, and lasts a lifetime without continual repairs. Lightning, rain, wind or snow has no effect on "Metallic"—it is WEATHER, FIRE AND RUSTPROOF, the best material for all buildings.

Look over this list—all made from the finest quality sheet steel

"EASTLAKE" METALLIC SHINGLES. On buildings for 25 years, and still in perfect condition.

"METALLIC" CEILINGS AND WALLS. A handsome, sanitary decoration—lasts a lifetime.

"METALLIC" ROCK FACED SIDING. In brick or stone design for houses.

"MANITOBA" STEEL SIDING. The best for large buildings, elevators, mills, storehouses, etc.

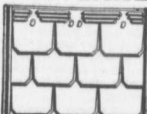
CORRUGATED IRON—GALVANIZED OR PAINTED. For implement sheds or barns, fireproof and durable.

[You should read our interesting booklet "EASTLAKE METALLIC SHINGLES" and our New Catalogue No. 70. A post card with your name and address will bring them to you at once.]

MANUFACTURERS

The **Metallic Roofing Co. Limited**
TORONTO & WINNIPEG

EASTLAKE



Steel Shingles

Agents Wanted

In some sections.

Write for Particulars.