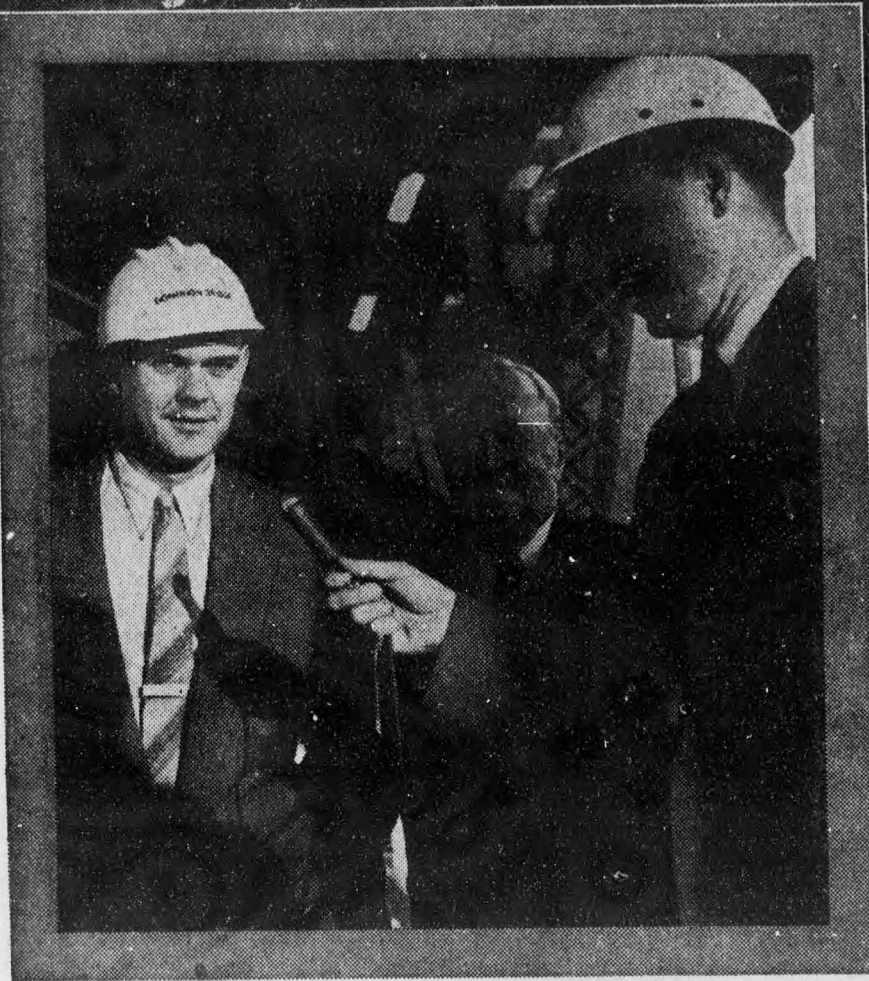
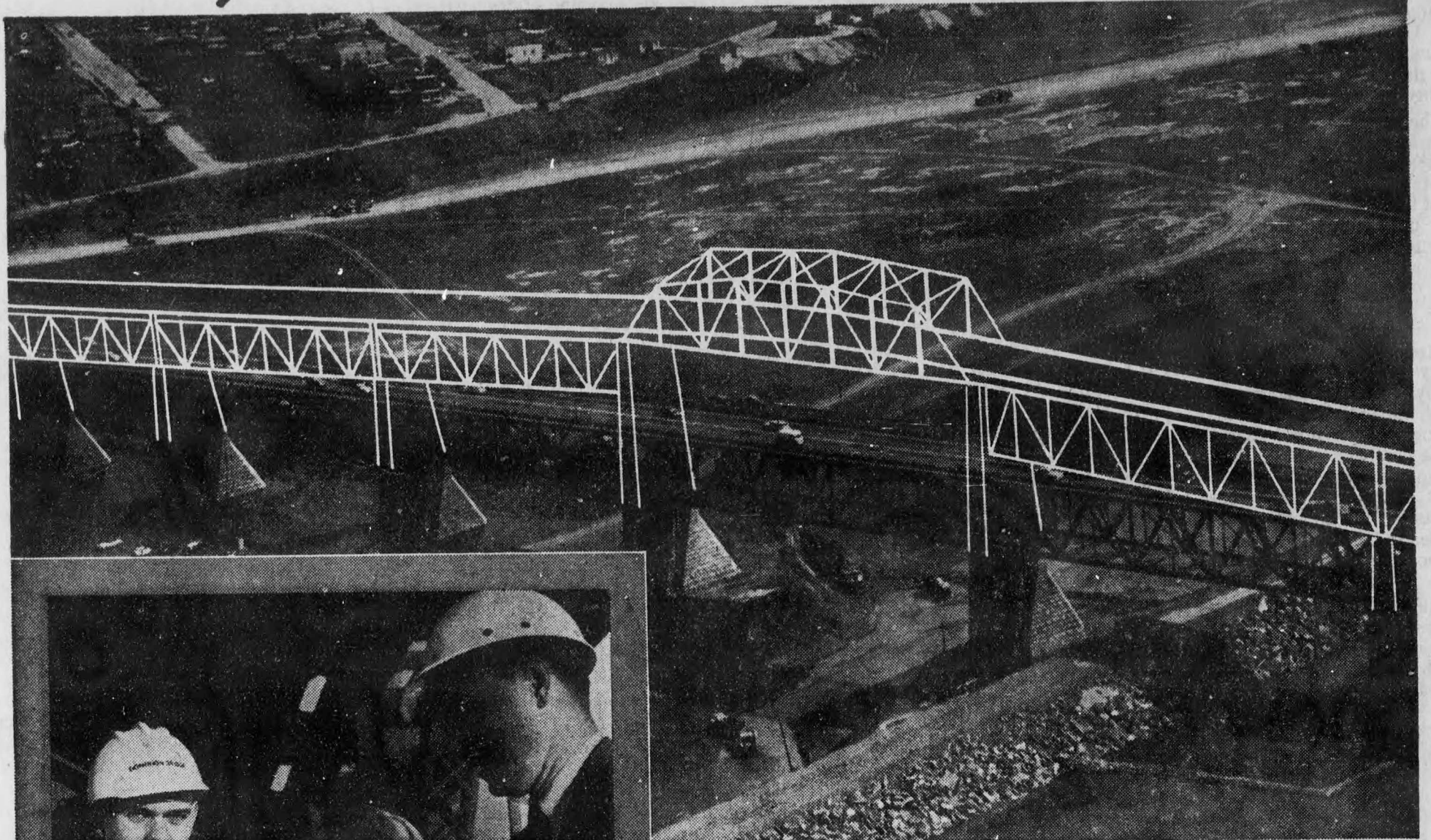


Unique Bridge Raising Project...



Pictured above during a C.B.C. radio interview on site are two Engineers vitally concerned with this project:

Dr. P. L. Pratley, (Centre) well known Consulting Engineer, designed the original structure as well as the raising operation. He spent fourteen years with Dominion Bridge gaining experience before going into private practice in 1920.

Ross Chamberlain, (Left) Project Engineer with Dominion Bridge started with the Company on Summer jobs, where he had experience in the shops, office and on erection work, while studying for his B.Eng. degree at McGill University. He later did post graduate work at the University of Birmingham, (England) and has been with the Company since his return in 1953.

At 27 years old, Ross, working with Senior Officials of the Company, is responsible for the engineering aspects of this great undertaking.

...unique opportunities for Engineers

One of the most spectacular and complicated works required for the St. Lawrence Seaway is now in progress. It is the permanent raising of the southern end of the Jacques Cartier Bridge... the largest operation of its kind ever undertaken *anywhere*.

The purpose is to provide a minimum vertical clearance of 120 feet above high water level in the seaway ship canal. An interesting feature is that uninterrupted traffic must be maintained over the bridge throughout practically all of the construction period.

The work has been entrusted to Dominion Bridge which built the original bridge in 1929. This project typifies the resources and experience of the Company in the field of structural engineering.

Dominion Bridge, an all-Canadian Company, is the foremost fabricator in this country of bridges and steel structures. Less well known is Dominion Bridge's leadership in other engineering fields. Cranes and other handling equipment, hydraulic machinery, boilers for heating and process steam requirements, mining machinery, refinery towers, pulp mill digesters, oil well machinery—these are but a few examples of the diversification of Dominion Bridge operations.

To-day we have the largest and strongest Canadian force of design engineers in our field. Much of their work is of a pioneering nature, and they are constantly being called upon to solve problems connected with large projects in virtually every type of industry. There is a never-ending challenge. This "Unique Bridge Raising Project" is only one fascinating chapter in their story.

Build a Future with Dominion Bridge

There are interesting careers awaiting young civil and mechanical engineers in Dominion Bridge Company Limited. With 15 plants from coast to coast, we are now engaged in the largest expansion programme of our 74-year history.

You are cordially invited to write to Mr. W. Hagen, Manager, Robb Engineering Works Limited, Amherst, N.S., for descriptive booklets or further information on any question you may have in mind. Please mention this publication.

CAMPUS INTERVIEW DATE JAN. 22nd