



This is a sample of the class of hats we are sending out in the West.

A guarantee of the satisfaction that is given by our mail order service is that not a hat was returned to us of the large number sent out last year. Write for our free illustrated catalogue before the issue is exhausted.

ORKIN'S MILLINERY,

259 PORTAGE AVENUE

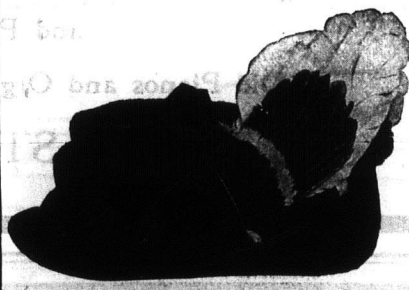
WINNIPEG

Smart Felt Tailored Hat

—trimmed with two toned wings and velvet drape—

\$5.00

Send samples of your Fall Suit to be matched; in black, navy, brown and myrtle.



MISS MONCRIEFF

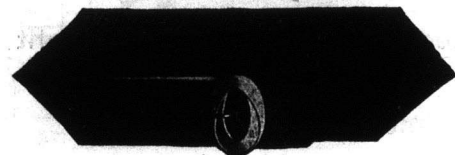
7 WELDON BLOCK, DONALD ST., WINNIPEG



Ladies' Stylish Belt

—made of fine taffeta silk with soutache ornaments and spun silk buttons, in black only.

Sent post paid for. **75c.**



Ladies' Stylish Fancy Mohair Belt

—with gilt, silver or oxydized buckle. In black or colors. Sent post paid for **50c.**



Ladies' Chiffon Collar

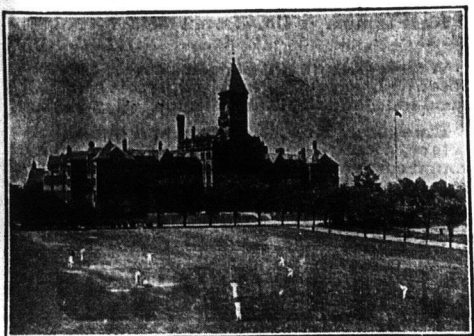
—in handsome applique floral design with rich rouching and gilt ornaments; white only. Sent post paid for. **75c.**

SEND FOR OUR LIST

LADIES' NOVELTIES

BOX 115

WINNIPEG



UPPER CANADA COLLEGE, TORONTO.

Autumn Term begins Tuesday September 14th.

Examinations for Entrance Scholarships Saturday, Sept. 18th.

Courses for University, Royal Military College and Business.

Senior and Preparatory Schools in separate buildings. Every modern equipment. Fifty acres of ground, gymnasium, swimming bath, rinks, etc.

H. W. AUDEN, M.A., (Cambridge) 1812 Principal.

What to Wear and When to Wear it.

Millinery

Interest turns naturally to hats at this season, and as all the openings in the city, both wholesale and retail, are over it is possible to say something really definite about what is to be worn for fall and winter. Speaking broadly,

models are very large. The larger hats all have the long line from front to back and to wear them with anything like good effect the hair must be built out behind.

The new tricorne is much larger than the old style and many of them have quite big crowns. The aeroplane is somewhat along the line of a tricorne. In this particular shape, however, the side brim rolls over the crown, giving the model something the shape of the aeroplane, and the plumes are placed at the back, thus heightening the suggestion of the air ship.



Materials

Moire hats are having a lead for the early fall, especially with the women who can afford to get two or even three hats for the fall season, but with the great majority of the women one hat cover all the needs of both fall and winter wear the the fluffy beavers are the leaders par excellence, and following them the sheared beaver, the felts, and the all-velvet hats.

The beavers are all lighter in weight than when they were worn a few years ago and the felts are lighter also, while in the case of velvet hats there is a very general tendency to mingle lighter fabrics with the velvet and frequently this takes the form of a crown of mechain or chantilly lace in the more expensive hats or tucked or shirred maline in less costly ones. A very good line is a crown of cream or white maline or lace and a brim of black velvet. One striking model showed a crown of black chantilly lace and a brim of cream corded velvet, the decoration being jet ornaments and short black and white plumes.

There is very indication that fur will be worn extensively on hats as the season advances and with the fur lighter fabrics will be very much used, not only to reduce the weight but for the effect of sharp contrast. Silver and gold tissues, and gold and silver with black, and all the shades of purple and violet will be greatly used with fur as well as lace and maline.

the millinery is much more attractive this fall season than it was last. The lines are more graceful, there are not such heavy masses of decoration and the colors are very beautiful.

Shapes

Hussar and high Oriental turbans. Cavalier and

Gansborough, tricorne and aeroplane hats, or more properly speaking, shapes based on these general lines are very much in evidence, though there are possibly a score of others that have more or less vogue. The name of the turbans suggests the lines that may be looked for, and all

Colors.

The present is one of the strongest color seasons for many years. Among the many shades in favor are the dull wine colors to be known as Vendange; the softer shades of violet and amethyst are superseding the dark purples and are called Passi Flori; the rich copper tints are all known as Cythare; old rose and ashes of roses shades, which are very popular, are called Chanteceller; soft greenish greys have the fancy but non-suggestive name of aeroplane; rhubarb and spinach and cosaque, a shade darker than hunting, are the greens most in favor; lapsis, a shade between Prussian and navy, is a blue much loved of Parisian women and one that will find favor in the eyes of men. It is rather a striking blue but the color is rich and seems almost iridescent in the sun; renocule is a peculiarly rich copper brown. All the tan, mustard, khaki and gold shades are used, and black and black and white combinations were never more popular.

