

st., e., Bernard to Dupont, Crescent Constructing & Paving Co., 61c.; Front street, s., Lorne street to point 311 ft. w., A. Chamberlain, 73½c.; Dovercourt road, w., McKenzie crescent to Dundas street, W. R. Payne, \$1.14.

**MONTREAL, QUE.**—R.M. Rodden, architect, has awarded contracts for house for John Robinson, Westmount, as follows: Carpenter work, D. McLennan; plumbing, Blackburn Bros.—W. E. Doran, architect, has awarded contract for offices, stables and warehouse for Quintal & Lymb, corner McGill and Youville streets, to Senecal & Jacob, contractors—H. C. Stone, architect, has let the contract for alterations to building for Barron Estate, corner St. Peter and St. Sacramento streets, to U. Pauze & Son.—Robert Findlay, architect, has awarded contracts as follows for residence on Drummond street for A. A. Wilson: Masonry, J. H. Hutchison; brickwork, Amos Cowan; carpentry, Geo. Roberts; plumbing and heating, Ballantyne & Co.; plastering, John McLean; painting and glazing, W. P. Scott; electric wiring, Edwin C. Lewis Co. Same architect has awarded the contract for alterations to residence in Westmount for Thos. Reid, to Wm. Sawn.

#### MASONRY FOR RAILWAY BRIDGES.

The following suggestions for specifications of masonry have been prepared by a committee of experts for the American Engineering and Maintenance of Way Association:

All stones used for masonry shall be sound, durable, well seasoned from sources approved by the engineer, and shall be laid on their natural beds.

Mortar for laying up stone masonry, unless otherwise expressly stated, shall consist as follows:—Either one part by volume measured loose of approved Portland cement to three parts of good, sharp

#### DEBENTURES

Municipalities contemplating the issue of Debentures will find it to their advantage to communicate with

**G. A. STIMSON & CO.**  
Investment Dealers

24 and 26 King St. W. TORONTO

## JOSSON CEMENT ..Manufactured at.. NIEL ON RUPELL

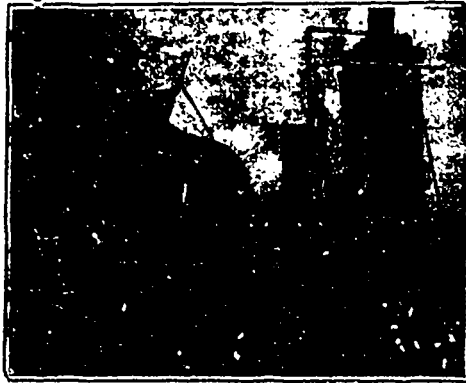
Is the Highest Grade Artificial Portland Cement and the Best for High Class Work. Has been used largely for Government and Municipal Works.  
TO BE HAD FROM ALL CANADIAN DEALERS

**C. I. de Sola, Manager in Canada :: 180 St. James Street, MONTREAL**

SMITH  
CONICAL  
CONCRETE  
MIXER

— 11 —

Different  
Sizes and  
Styles.



Mixes in Batches. Discharges by Tilting while Running. Mounted on Skids or Trucks.

Catalogue on Application.

— SOLE CANADIAN AGENTS —

**W. H. C. Mussen & Co., 763 Craig St., MONTREAL**

CANADIAN  
CONTRACTORS'  
HAND-BOOK

and  
Estimator.

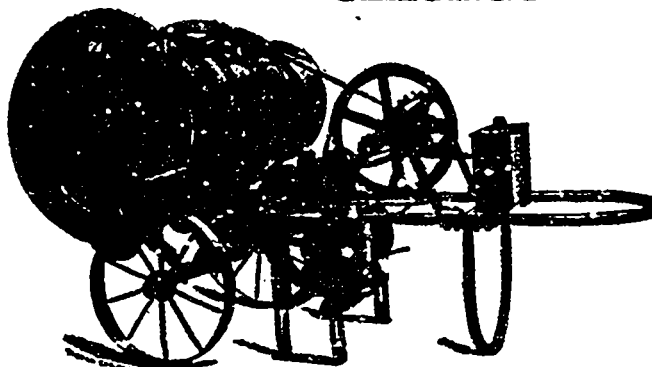
Third Edition

Price \$1.50; to subscribers of the Canadian Architect and Builder, \$1.00.

SEND FOR A COPY

G. H. Mortimer  
Publishing Co.  
Toronto.

## McKelvey Concrete Machinery Co. CHICAGO



Manufacturers of the  
**McKelvey  
Concrete  
Mixers.**

Steam and hand power.

Mixes continuously no delays by mixing in batches.

**W. A. McKelvey,**  
Manager Canadian  
Branch,  
207 McKinnon  
Bldg., Toronto.

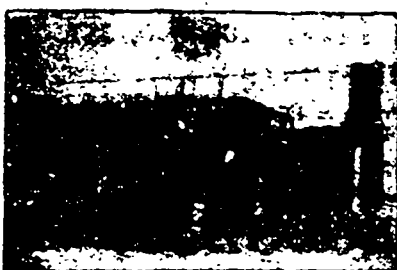
## The Canadian Bridge Co., Limited WALKERVILLE, ONT.

MANUFACTURERS OF

## RAILWAY AND HIGHWAY BRIDGES

Locomotive Turn Tables,  
Roofs, Steel Buildings and  
Structural Iron Work of all descriptions.

## PERFECTION STEEL-CLAD AND BRICK SET INCINERATORS



MANUFACTURED BY **Toronto Furnance & Crematory Co., LIMITED**

14 and 16 Queen St. East, TORONTO, CANADA.

Exports to Canada for disposal of dangerous wastes.

**Garbage, Refuse, Night Soil, Dead Animals.**

For Cities, Towns, Hospitals, Hotels, Abattoirs, etc.

The plants embody the newest features of modern practice and are constructed to meet the requirements of the smallest towns and the largest cities, capacities ranging from 4 to 100 tons daily. Correspondence invited.