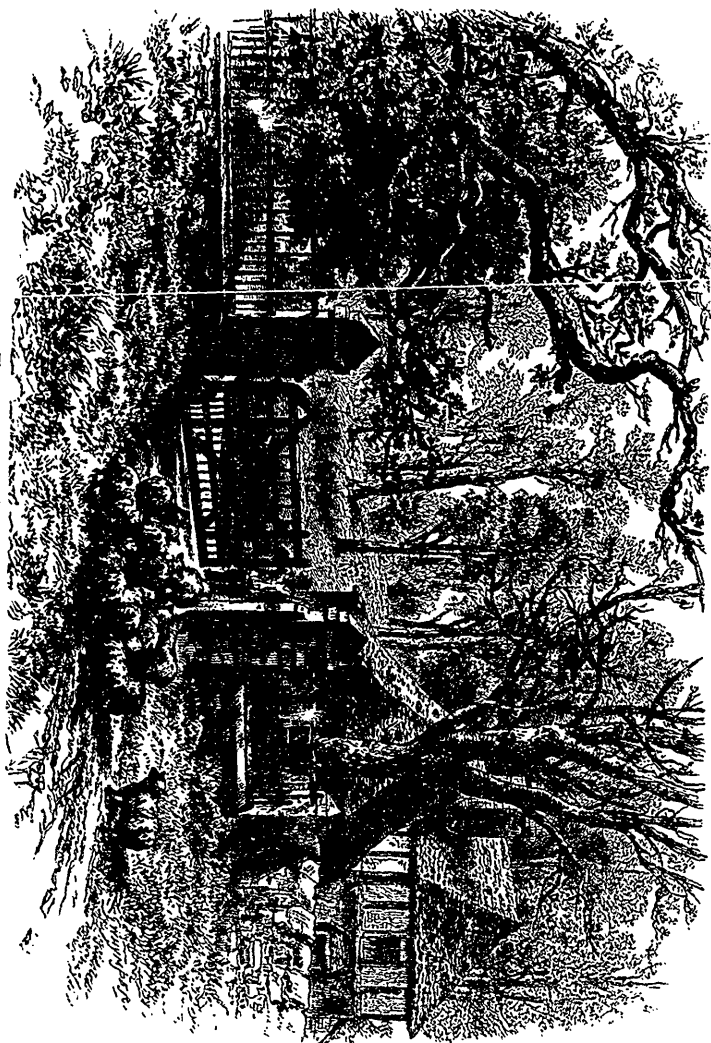


were shaped and fashioned. And here is Mrs. Gladstone's table; here she probably planned her Orphanage, and the hospital she first called into existence. This is the room where the scholar

ENTRANCE TO FARM AT HAWARDEN.



and the statesman spends the chief portion of his time; there is the theological portion of the library—an ample collection; separate compartments receive the works of Homer and Shakespeare and Dante, and the busts of Canning and Cobden and