

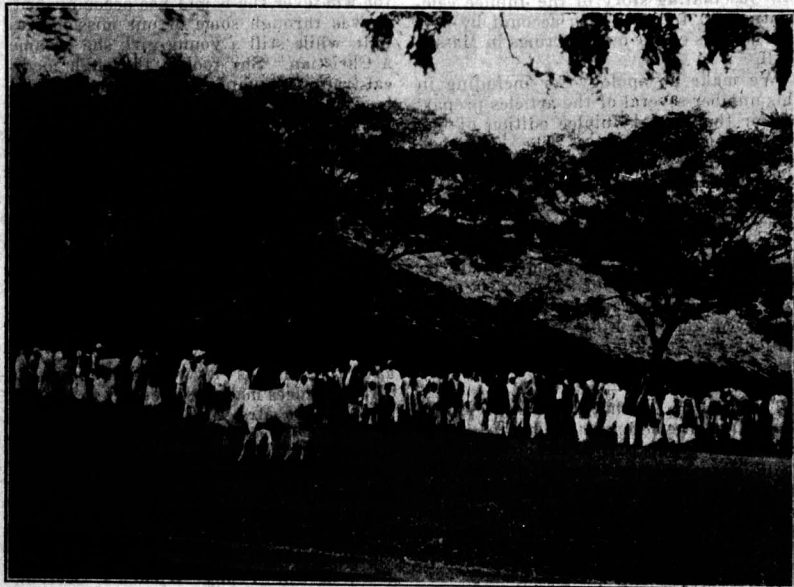
Jubilee Continued

# Canadian Missionary Link

XLVI

WHITBY, MAY, 1924

No. 9



You have read of the Jubilee meetings in Cocanada being held in a "Pandal" erected specially for the purpose. The photograph shows the way in which it was built—no walls, just posts to support the thick roof of palmyra palm leaves which protected the audience from the sun's burning rays. Notice how one tree comes right through the roof! The seating capacity is about 1000.—E. C. D.