

THE NORTHERN Navigation Comp'y

OF ONTARIO, LIMITED

30,000 Islands of Georgian Bay
Sault Ste. Marie and Lake Superior

*Most Direct Route to North-West
Summer Service and Equipment*

¶ In June this year The Northern Navigation Company will place in commission the new steamer "HAMONIC." She is the largest, fastest, finest passenger and freight steamer ever built for Lake Superior trade. This will give a tri-weekly service for Sault Ste. Marie and Lake Superior ports, steamers leaving Sarnia Mondays, Wednesdays and Saturdays.

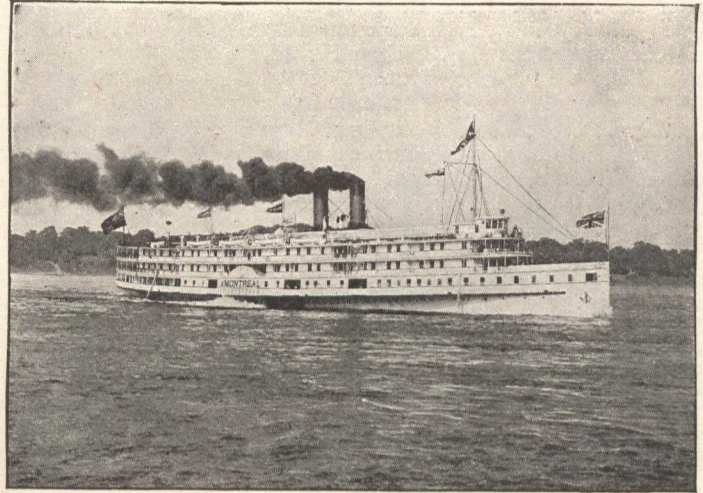
¶ **For Georgian Bay Ports, Sault and Mackinac**—Steamers leave Collingwood and Owen Sound Tuesdays, Thursdays, Fridays and Saturdays. Tuesday and Friday steamers call at Sault Ste. Marie east-bound only.

¶ **For Parry Sound and Point au Baril**—Another addition to the already magnificent fleet will be the new, fine, steel, twin-screw steamer "WAUBIC," which will be launched and commissioned in June. This steamer will leave Penetang and Midland daily (except Sunday) on arrival of trains, going through the 80,000 Islands to Parry Sound and Point au Baril, giving a service much superior to anything heretofore.

¶ *Tickets from All Railway Agents.* For Spring sailings and other information address C. H. NICHOLSON, Traffic Manager, Sarnia, Ontario.

VACATION SUGGESTIONS

"The River
St. Lawrence
Trip"



New observation steamers "Rapids King" and "Rapids Queen" in service this season

Lake Ontario

1000 Islands

Rapids
St. Lawrence

Montreal

Quebec

and the
Far Famed

Saguenay River

The Scenic Route

Richelieu & Ontario Navigation Company

For illustrated booklet "Niagara to the Sea" send 6c in postage to

H. Foster Chaffee or Thos. Henry
A.G.P.A., Toronto, Can. Traffic Mgr., Montreal, Can.



SUMMER TOURS



The Canadian Pacific Railway provides unequalled service to all the most attractive summer resorts of the Dominion, by seashore, mountain, lake or stream. Tracks extend from the Atlantic to the Pacific, with numerous branches to popular summering places. The finest fishing, camping and canoeing country in Canada is reached by the C. P. R.

LOW SUMMER RATES FROM TORONTO TO

LAKE MASSANOGA
MONTREAL QUEBEC
LOWER ST. LAWRENCE
SAGUENAY RIVER
MARITIME PROVINCES
ST. ANDREWS-BY-THE-SEA
ATLANTIC COAST RESORTS
NEW ENGLAND
NEWFOUNDLAND

MUSKOKA LAKES
Express trains to Bala, in the heart of the Lakes, and from there steamer service for all resorts.
GEORGIAN BAY
PARRY SOUND 30,000 ISLANDS
POINT AU BARIL
PICKEREL AND FRENCH RIVERS
Most attractive fishing and camping country in Ontario

GREAT UPPER LAKES
SAULT STE. MARIE
and beyond
WESTERN PRAIRIES
ROCKY MOUNTAINS
PACIFIC COAST
Alaska - Yukon - Pacific Exposition
at SEATTLE
ALASKA

This summer the Pacific Coast Tour is especially attractive and rates are exceptionally low—only \$74.10 Toronto to Seattle and return—May 20 to Sept. 30.

Write for illustrated descriptive literature, rates, routes and any information desired.

WM. STITT
General Passenger Agent, Montreal

R. L. THOMPSON
District Passenger Agent, Toronto