

**T. McAVITY & SONS, LTD.**

MANUFACTURERS OF  
**BRASS AND IRON  
VALVES**  
AND STEAM GOODS  
OF EVERY  
DESCRIPTION.



**DIAPHRAGM  
PUMPS.**

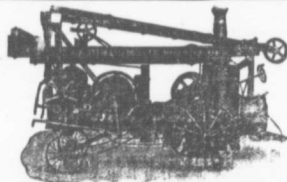
**IRON PIPE FITTINGS.**



BORERED AND FLANGED FOR PIPE FROM 1-4 TO 12 IN.

**WROUGHT IRON PIPE**  
PLAIN AND GALVANIZED. ALL SIZES IN STOCK.  
CATALOGUE AND PRICES ON REQUEST.

**T. McAVITY & SONS, LTD.**  
ST. JOHN, N. B.



**The KEYSTONE**  
Percussion Core Drill Attachment  
is an economical appliance for  
**TESTING COAL LANDS.**

It can be used in connection with any good "churn" drill, but operates best on the long-stroke KEYSTONE, thus making the cheapest and quickest method of boring to be found.  
In operation a hole is sunk to the coal with the ordinary Rock Bit. The Bit and Stem are then removed and the Coring Attachment put on in their place. It takes a 4 ft. core out of the Softest as well as the Hardest part of the vein. Avoids all delay and expense of "rule" water wash, diamonds, shot, and heavy operating mechanism.

Price of Complete Attachment  
**\$200.00**

Catalog No. 2 B. is a book on the subject.  
We make Water, Oil & Test Well Drillers  
for all depths and purposes.  
**Keystone Driller Co. Beaver Falls, Pa.**

**Mining & Mill Supplies.**

Valves,  
Fittings,  
Packing,

Steam Goods  
—of every—  
Description.



Boiler  
Tubes,  
Steel  
Plates,  
Angles,  
Tees, etc.  
SOLID DIE  
RIVETS.

**Iron Pipe for**

**Mining Purposes.**

—Catalogues and Prices on Application.—

**THOMAS ROBERTSON & CO.,**  
—LIMITED,—  
**MONTREAL, QUE.**  
—Established 1852—

**Jeanesville Pumps**



For MINES, WATER WORKS, SEWAGE,  
ETC., ETC.

A Reliable, Efficient, and Substantial,  
celebrated Fifty Years Experience  
Stands back of Every Machine. Following types for any capacity, any head:  
DIRECT ACTING and CRANK and FLY-WHEEL.  
CENTRIFUGAL PUMPS, VOLUTE or TURBINE.  
Steam or Electrically Driven  
**Jeanesville Iron Works Co.,**  
HAZLETON, PA., U. S. A.