

High temperature furnaces are now in use in the principal countries of Europe. Plants of British design are installed and in successful operation in Australia, New Zealand, South Africa, Strait Settlements, Egypt, France, Russia, Holland, Belgium, United States, South America. Within the last three months the city of St. Petersburg has decided on the installation of a large plant of the Heenan type, this being the first of six which are to be installed in that city.

This continent is woefully behind in this respect. There are admittedly a very large proportion of failures recorded in plants erected in North America, principally for the reason of incorrect design and consequent inability to maintain, or even reach, the requisite high temperature. So far as our present information goes the following are the only high temperature plants existing or in course of erection in the United States or Canada:

Year.	Place.	Type.	Purposes for which Steam is Used.	Make.	Capacity.
1906	Westmount, No. 1	Continuous Grate.....	Generating electricity.	Meldrum	50 tons.
1906	Vancouver	Continuous Grate.....	Generating electricity and heating.	Heenan.	50 tons.
1907	Borough of Richmond, N. Y.	Continuous Grate.....	Operating clinker plant.	Heenan	50 tons.
1907	Seattle	Continuous Grate.....	Various municipal purposes.	Meldrum	50 tons.
1909	Westmount, No. 2	Continuous Grate.....	Generating electricity.	Heenan	50 tons.
1909	Buffalo	Continuous Grate.....	Sewage pumping.	Heenan	60 tons.
1909	Milwaukee	Continuous Grate.....	Sewage pumping.	Heenan	350 tons.
1910	Montgomery, Fla.	Continuous Grate.....	Municipal purposes.	Heenan	50 tons.

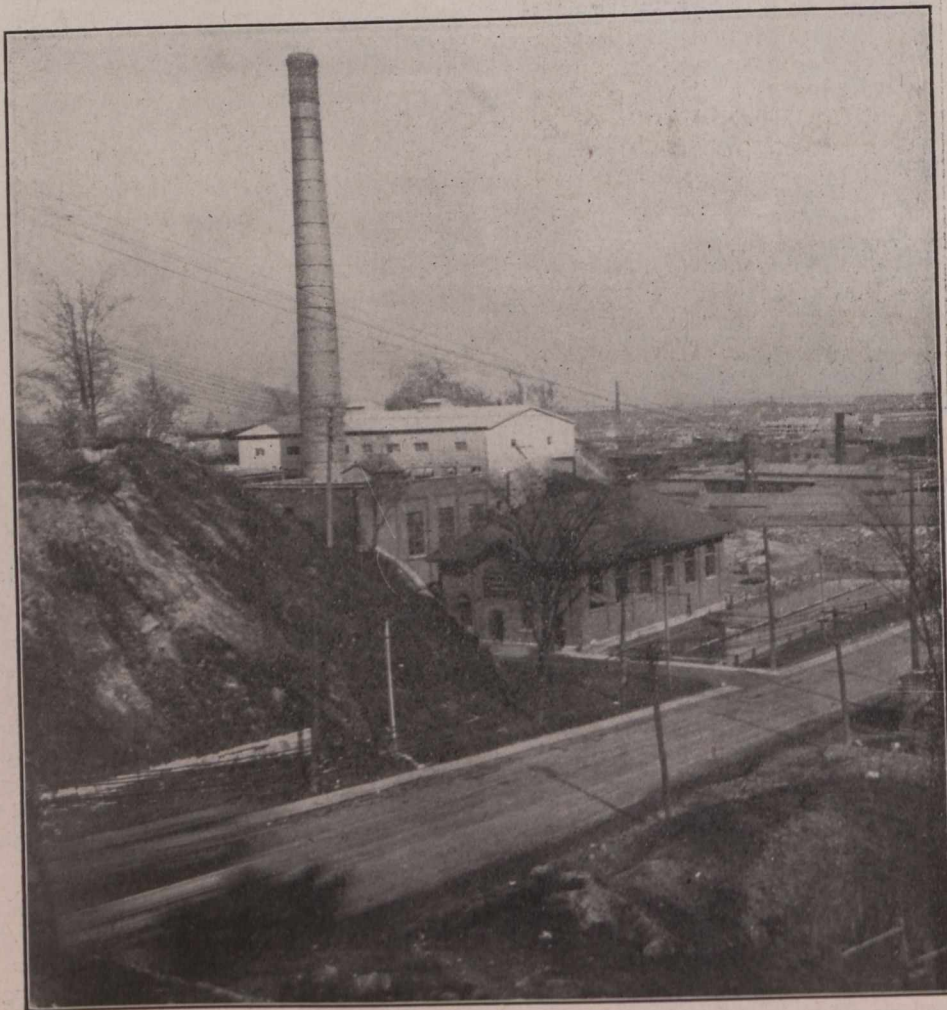
We hope to supplement this later with more complete information of the methods actually in use in a large number of Canadian towns and cities from whom this information is being obtained.

In order to give a definite and detailed description of the process of incineration in a continuous grate, high temperature destructor installed by the city of Westmount, as this plant is typical of the most recent British engineering practice in the destruction of refuse. The Westmount plant had its inception in the year 1904, when the problem of devising means of disposing of their refuse had to be faced. Messrs. Ross & Holgate, acting as consulting engineers to the city of Westmount, in a report submitted that:

(1) The garbage question has become acute in your town, as no dumping space can be provided within your own boundaries or those of neighboring municipalities.

(2) It is recognized in view of the above that the city

garbage will have to be burned so as to effectually destroy its noxious qualities.



General View Westmount Destructor Plant and Power House.