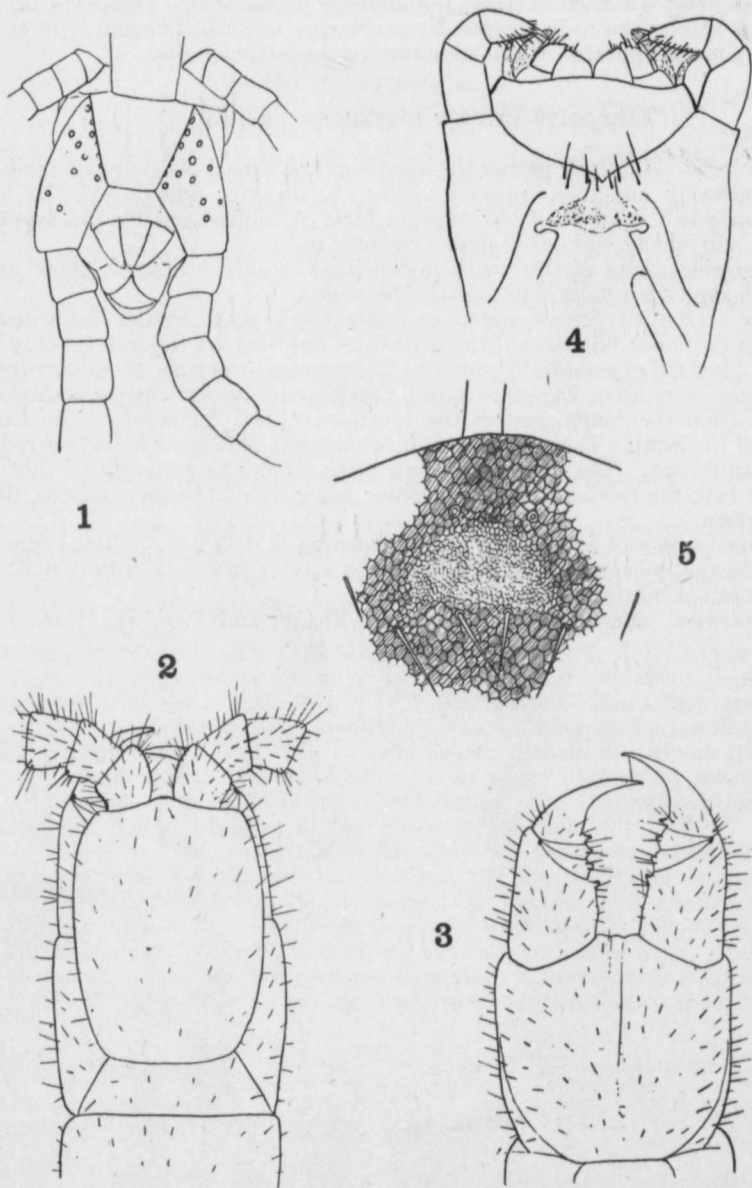


Chilopoda collected by the Canadian Arctic Expedition, 1913-18.



EXPLANATION OF PLATE IV.

- Fig. 1. *Cryophilus alaskanus* Chamberlin, ventral view of caudal end.
 2. *Cryophilus alaskanus* Chamberlin, dorsal view of head and prehensors.
 3. *Cryophilus alaskanus* Chamberlin, ventral view of prehensors.
 4. *Cryophilus alaskanus* Chamberlin, maxillae.
 5. *Cryophilus alaskanus* Chamberlin, clypeal area.