

## Printing Charts

You print a chart in the same way that you would print any other Quattro Pro sheet or object. If you created the chart on a separate sheet, simply click the Print button on the Toolbar. Quattro Pro's default sets the page to print with the chart using the full page. If you created the chart on a sheet with data, you need to select the chart before choosing Print from the File menu, which opens the Chart Print dialog box, shown in Figure 9-10.

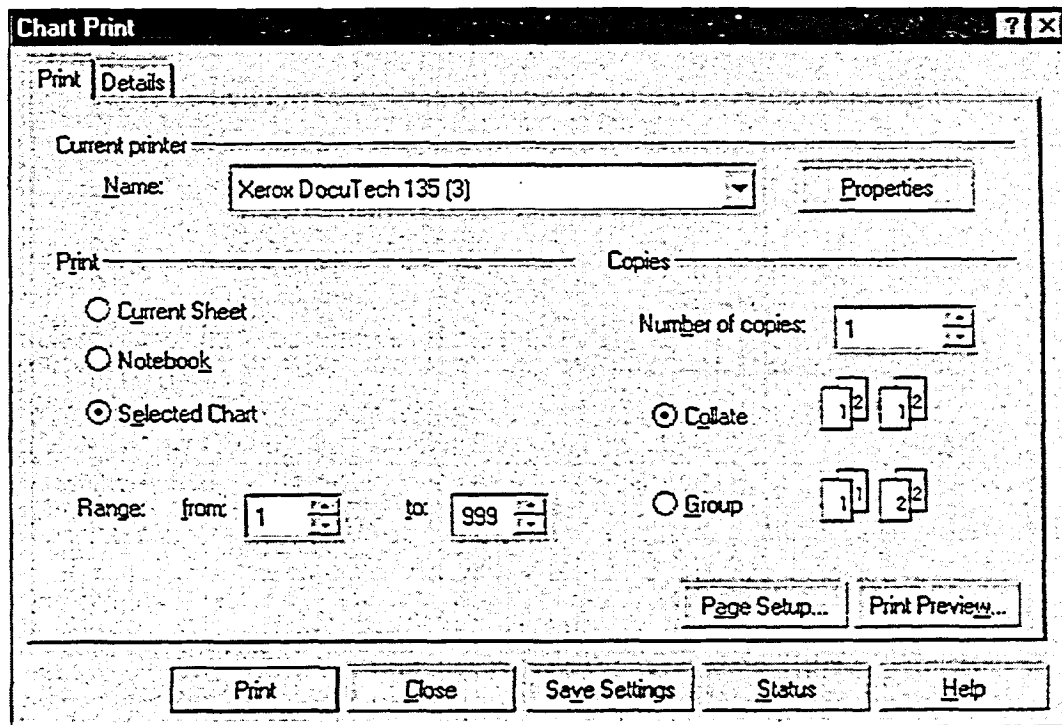


Figure 9-10: The Print Page of the Chart Print Dialog Box

You can use the page setup options, shown in Figure 9-11, to make page setup changes specific to your chart. The options in the Chart Print dialog box let you print a floating chart alone on a sheet of paper. If you need to print the sheet data with the floating chart, simply use normal sheet printing methods. To print multiple charts, go to the Objects sheet, select each chart's icon, and choose Print from the File menu. The charts print in the order in which they were selected.