

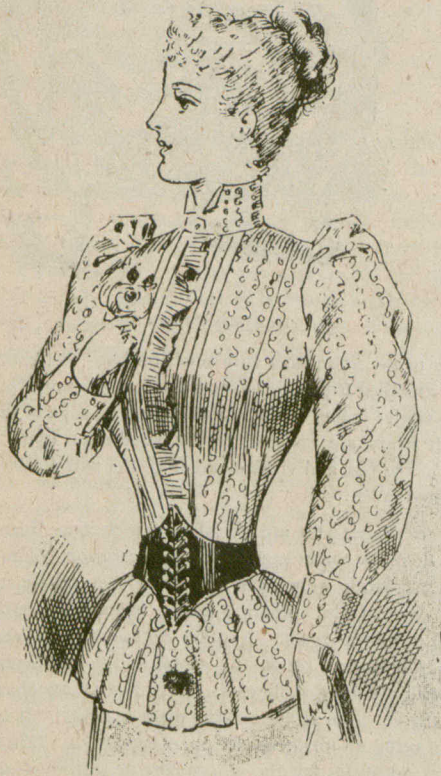
Fashions.

"What we really want is advice."—RUDYARD KIPLING.

Address letters relating to this department to Editor "Fashions" Ladies' Pictorial Weekly, etc.

Smart Costumes at the Races.

Our artist has sketched several of the prettiest costumes worn at the races. We have reproduced some of these this week and



SUMMER BLOUSES.

shall give the remaining ones in next week's issue. On our front page will be found Mrs. Austin Smith's costume, principally of green faille francais, with white brocaded silk sleeves, train and part of bodice; the lower part of the sleeves, the waist and the edge of skirt and train, being enriched by a silver and crystal ap-



FROCK FOR LITTLE GIRLS.

plique. The hat worn with this was trimmed with pink ribbon and Irish point lace and roses, and set off a very stylish and taking costume. Mrs. Arthur Croil's dress is sketched on this page. The prevailing color pale grey with full sleeves and falling gracefully over the shoulders several folds of Irish lace, which is made use of also for the cuffs, the effect of the whole being heightened by the dainty straps and bows of white ribbon across the bodice and on the lower portion of the sleeves. The other costume sketched on this page is that worn by Mrs. Carruthers. It was made throughout in Whipcord cloth and has straps of tan leather and buckles in place of buttons on the front of the dress. The idea is an entirely novel one. Taking the sketches on page 345 in the order in which they come; the first was in Bedford cord with moire silk trimmings and passementerie and was noticeable, for the pleasing novelty in the cut. The next two sketches give the back and front view of the same dress, that worn by Mrs. Matthieson. It was in wool Bengaline, the bodice and lower part of the sleeves being trimmed with guipure Irish lace, which material was also used on the skirt and three festoons of it falling gracefully on the front of the dress. Two bows of shot moire, one on each breast gave additional richness to the appearance of this costume. The next dress was made in camel's hair cloth, the bodice being made up in this and



DRESS OF FANCY SILK, PRINCESS STYLE, TRIMMED WITH RIBBONS AND LACE.

and brown velvet, with a pink silk front. The last two costumes are both evidently tailor-made. The first, worn by Mrs. Melfort Boulton, was in white serge, the braiding throughout being white to match, and had an effect which only good tailor-made gowns can have. The remaining dress was worn by Mrs. E. W. Cox, and is in pale striped worsted, shot with gold in the stripes, the material, which we are unable to reproduce clearly, forming in combination with a stylish cut, a very effective costume.

New Styles in Tailor-Made Costumes.

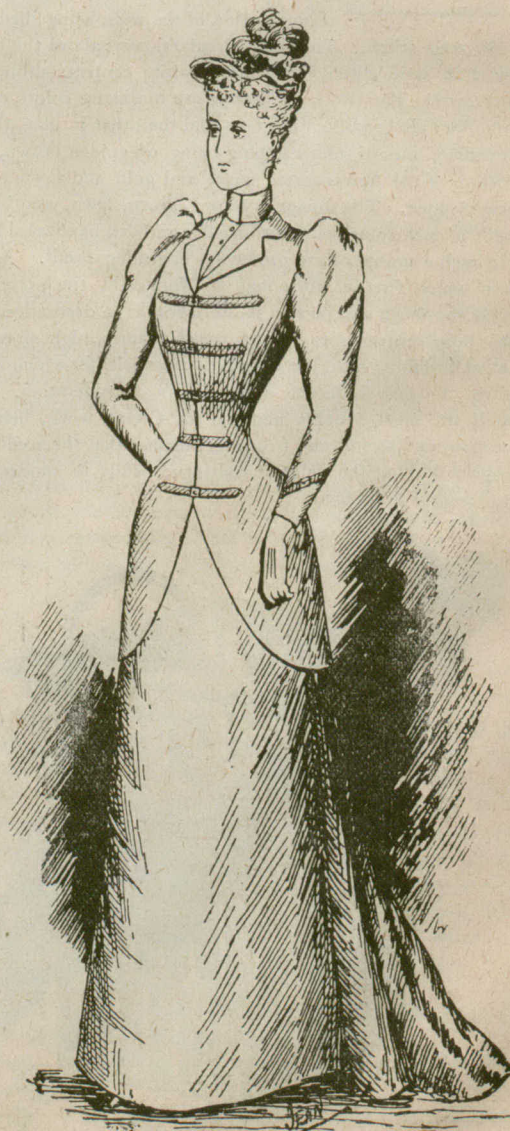
Although strictly tailor-made dresses must of necessity be somewhat plain and unadorned as compared with other costumes, they still more than hold their own in the fashionable world this season. A great tendency among many ladies' tailors, however, is shown this year, and they are putting greater variety in the cut and adornment of the dresses than heretofore. One of the latest novelties in these costumes is that going by the name of "Eton," the idea being derived from the well-known Eton jacket as worn by the youths of that great English public school. It has many variations in the waistcoat, but if anything we prefer that which most closely resembles the Eton boys' waistcoat and which is certainly more in keeping with the coat than many of the other styles. We saw more

than one of these dresses at the races and our artist has sketched one, which is however, unavoidably held over till next week. Another novelty is the one sketched on this page. This is made



MRS. ARTHUR CROIL'S COSTUME.

by Messrs. Stovel & Co., and is an original idea of their own. May we got more ideas of the same description from some of our energetic Toronto houses.



MRS. CARRUTHERS' COSTUME.