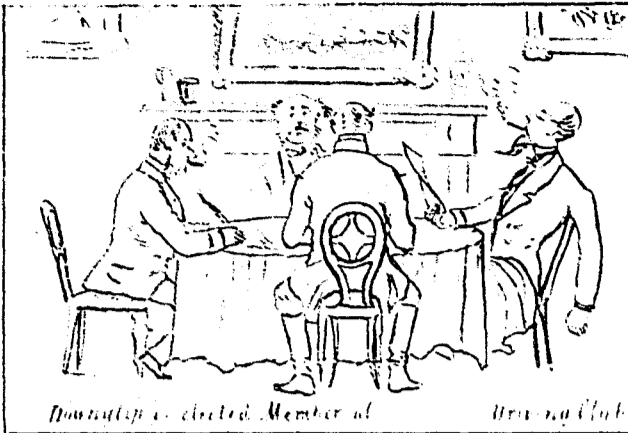


Young Downytip's first visit to Canada.—His Tandem Experience.

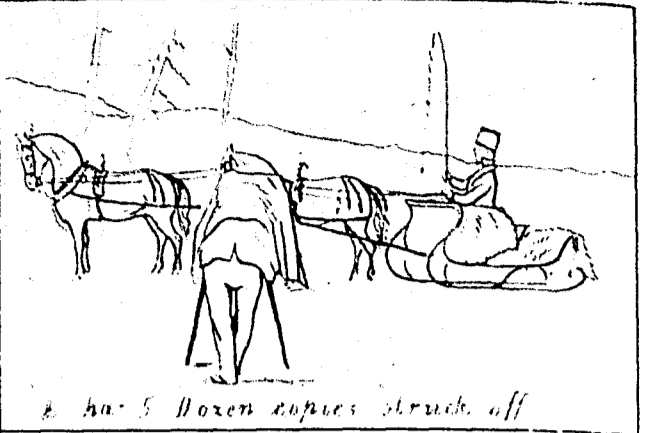
By W. O. C.



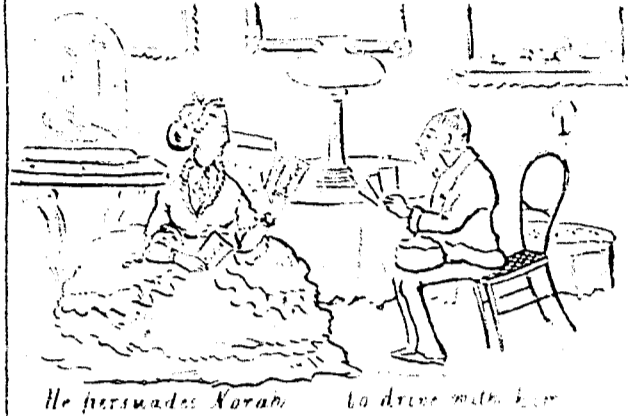
Downytip elected Member of the Hall



He looks after a sleigh & a pair of horses



It has 5 dozen copies struck off



He persuades Korah to drive with him



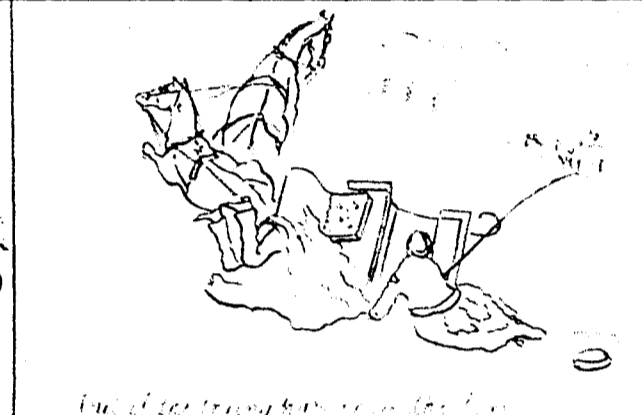
The Start



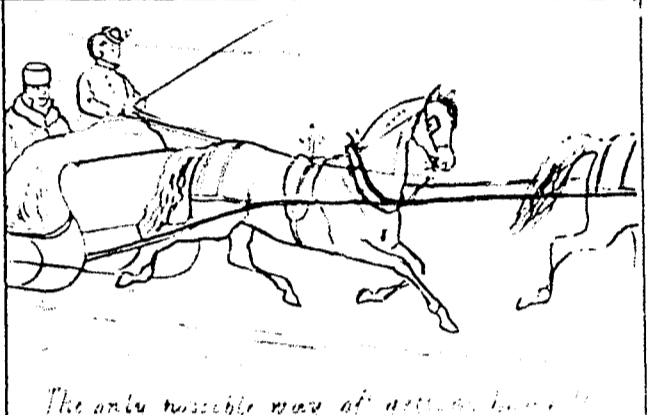
It looks very well in the distance



On the road towards Montreal in a very comfortable



One of the many views of the road



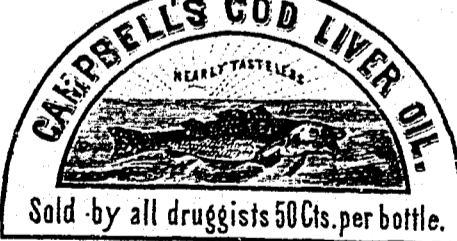
The only possible way of getting home



THIS CELEBRATED CONDIMENT is composed of health-giving seeds, herbs and roots. Its great success and unlimited demand has proved its efficacy. By using it 30 per cent. is saved in the cost of feeding, and the Cattle are in better condition.

It converts coarse grain and chopped hay into rich aromatic provender. It costs only one cent per feed. It is used in the "Royal Stables and Model farms. All the principal Prize Cattle at the Agricultural Hall, Islington, London, Xmas, '68, '69, and '70, were fed on the NUTRITIOUS CONDIMENT. Several Testimonials have been received from some of the most valuable horse owners in Montreal, and may be had on application. Manufactured by the North British Cattle Food Co., at London and Glasgow. Branch Depot in Montreal at 451, Commissioners Street; Toronto, 5, Palace Street and 22 St. Peter Street, Quebec. From either of these Depots, 200 feeds as sample will be sent, carriage paid, to any part of Canada for \$3.00. 5-21

AGENTS WANTED, Male and Female, for new and useful inventions. Enclose stamp to Montreal Manufacturing Company Box 6271. 4-82 MONTREAL P. Q.



CAMPBELL'S COD LIVER OIL. NEARLY TASTELESS. Sold by all druggists 50 Cts. per bottle.

1851. Honorable EXHIBITIONS. Mention 1862. FOR GOOD AND CHEAP INSTRUMENTS. **C. H. CHADBURN & SON.** OPTICIANS and MATHEMATICAL INSTRUMENT MAKERS. To H. R. H. the late PRINCE CONSORT, & 73, LORD STREET, LIVERPOOL.

C. H. C. & SON beg respectfully to invite those visiting Liverpool to favour them with an inspection of their Show-room, which contains the Largest Stock of Optical, Mathematical and Philosophical Instruments in England, all of the best manufacture, with the most recent improvements, and at the lowest possible prices. Spectacles, Telescopes, Opera and Field Glasses, Microscopes, Lanterns, Pocket Barometers with mountain scales, Models of every description, &c. 4-15 tf



JOSEPH GILLOTT'S STEEL PENS. Sold by all Dealers throughout the World. 4-15tf

CANADA CENTRAL AND BROCKVILLE & OTTAWA RAILWAYS.

GREAT BROAD GAUGE ROUTE TO OTTAWA.

ON AND AFTER MONDAY, OCT. 30, 1871.

TRAINS WILL RUN AS FOLLOWS:—

LEAVE BROCKVILLE.

EXPRESS at 7:30 A.M., arriving at Ottawa at 12:50 P.M., and at Sand Point at 1:30 P.M., connecting at Sand Point with Union Forwarding Company's Steamers.

LOCAL TRAIN at 1:40 P.M.

THROUGH OTTAWA EXPRESS at 3:25 P.M., connecting with Grand Trunk Day Express from the East and West, and arriving at Ottawa at 7:25 P.M., and at Sand Point at 8:15 P.M.

LEAVE OTTAWA.

THROUGH WESTERN EXPRESS at 10:00 A.M., arriving at Brockville at 1:50 P.M., and connecting with Grand Trunk Day Express going East and West.

MAIL TRAIN at 4:35 P.M.

ARRIVE AT SAND POINT at 1:30 P.M., 7:35 P.M., and 8:15 P.M.

LEAVE SAND POINT at 5:30 A.M., 9:10 A.M., and 3:45 P.M.

Trains on Canada Central and Perth Branch make certain connections with all Trains on B. and O. Railway.

Certain connections made with Grand Trunk trains, Mail Line, and Union Forwarding Company's Steamers.

MORNING EXPRESS leaves Sand Point at 10 A.M., after arrival of Steamer from Pembroke, Portage du Fort, &c.

Freight loaded with despatch. The B. & O. & C. C. Railway being of the same gauge as the Grand Trunk, car-loads will go through on Grand Trunk cars without transhipment.

H. ABBOTT, Manager. 4-15 tf

Brockville, 26th Sept., 1871.

MRS. GUISKELLY, Head Midwife of the City of Montreal, licensed by the College of Physicians and Surgeons of Lower Canada. Has been in practice over fifteen years; can be consulted at all hours.

References are kindly permitted to George W. Campbell, Esq., Professor and Dean of McGill College University; Wm. Sutherland, Esq., M.D., Professor, &c., McGill College University.

Mrs. G. is always prepared to receive ladies where their wants will be tenderly cared for, and the best of Medical aid given.

All transactions strictly private.

RESIDENCE:—No. 315 St. LAWRENCE MAIN STREET. 4-722

"BEST IN USE."

THE COOK'S FRIEND

BAKING POWDER

IS THE ORIGINAL AND GENUINE. IT NEVER DISAPPOINTS. FOR SALE BY ALL GROCERS. 3-15H

GENTLEMEN WILL FIND A FIRST-CLASS STOCK AT S. GOLTMAN AND CO'S, 132, ST. JAMES STREET.

N. B.—A large assortment of Silk-Lined Spring Overcoats in all Shades always on hand. 26

1,000 NEWSPAPERS RECOMMEND THE **WAVERLEY, OWL, PICKWICK, AND PHAETON PENS.**

For their names see GRAPHIC, 16th September, 1871.

They come as a boon and a blessing to men. The Pickwick, the Owl, and the Waverley Pen."

Oxford University Herald says:—"These pens have been aptly termed by a contemporary the 'WONDER OF THE AGE.'"

The Standard says:—"The Waverley is a treasure."

Somerset County Gazette says:—"These pens are a luxury for the million."

The Sun says:—"The Phaeton pens create both wonder and delight."

SOLD EVERYWHERE, 1s. PER BOX.

BEWARE OF SPURIOUS IMITATIONS. SHIPPERS SUPPLIED by the PATENTERS, MACNIVEN & CAMERON, 23 to 33, Blair Street, Edinburgh. 5-4 tf

LASH & COMPANY, successors to J. G. JOSEPH & Co.'s Retail Business, KING STREET, TORONTO. 3-2222

GRAY'S Syrup of Red Spruce Gum.

Prepared from Canadian Red Spruce Gum.

BALSAMIC, SOOTHING, EXPECTORANT, ANTISPASMODIC AND TONIC. (Delicious Flavor.)

A sovereign remedy for Coughs, Colds, Hoarseness, and Throat affections generally. For sale at all Druggists. 25 Cents per bottle. Sole manufacturer, HENRY R. GRAY, Chemist. 5-41 MONTREAL.

THE Canadian Illustrated News PORTFOLIO, (FOR 1872.)

Which is about to be largely circulated both on the American Continent and in Great Britain, will contain an **ILLUSTRATED DOMINION GUIDE** Descriptive of Canada, its Cities, Public Works, and Scenery, its Industries, Resources, and Commerce, and also a **GUIDE to the Principal Cities, Watering-Places, and Tourists' Resorts of Great Britain**, together with the Weekly Current Numbers of the **CANADIAN ILLUSTRATED NEWS.**

This **PORTFOLIO**, of substantial and elegant character, will be placed before the Subscribers to that Periodical on the American Continent, in the Reading-Rooms of Hotels in the Principal Cities of America, Canada, and Great Britain; on the Pullman's Drawing-Room Railway Cars, and the Steamboats throughout the Dominion of Canada.

It will also be placed in the Saloons of the Ocean Steamers on the Allan Line, the Cunard Line, the Inman Line, the White Star Line, the Guion Line, and the Anchor Line running to Liverpool and Glasgow, and will be found at the Principal Hotels, Watering-Places, and Public Libraries of Great Britain.

Each page will be divided lengthwise into three sections, the central one being occupied by the **DESCRIPTIVE AND ILLUSTRATED GUIDE**, and the sides arranged in square of Ten Superficial inches for Advertisements. The charge for each square will be \$25 for one year, payable on demand after publication of the Work.

Advertisers will secure a large amount of publicity, as each advertisement will be kept before the eyes of the really wealthy American, Canadian and British Travelling Public for a period of twelve Months. Advertisements must be sent in not later than Nov. 15th if illustrated, or Dec. 1st if in plain type, as the work will be issued early in January. For spaces apply to

OEO. E. DESBARATS, Proprietor.

OFFICE OF THE *Canadian Illustrated News,* Montreal, Canada. 4-12 tf

Printed and published by **GEORGE E. DESBARATS,** 1, Place d'Armes Hill, and 319, St. Antoine street, Montreal.