

# PORTABLE LIGHTS

*Pay well when the days get short. Let us send you our illustrated catalogue.*

**THE BUCKEYE LIGHT**

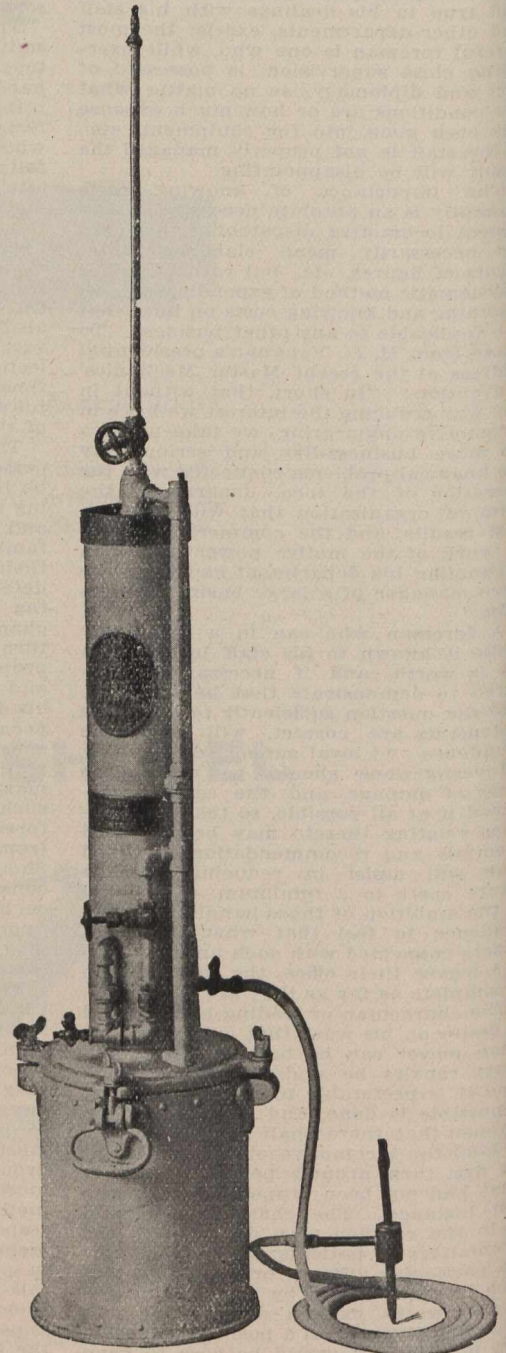


MADE IN SIZES FROM  
1000 TO 5000 CANDLE POWER  
IS RECOGNIZED AS THE STANDARD FOR  
**CONTRACTORS WORK**  
**RAILROADS**  
FOR TRACKLAYING, WRECKS AND REPAIR WORK  
**STEEL & IRON WORKS**  
**FOUNDRIES.**  
**BRIDGE BUILDING Etc.**

ASK FOR CATALOGUE.  
**NIGHT TURNED INTO DAY.**

**BUCKEYE KEROSENE LIGHTS.**

2,000 to 10,000 Candle Power. We carry in stock the popular sizes.



**HOLLAND ACETYLENE LIGHTS.**

For smaller work. In stock. Generate their own acetylene gas.

# MUSSENS LIMITED

Head Office,

**MONTREAL**

Branches

Toronto, 73 Victoria St.

Cobalt, Hunter Block

Winnipeg, 259-261 Stanley St.

Vancouver, 614 Hastings St., W.