

bridge at Hillsdale to cost \$4,000; new bridge at Salmon River to cost \$4,000; new covered bridge at Passekeag to cost \$10,000; steel bridges at Apohaqui and Roachville, each costing approximately \$10,000. Albert County—New covered bridge at Saw Mill Creek to cost \$3,500; new bridge at Mill Creek to cost \$7,000. Westmorland County—New steel bridge at Hall's Creek to cost \$15,000; new bridge at Memramcook to cost \$3,000; new steel bridge at Shediac to cost \$15,000; new embankment at Hollow Creek to cost \$1,000. Kent County—New covered span at McLeod's Mill bridge to cost \$1,500; new steel bridge at Cocagne to cost \$7,000; steel bridge at Back River to cost \$6,000. Northumberland County—On the north-west Miramichi six covered wooden truss spans on masonry piers to cost \$20,000; new covered bridge at Cain's Point to cost \$8,000; new steel bridge at Morrison to cost \$5,000; new bridge, possibly of steel and concrete, at Donalds to cost \$20,000. Gloucester County—New bridge at Bathurst Station to cost \$14,000; River bridge to cost \$15,000. Restigouche—New steel bridge over the Eel River to cost \$15,000; replacing wooden bridge at Hartt in Sunbury county by steel and masonry bridge to cost \$15,000.

## A. LEOFRED

(Graduate of McGill).

**Consulting Engineer**

**WATERWORKS A SPECIALTY.**

39 St. John Street QUEBEC  
Metropolitan Ins. Bldg. Phone 545

## STEEL

## HIGHWAY

## BRIDGES

**JENKS & DRESSER**

SARNIA ONT.

BUILDERS OF

**STEEL HIGHWAY BRIDGES**

**STRUCTURAL STEEL WORK**

**CONCRETE ABUTMENTS**

## Crushed Stone, Limited

### STONE

of any Size and in any Quantity on hand for  
Sidewalks, Roadwork or Concrete Work

Works:  
KIRKFIELD, ONT.

Head Office: 47 Yonge St. Arcade, TORONTO  
Phone Main 4516  
G. W. Essery, Manager.

## Blue Lake Cement

MADE BY

**THE ONTARIO PORTLAND CEMENT CO. LIMITED**

HEAD OFFICE: BRANTFORD, ONT.

LONG DISTANCE 'PHONE 194

## THE JOHNSON CORRUGATED STEEL BAR

FOR



**REINFORCED CONCRETE**

Manufactured by

**THE CORRUGATED STEEL BAR CO. OF CANADA, LIMITED**

Operating under Johnson Patent No. 91650 and by license of Sir Wm. Mather.

Office: Coristine Building, MONTREAL



New, Re-built and Second-hand  
**TRACTION and PORTABLE ENGINES**  
(Simple and Compound)

For drawing and driving Rock Crushers,  
Road Graders, Cement Mixers,  
Grinders, Threshers, Plows, Saw  
Mills and miscellaneous uses.

All Powers Quality the Best  
Correspondence Solicited

**Sawyer & Massey Co., Ltd.**

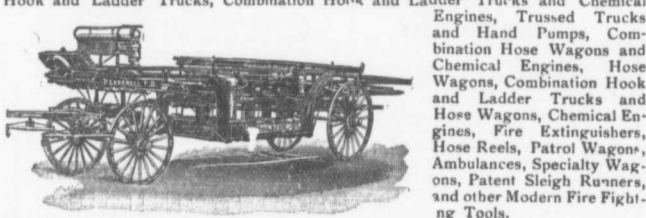
Road Machinery Department

Hamilton

Canada

## LIGHTNESS, STRENGTH AND ECONOMY

Seagrave Patent Trussed Ladders, Trussed Aerial, City Service and Village



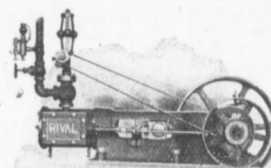
Prompt attention given all inquiries. All goods built to order.

Long Distance  
Phones 686 and 684

**W. E. SEAGRAVE, WALKERVILLE ONT.**

## RIVAL ENGINES

**MEDIUM PRICE  
MEDIUM SPEED  
MEDIUM SIZE**



Write for Circular.

**LAURIE ENGINE & MACHINE CO., Limited**  
MONTREAL

Toronto Agent: W. H. PARMELEE.

Halifax Agents: GUILFORD & SON