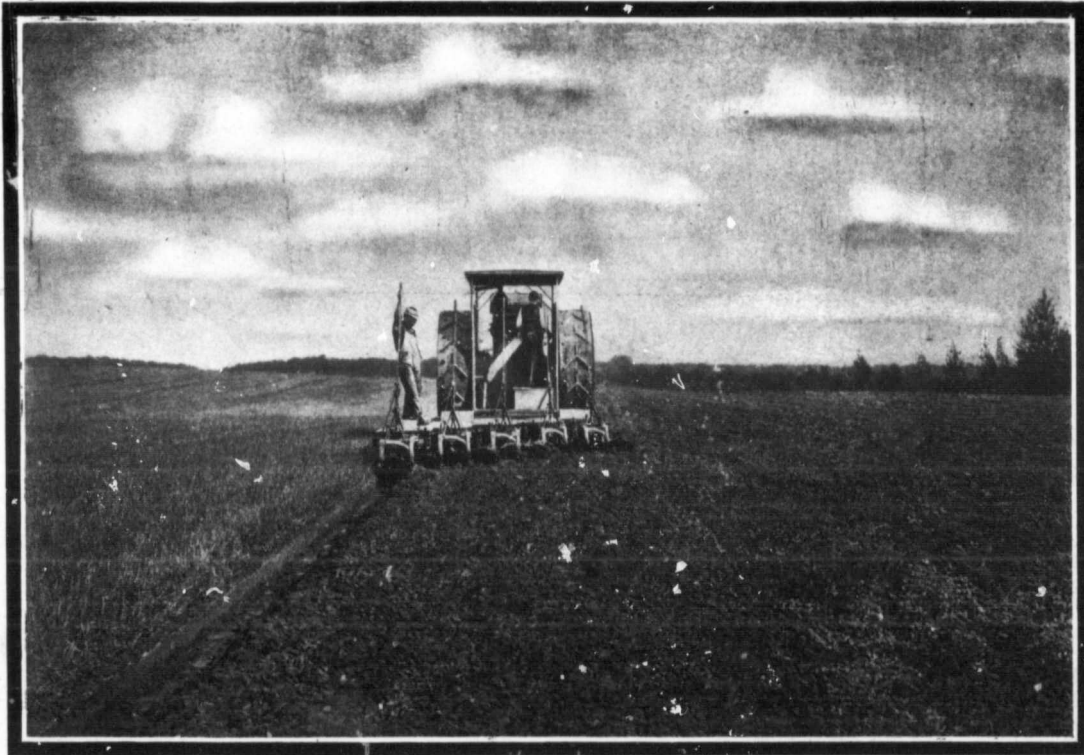


JOHN DEERE ENGINE GANGS

4, 6, 8, 10, 12 AND 14 BOTTOMS



BIG PLOWS for a BIG COUNTRY

Why turn a Single Furrow when you can turn from 4 to 14 furrows at the same time

Canada is a country of big farms, big possibilities and big profits—if you are a big farmer.

A general couldn't fight much of a battle with one soldier, and a farmer can't raise much wheat with a one-furrow plow.

Get the Right Gang

Bottoms in pairs give great strength and make the plows run steady. The beams can be braced and each plow steadies the other. You notice these features on a two-bottom horse gang—you can't beat that construction.

Don't Clog

Curved frames give great clearance, and the JOHN DEERE Engine Gang will go through straw, trash, weeds and scrub where other gangs clog and cause trouble.

Screw Clevis

In addition to the regular clevis adjustment, each beam is fitted with a screw clevis when attached to the frame. A man can stand on the platform and adjust any one plow with a wrench while the engine and gang are working. This saves time and is a most important feature.

Works with Coulters

Rolling Coulters can be used on the JOHN DEERE Engine Gang just the same as on a sulky plow.

Level Platform

The platform is roomy, free from obstructions and so arranged that the levers are all in reach.

Standard Sizes

4 or 6 Plows on One Frame 6 or 8 Plows on One Frame
10 or 12 Plows on One Frame

Extension can be furnished for the 12 bottom frame allowing two more plows to be used; making 14.

ILLUSTRATED BOOKLET FREE

Write us to-day for Free Booklet showing JOHN DEERE Gangs being used with all kinds of steam, oil and gasoline tractors. Don't fail to get this book and learn all about engine plowing. A post card will bring the book. Mention this paper when you write.

John Deere Plow Company, Limited

Winnipeg

Regina

Calgary

Saskatoon

Edmonton