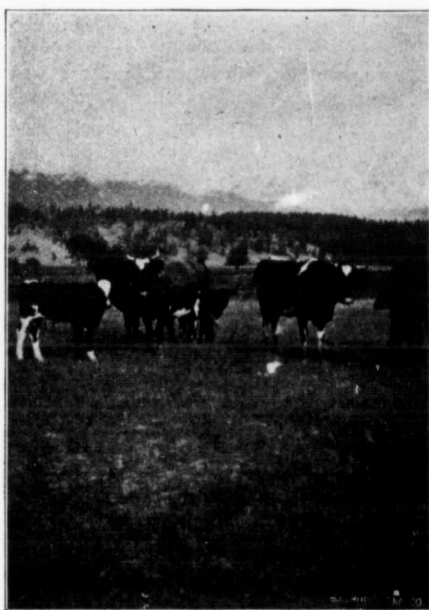


Table Showing Freight Rates and Prices of Pig Iron at Bull River and Pittsburgh.

Cost 1 ton pig iron at	Cost 1 ton pig iron, flat costs	Price pig iron June, 1902.	Profit 1 ton pig iron at points smelted from	Freight from smelted points to Pac. Coast.	Flat cost 1 ton pig iron	Price pig iron Pacific Coast	Profit 1 ton pig iron Pacific Coast	Freight to Orient from Pacific Coast	Cost Orient
Pittsburgh.....	\$12.94	\$22.50	\$ 9.56	\$13.40	\$26.34	\$35.90	\$ 9.56	\$10.00	\$36.34
Bull River.....	11.81	10.65	7.50	19.35	16.55	10.00	29.35
	1.00	5.90	6.99

It is unfortunately considered very visionary at present for anybody to take a sanguine view of mining



Scene on Kootenay River near Fort Steele.

in B. C. A fact often overlooked is that although in the initial stages of mining the ruggedness of the country is an enormous drawback on account of the expense of exploitation and of the bringing of supplies and materials up hill, when the balance is turned and it is a question of hauling the product down hill the principles of gravity afford, in the flowing streams, cheap power and easy transport. The natural grades of the mountains themselves facilitate the accumulation of raw materials in the most economical manner. The very snow itself, once so objectionable, acts like a lubricant under the loaded sleigh.

In the above description of the Bull River mines I am largely indebted to Mr. Jas. T. Laidlaw, mining engineer of Fort Steele, to whose skill and foresight the exploitation of the property is due. To Mr. Laidlaw must be given the credit of being instrumental in bringing the reserves of East Kootenay forward

both in connection with the coal and oil as with the metal mines.

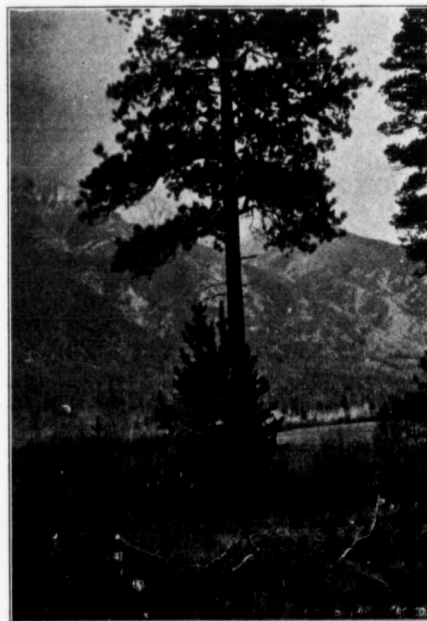
THE MINING CAMPS OF YALE DISTRICT.

(By E. Jacobs.)

CAMP M'KINNEY.

CAMP M'KINNEY was named after Al. McKinney who, in the spring of 1886, discovered and located the Cariboo mineral claim, situated on Rice Creek, a tributary of Rock Creek. McKinney, Fred Rice, — Burnham and "Frenchy" LeFeuvre in April of that year came up from Colville, Washington, or from below that town, to look at the Victoria and to prospect in the neighbourhood. Particulars of the discovery of the Victoria in 1884 were given in the first of this series of contributions. (See MINING RECORD for January, 1903, pages 452-3.)

EARLY HISTORY.—Leaving the Victoria during the first week in May, McKinney and his partners started for the mountain known as "Old Baldy," but the snow hindering them, they were about to turn back when McKinney accidentally happened on an outcrop of quartz in a little draw into which he had gone for water. Examining the quartz he found free gold



Steeple Mt., from Kootenay Valley.

showing in it. On the other side of the small creek another cropping of quartz was found, so it was thought that parallel veins running with the formation, occurred here, but with much snow on the ground the direction of the supposed two veins could not be im-