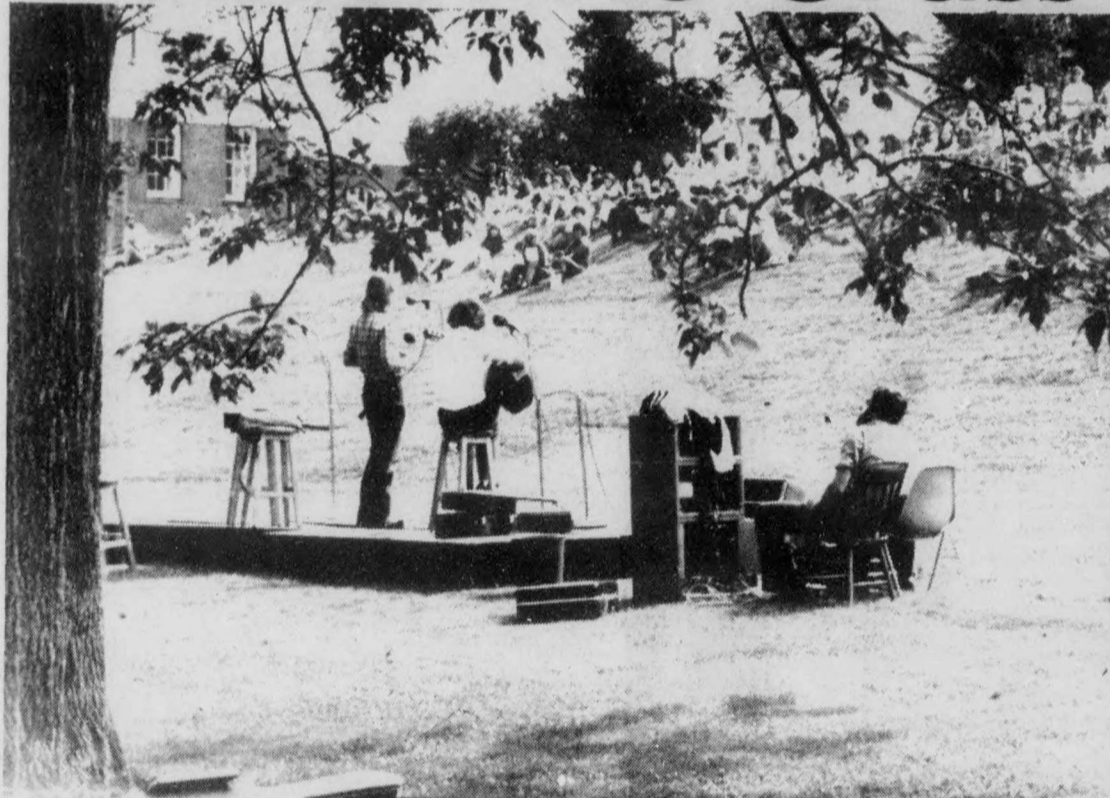
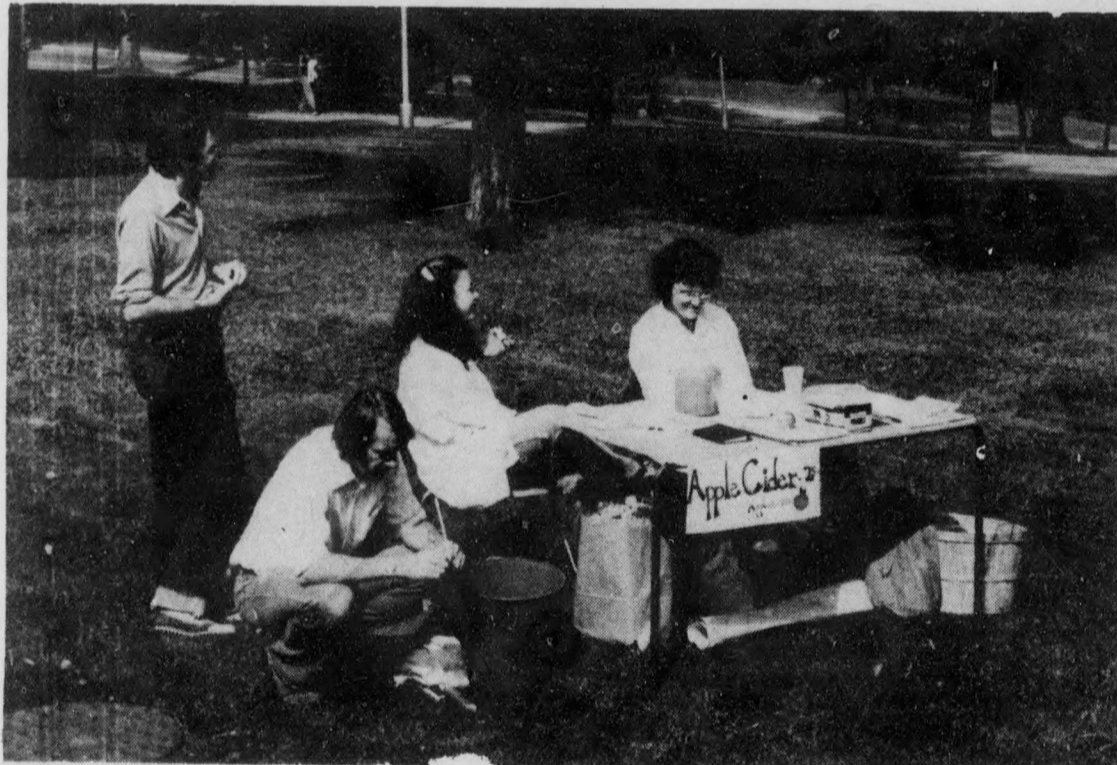


# Folk on the Grass



The Fredericton Folk Collective entertained a receptive crowd last Sunday by the Old Arts Building. Pictured are Steve Peacock and Marc Lulham.



## Singers of UNB unite

by TIM COOPER

Fine arts are not common on the UNB campus. Rather, this is generally considered an employment oriented school. Of course there are the resident musicians, writer and artist, the Creative Arts Committee does sponsor various performances and courses in art and music appreciation are offered at the Faculty of Education, but there is little encouragement for the amateur to participate in the arts on campus with the exception of the excellent work done by the Folk Collective.

However, in spite of cut backs which saw the end of the UNB band and a lack of enthusiasm and support which spelled the end of the Art Center Singers, there is still a glimmer of hope for the future of participatory musical performance on campus. The UNB Choral Society is trying to spring into existence this year. The Society has no budget for new

music but there is a small stock of reasonable material at the Faculty of Education which can be used for a short time.

Great musical or singing ability are not the prerequisites for joining the group. Instead, enthusiasm and open support are much more important. The choir is meeting from 3:30 to 4:30 on Mondays and Wednesdays in Room 143 of d'Avray Hall, but if a person can only attend one rehearsal per week, their presence is greatly valued. The aims of the group in this first year do not include putting on a full-fledged concert. Rather it is hoped that a core group of reasonable size and ability will become established. Performances will occur as repertoire is learned and the choir would like to present four or five short noon hour concerts at various places about the campus in order to gain experience, exposure and create an awareness of the group's existence and

vitally. Although the UNB Choral Society is meant to be mainly composed of and controlled by the students, staff members are welcome to join the ensemble, bringing either their expertise or enthusiasm to lend support. Various student and staff members will be asked to accompany the ensemble on occasions, providing each accompanist with much time to sing along. The long term goals of the UNB Choral Society are as various and awe-inspiring as the many difficulties it will be required to overcome in this first year. If you would like to join the ensemble and the fight for recognition of the amateurs right to involvement in the arts on this campus, please join rehearsals in Rm. 143 of d'Avray Hall on Mondays and/or Wednesdays at 3:30. If you cannot join at this time but are interested in the group, please call Prof. Tim Cooper at 453-3503 for more information.

## THE FREDERICTON FOLK COLLECTIVE

The Fredericton Folk Collective is a group of people who get together regularly to play, sing and/or listen to folk music. On campus last year, the Collective staged several coffeehouses featuring Maritime, Quebec and New England musicians as well as the regulars from the Collective's Picking Crew.

Memberships are available this year for \$5, \$7.50 for families. Members are updated by receiving the Collective's newsletter. They also receive discount prices at concerts or coffeehouses organized by the Collective.

Membership forms are available from any Collective member, from the Woodshed Coffeehouse (top floor, SUB), at Folk Collective events, or by writing the Collective c/o the Arts Centre, UNB, P.O. Box 4400, Fredericton, E3B 5A3.

Interested people are invited to the weekly Song Circle, Thursdays at 8:30 p.m. at the Woodshed. A song circle is a gathering where the musicians and singers in the room each exchange songs with the rest of the group. Favourite musical areas include old British, French, Canadian and American folksongs and instrumentals, blues, and some modern folksongs as well.

The first Collective coffeehouse of the season will be staged one week from tonight, Friday, Sept. 21, 8:30 p.m., at the Memorial Hall theatre. Come enjoy a relaxed candle-lit atmosphere, good drink and food, and of course, the music taking place under the spotlight. Musicians wishing to perform at the Collective should call Reg Hayes, 472-0774.

Please note that the Woodshed Coffeehouse will begin its own regular season this coming Monday to Wednesday evenings, featuring the return of Steve Peacock and Marc Lulham. Admission to the Woodshed is free.

This column will appear weekly. For further information, contact Andrew Bartlett at 455-6120.

## What's your sign?

by PAM SAUNDERS

SESSION 1 - Sept. 20th

The U.N.B. Astrology Society is offering an Introduction to Astrology for beginners. This is an interest course, taught by former UNB student Glenn Murray. While Murray is not a professional astrologer, he has studied the subject for six years. His primary aim is to promote an interest in astrology in Fredericton, and to provide instruction in the basics of the subject. In ten weeks, he plans to cover an introduction to signs, planets, houses, aspects, as well as instructions on charting and interpreting personal horoscopes.

The course has received SRC sponsorship, and will be held in the SUB. The fee for the ten week course is \$35, and enrollment is limited to 20 people. Much of the money will be used to cover photocopying costs, as no textbooks are required. Murray noted that there is a possibility that the course will be offered after Christmas as part of Extension Services. However, if the present arrangement is successful, Murray would like to see the course remain in the SUB, as costs can be kept down.

Prof. Cooper teaches music education and appreciation at the Faculty of Education and directs St. Dunstan's Choir in Fredericton.

A brief Historical outline of the Astrological tradition from the modern perspective / The uses of Astrology / Introduction to some of History's most prominent Astrologers / Outline of suggested readings for further background / Hints for compiling your own information for Astrological studies / A look at the forthcoming "Jupiter Effect" / The psychology of cycles and types / Outline of symbols used / An introduction to Luna.

SESSION 2 - Sept. 27th

The Signs of the Zodiac / Their meanings and interpretations / Sign-rulerships in professions, medicine, locations, etc. / Relationships between the signs / The triplicities and quaternities / Listings of hundreds of famous personalities in their Astrological signs and how they embody those signs.

SESSION 3 - Oct. 4th

The Planets of the Zodiac / Planetary rulerships and affiliations with the signs /

For further information, please contact Glenn Murray, 366-5597. The course is open to students, faculty and alumni.

## Cre

by  
U.N.B.  
and vari  
realize  
professo  
successfu  
bookstor  
shelves i  
"On Cam  
exhibit t  
these wr  
also offe  
poetry v  
authors.  
inexpens  
are usua  
within th  
The Fic  
lished or  
the unive  
subscrip  
entertain  
and w  
contribu  
come  
surround  
good sh  
you're in  
reviews,  
Fiddlehe  
buy a



## Stud

## rec

The  
producti  
sity of M  
public re  
Septemb  
9:30 p.m.  
Hotel. T  
preview  
be the c  
suggestion  
comment  
MPBN  
Frederic  
support  
they are  
hear fr  
Refresh  
and all  
Neil Sw  
Departm  
453-478  
or 311