

beyond the ends of a well-shaped rolling coat-collar. The mutton-leg sleeves are gathered and stand out in a puff at the top. Openings to side-pockets are covered by square-cornered laps. Machine-stitching finishes the jacket in tailor style.

A velvet collar facing is a dressy addition to jackets, for which diagonal, serge, chevot and mixed coatings are liked.

The straw hat is trimmed with quills, aigrettes, light ribbon and a ruffle of dark silk.

FIGURE No. 196 T.—LADIES CAPE-WRAP.

(For Illustration see Page 282.)

FIGURE No. 196 T.—This represents a Ladies' cape-wrap. The pattern, which is No. 8589 and costs 1s. 3d. or 30 cents, is in ten sizes for ladies from twenty-eight to forty-six inches, bust measure, and is further illustrated on page 295.

This stylish cape-wrap is most convenient to wear

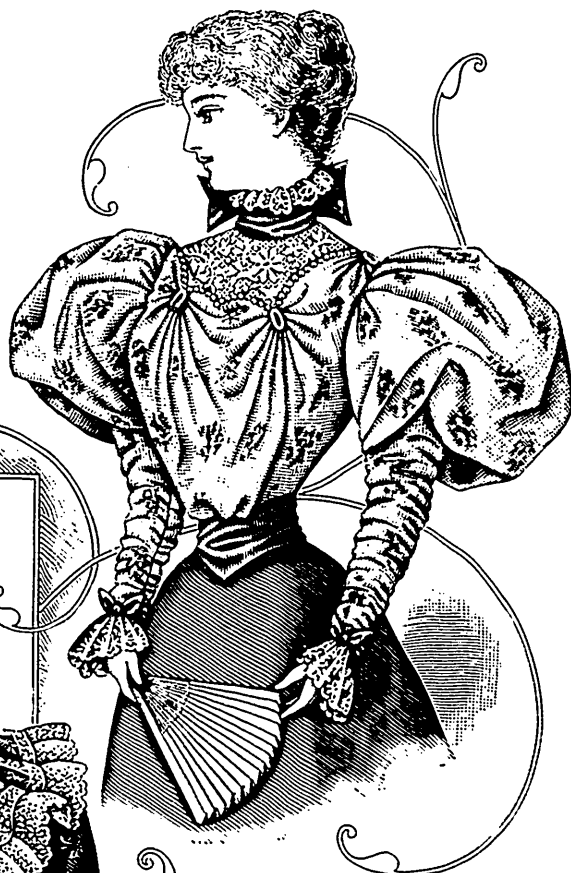


FIGURE No. 198 T.

fronts of the wrap are closely fitted and are narrowed toward the waist-line, the fronts being pointed at the end of the closing while the back falls in two tabs below the waist. Circular, ripple sides connect the back and fronts, and are smooth at the top. The neck finish is a standing collar which is concealed by a deeply-fluted circular ruffle that flares from its upper edge, and lace is frilled in to give a fluffy, high effect.

Extremely smart wraps of this kind can be made of figured or plain silken textures, with elaborate garnitures of lace, gimp, passementerie, etc.

Ribbon, flowers and white embroidered chifon form the trimming of the straw hat.



FIGURE No. 197 T.

FIGURE No. 197 T.—This illustrates LADIES' FANCY WAIST.—The pattern is No. 8613 (copyright), price 1s. or 25 cents. FIGURE No. 198 T.—This illustrates LADIES' FANCY WAIST.—The pattern is No. 8574 (copyright), price 1s. 3d. or 30 cents.

(For Descriptions see Pages 283 and 284.)

FIGURES NOS. 197 T AND 198 T.—LADIES' FANCY WAISTS.

(For Illustrations see this Page.)

FIGURE No. 197 T.—This illustrates a Ladies' waist. The pattern, which is No. 8613 and costs 1s. or 25 cents, is in thirteen sizes for ladies from twenty-eight to forty-six inches, bust measure, and may be seen differently made up on page 304

of this number of THE DELINEATOR.

The fichu drapery is a graceful and becoming feature of the waist, which is here shown made of figured silk. The drapery

with gowns having fluffy accessories that would be crushed by a jacket. Black satin is the material here shown and the decoration introduces jet, lace ruching and ribbon. Both the back and