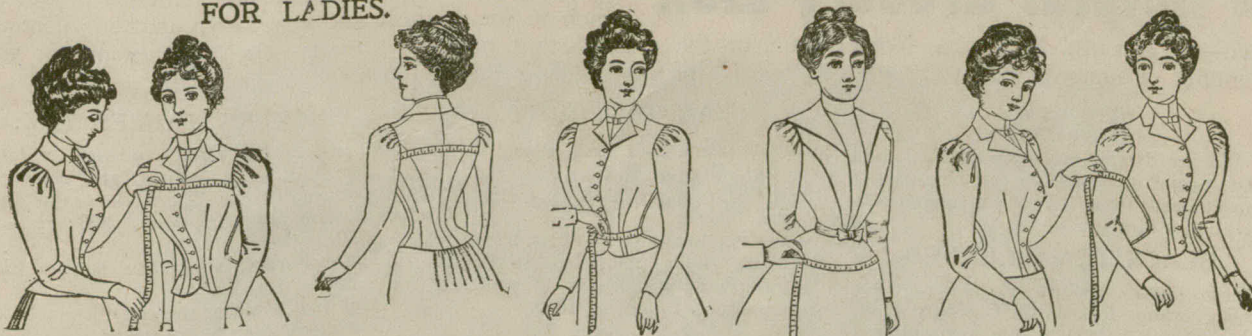


FOR LADIES.



SCALE NO. 1.
PROPORTIONATE BUST, WAIST AND HIP
MEASURES FOR LADIES.

BUST.	WAIST.	HIP.	BUST.	WAIST.	HIP.
30	20	36	40	30	48½
31	21	37	41	31	50½
32	22	38	42	32	51½
33	23	39	43	33	53
34	24	40	44	34	54½
35	25	41	45	35	56
36	26	42½	46	36	57½
37	27	44	47	37	59
38	28	45½	48	38	60½
39	29	47			

For the Pattern of a Lady's Basque or any Garment requiring that a Bust Measure be taken:—Put the Tape-Measure around the Body, over the Dress, close under the Arms, drawing it closely—NOT TOO TIGHT.

For the Pattern of a Lady's Skirt or any Garment requiring that a Waist or Hip Measure be taken:—When the Lady is fairly proportionate, the Waist Measure will suffice for a Skirt, Petticoat, etc.; to take this, pass the Tape-Measure about the Waist, over the dress. When she is large about the Hips in proportion to her Waist, order the Pattern by Waist and Hip Measure; to take the Hip Measure, pass the Tape-Measure easily around the Hips, about six inches below the waist. *Scale No. 1 shows Proportionate Bust, Waist and Hip Measures for Ladies.*

For the Pattern of a Lady's Sleeve:—Put the Measure around the Muscular Part of the Upper Arm, about an inch below the lower part of the arm-hole, drawing the tape closely—NOT TOO TIGHT.

FOR MISSES, GIRLS AND
CHILDREN.

PROPORTIONATE AGES, AND BUST AND
WAIST MEASURES OF MISSES,
GIRLS AND CHILDREN.

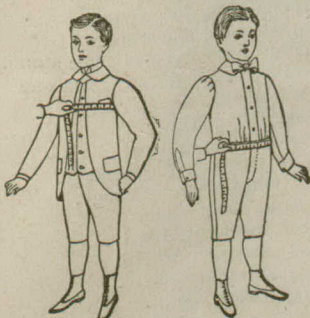
AGE.	BUST.	WAIST.	AGE.	BUST.	WAIST.
1 $\frac{1}{2}$	17	12 $\frac{1}{2}$	9	26	23 $\frac{1}{2}$
2	18	13 $\frac{1}{2}$	10	27	24
2 $\frac{1}{2}$	19	14 $\frac{1}{2}$	11	28	24
3	20	15 $\frac{1}{2}$	12	29	24 $\frac{1}{2}$
4	21	16	13	30	25
5	22	16 $\frac{1}{2}$	14	31	25
6	23	17 $\frac{1}{2}$	15	32	25
7	24	18	16	33	25
8	25	18 $\frac{1}{2}$			



For the Pattern of a Boy's Coat or Vest:—In ordering a Coat or Vest Pattern for a Boy, it is usual to order by the Age; but when a Boy is extra large or small for his Age, the order by the Breast Measure instead of the Age, but give the Age also. In measuring, put the Measure around the Body, under the jacket, close under the arms, drawing it closely—NOT TOO TIGHT.

NOT TOO TIGHT

For the Pattern of a Boy's Overcoat:—In ordering an Overcoat Pattern for a Boy it is usual to order by the Age, but when a Boy is extra large or small for his Age, order by Breast Measure instead of the Age, but give the Age also. In measuring, put the Measure around the Breast, OVER the garment the coat is to be worn over.



For the Pattern of a Boy's Trousers:—In ordering a Trousers Pattern for a Boy it is usual to order by the Age, but when the Boy is extra large or small for his Age, order by the Measure instead of the Age, but be sure to put the Measure of the waist in the trousers at the waistband. *Scale of Measurements for Boys' Ages, and Breast and*

Coat or Vest:—Put the Measure around the Body, drawing it closely—NOT TOO TIGHT.

For the Pattern of a Man's Overcoat:—Measure around the Breast, over the

For the Pattern of a Man's Trousers:—Put the Measure around the Body, over the trousers at the waist, drawing it closely—NOT TOO TIGHT.

PROPORTIONATE AGES, AND BREAST AND
WAIST MEASURES OF BOYS.

AGE.	BREAST.	WAIST.	AGE.	BREAST.	WAIST.
2	19	20½	10	27	25½
3	20	21½	11	28	26
4	21	22	12	29	27
5	22	22½	13	30	27½
6	23	23	14	31	28½
7	24	23½	15	32	29
8	25	24	16	33	30
9	26	24½			


For the Pattern of a Man's or Boy's Shirt:—For the Size of the Neck, measure the exact size where the neck-band encircles it, and allow one inch—thus, if the exact size be 14 inches, select a Pattern marked 15 inches. For the Breast, put the Measure around the Bust, over the vest, under the jacket or coat, close under the arms, drawing it closely—NOT TOO TIGHT. In ordering a Boy's Shirt Pattern, give the Age also.

On orders for *Packages of Patterns* the following Discounts will be allowed, but the Entire Amount must be ordered at one time:

On Receipt of \$3.00 we will allow a selection to the value of \$4.00 in Patterns.

"	"	\$5.00	"	"	"	"	"	\$7.00	"
"	"	\$10.00	"	"	"	"	"	\$15.00	"

For the Pattern of a Hat, Bonnet, Hood, etc.:—
For Children and Youths it is customary to order by the



Age; but when the Head is extra large or small for the Age, instead of ordering by Age, order by Head Measure or Hat Size. For Adults, order by Head Measure or Hat Size. To measure, put the measure about the Head, drawing it closely—not too tight. Scale No. 4 shows Proportionate Ages, Head Measures and Hat Sizes for Children and Youths up to 16 years. Scale No. 5 shows Adults Proportionate Head Measures and Hat Sizes for

PROPORTIONATE AGES, HEAD MEASURES AND HAT SIZES FOR CHILDREN AND YOUTHS.

AGE.	HEAD MEAS.	HAT SIZE.	AGE.	HEAD MEAS.	HAT SIZE.
1	17 $\frac{1}{8}$	5 $\frac{1}{8}$	9	20 $\frac{3}{8}$	6 $\frac{3}{8}$
2	18 $\frac{1}{8}$	5 $\frac{3}{8}$	10	20 $\frac{7}{8}$	6 $\frac{3}{4}$
2	18 $\frac{1}{8}$	5 $\frac{3}{8}$	11	21	6 $\frac{3}{4}$
3	19 $\frac{1}{4}$	6	12	21 $\frac{1}{8}$	6 $\frac{3}{4}$
4	19 $\frac{5}{8}$	6 $\frac{1}{8}$	13	21 $\frac{1}{4}$	6 $\frac{3}{4}$
5	20	6 $\frac{1}{4}$	14	21 $\frac{3}{8}$	6 $\frac{3}{4}$
6	20 $\frac{3}{8}$	6 $\frac{3}{8}$	15	21 $\frac{5}{8}$	6 $\frac{3}{4}$
7	20 $\frac{3}{4}$	6 $\frac{3}{4}$	16	21 $\frac{5}{8}$	6 $\frac{3}{4}$
8	20 $\frac{5}{8}$	6 $\frac{1}{2}$			

The average HAT SIZE is one-third of the Head Measure, less $\frac{3}{8}$ inch.

PROPORTIONATE HEAD
MEASURES AND HAT SIZES
FOR ADULTS.

HEAD MEASURE.	HAT SIZE
21 3/4	6 3/8
22	7
22 1/4	7 1/8
22 1/2	7 1/4
23	7 1/2
23 1/4	7 3/4
23 1/2	7 7/8
24	8
24 1/4	8 1/8
24 1/2	8 1/4