

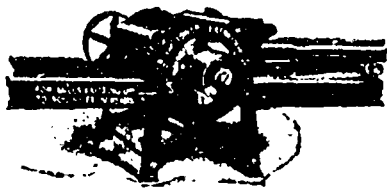
If you are able to hold only 60 to 70 pounds of steam and wish to carry from 80 to 100 pounds, why not put in the

Gordon Hollow Blast Grate



Why not increase your output and get more per M for your lumber by putting in a

Tower Edger and Trimmer



These Edgers and Trimmers are designed for mills cutting up to 30,000 feet in ten hours.

The Gordon Hollow Blast Grate Co.

ESTABLISHED 1889.

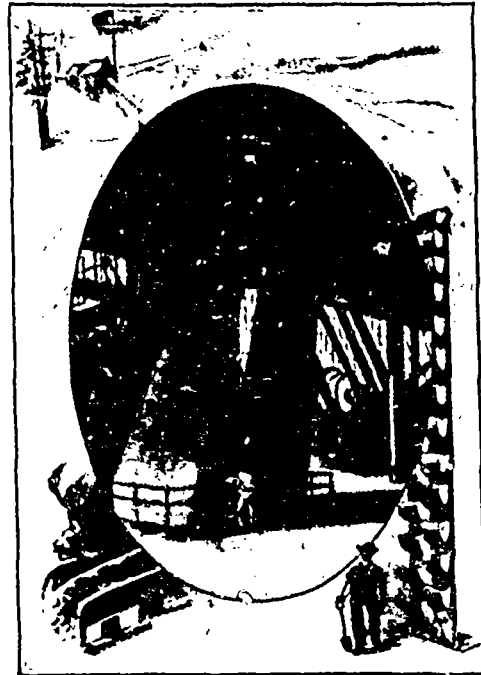
GREENVILLE,

MICHIGAN

The largest manufacturers of Blast Grates, Edgers and Trimmers in the world.
Send for Catalogue D.

RUBBER BELTING

For
Transmitting
Elevating
and
Conveying



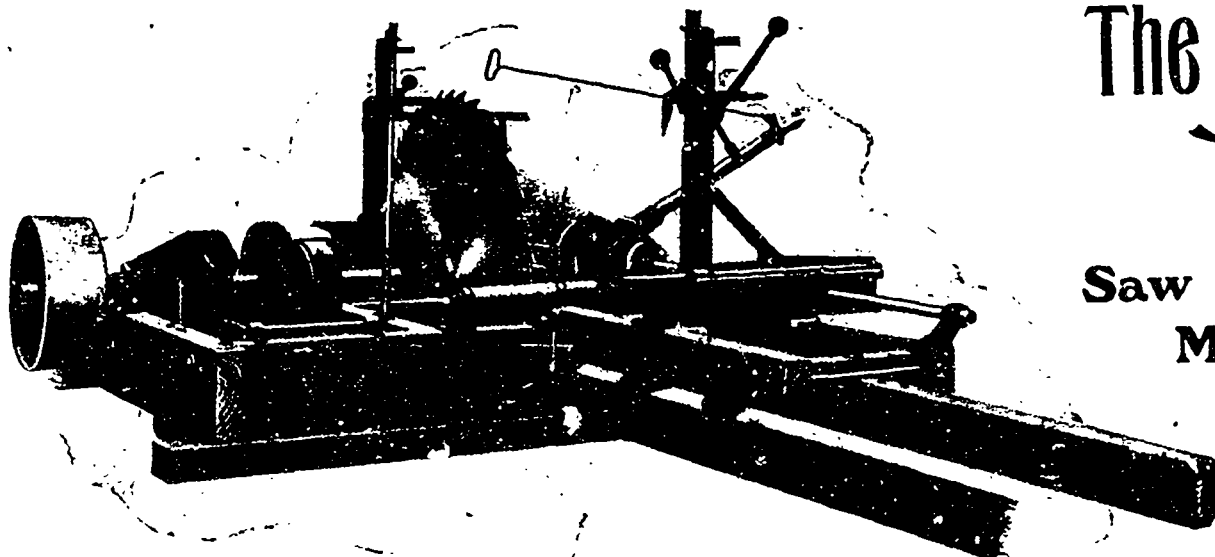
Rubber
Hose
for
Water
Steam
Air
Suction

Fire
Protection

THE GUTTA PERCHA & RUBBER MFG. CO. OF TORONTO, LIMITED.

45, 47 AND 49 WEST FRONT STREET, TORONTO, CANADA

Branches : Montreal, Winnipeg.



The Knight M'f'a Co.

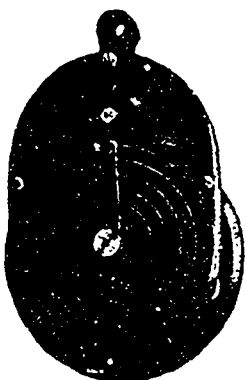
GANTON, OHIO, U. S. A.

Manufacturers
of . . .

**Saw Mills,
Mill Dogs,
Set Works
and Edgers**

Correspondence from Canadian Mill Men invited. Send for a copy of our handsome Catalogue. It will interest you.

YOU CANNOT AFFORD
TO BE WITHOUT A



GEORGE LUMBER REGISTER

The Only Perfect Register on the Market

We will send one of these Registers FREE on 30 days trial to any address and pay return charges if not entirely satisfactory.

The GEORGE REGISTERS

is being used by the largest Planing Mills in the country, who have given their written testimonials.

Here is a sample :-

THE STOUFFVILLE BRASS & STEEL WORKS,
Stouffville, Ont.

Burks Falls, Ont., Feb. 13, 1903.

GENTLEMEN,—In answer to your inquiry with regard to the S. George Lumber Register, we desire to say that it has given every satisfaction. We put in one of .8000 ft. capacity lineal in the spring of 1902 and have used it constantly ever since and it has never given any trouble whatever, has never been out of order or laid up for repairs. We may further say that we are so well pleased with it that we have ordered another of the larger capacity of 60,000 ft. lineal, which we intend to use on another machine. In conclusion we may say that we do not see how this machine could be improved upon and we feel certain that it will be a long time before a lumber register is produced which will be superior to the S. George. Yours truly,

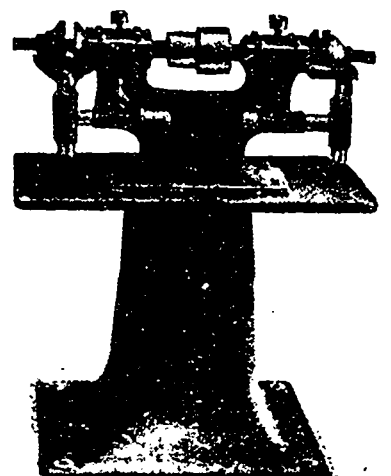
THE KNIGHT BROS. CO., HENRY KNIGHT, Manager.

EMERY GRINDERS

The annexed cut represents our latest and most improved style of Emery Stand and the incessant demand for a frame that will resist the vibration of the stone when running at full speed has made us particularly careful to make "rigidity" one of the principal features of the same.

THE STOUFFVILLE BRASS & STEEL WORKS
STOUFFVILLE, ONT.

SQUARE CASE EMERY GRINDERS



Write for Prices and Terms.