

These Long Values and Short Prices at Simpson's Today

The August Sales

Contain so many opportunities to stretch your income over the numerous needs that arise in your home-making that it would be poor economy to neglect them, particularly when there's the

HOMELOVERS' CLUB

with its arrangement for spreading the payments for Homefurnishings out over the year. See the Club Secretary on the 4th Floor and begin your choosing at once. The values warrant it.

For Bedroom, Kitchen and Dining-Room These Specials in Good Furniture

- BRASS BEDSTEAD, SPRING AND MATTRESS**—Bedstead, 2-inch posts, heavy turned caps. Mattress, curled seagrass and jute felt. Spring, steel tubing frame, strong woven steel coil wire springs; complete in all standard sizes. Regularly \$15.75. Tuesday 10.50
- BRASS BEDSTEAD, SPRING AND MATTRESS**—Bedstead, 2-inch posts and top rails, turned ball corners. Mattress, filled with pure cotton felt. Spring, steel tube frame; complete. Regularly \$36.00. Tuesday 21.95
- DRESSER**—"Colonial" design; mahogany finish; triple mirrors. Regularly \$24.75. Tuesday 19.00
- DRESSER**—Mahogany finish. Regularly \$23.00. Tuesday 17.35
- DINING-ROOM CHAIRS**—Solid quarter-cut oak; fumed, five side and one arm chair; heavy construction; loose slip seats, in leather. Regularly \$27.50. Tuesday 20.00
- DINING-ROOM CHAIRS**—Quarter-cut oak; fumed or golden; upholstered backs and loose slip seats, in genuine leather; five side and one arm chair. Regularly \$24.95. Tuesday 19.00
- BUFFET**—Quarter-cut oak; fumed or golden; "Colonial" design. Regularly \$46.00. Tuesday 31.00
- BUFFET**—Quarter-cut oak; fumed or golden. Regularly \$32.00. Tuesday 25.00
- CHINA CABINET**—Quarter-cut oak; golden finish; "Colonial" design. Regularly \$61.00. Tuesday 46.00
- CHINA CABINET**—Quarter-cut oak; golden finish. Regularly \$41.00. Tuesday 33.50
- CHINA CABINET**—In genuine quarter-cut oak; fumed finish. Regularly \$40.00. Tuesday 30.00
- BAKING CABINET**—In maple; natural finish; size of top, 26 in. x 48 in.; cutting and kneading boards; two bins for flour, etc. Regularly \$8.50. Tuesday 6.75
- KITCHEN CABINET**—Maple, in natural or walnut finishes; top part has double glass door; nickeloid top; size 27 in. x 40 in. Regularly \$20.50. Tuesday 16.00
- KITCHEN CABINET**—In gunwood; dull finish; fully equipped. Regularly \$32.00. Tuesday 25.75

Floorcoverings

At Generous Sale Prices
SPECIAL PURCHASE OF ENGLISH BATH MATS.

In-rose shade, several designs:
18 x 34 inch. Regularly \$1.25. Tuesday .95
22 1/2 x 41 inch. Regularly \$1.75. Tuesday 1.29
27 x 54 inch. Regularly \$2.75. Tuesday 1.95

Rug Rugs, \$3.50 and \$4.99—Above three dozen in one size. 4 1/2 x 7 1/2; the colors are lavender, rose, mulberry, tan, blue, green and gray.

Scotch Tapestry Rugs. These August values are particularly good owing to the big advances in the cost of manufacture; size 6 1/2 x 9 1/2, at \$8.95; 9 1/2 x 12 1/2, at \$12.95; 12 1/2 x 15 1/2, at \$16.95; 15 1/2 x 20 1/2, at \$22.95; 18 1/2 x 24 1/2, at \$28.95; 21 1/2 x 28 1/2, at \$34.95; 24 1/2 x 32 1/2, at \$40.95; 27 1/2 x 36 1/2, at \$46.95; 30 1/2 x 40 1/2, at \$52.95.

Four Good Specials in Small Rugs—English Axminster Rugs, mostly chintz and floral designs. In tan and greens, size 29 x 40 inch. Regularly \$2.35. Tuesday \$1.95; 32 x 43 inch, regularly \$2.75. Tuesday 2.25

English Mottled Axminster Rugs, \$1.45—Made from the short ends of yarn, woven into good serviceable rugs of mixed colors that will go with almost any surroundings, size 27 x 40 inch, unfringed. Tuesday 1.45

Thick Reversible Wool Rugs, size 24 x 48 inch. Regularly \$1.25. Tuesday .95

Sale Price on Curtains and Draperies

English Lace Curtains at 49c Per Pair—In white, plain centres, with lace borders, 2 1/2 yards long, 88 inches wide. Tuesday, per pair 49c

Scrim and Vellu Curtains at Half Price—A manufacturer's clearing, trimmed with lace or made up with insertion borders, 2 1/2 yards long, 86 and 40 inches wide. Regularly \$2.75, \$2.50 and \$2.25 per pair. On sale Tuesday

Fancy Bordered Scrim at 33c Per Yard—American scrim, with woven borders, 36, 38 and 40 inches wide, white, ivory and ecru. Tuesday, 33c

English Curtain Nets at Half Price—Bungalow nets in the new, small and all-over patterns, white and ivory. Regularly 45c. Tuesday 35c

English Cretonnes for Curtains or Slip Covers at 33c Yard—30 inches wide. Regularly 45c and 50c. Tuesday, yard 33c

Sunfast Casement Cloth, 50 inches wide. 59c

English Washing Chintz, yard 39c

FOR TUESDAY MORNING, 8.30 A.M.

Mullins, Scrim, Nets and Bordered Curtain Materials, 25 to 40 inches wide, in white, ivory or ecru, for sash curtains. Regularly 15c, 20c and 25c, some were 25c per yard. Tuesday morning, yard 10c

Bevelled Mirrors

British plate; sizes 18 in. x 36 in. and 18 in. x 40 in.; white enamel, oak, mission or gilt frame. Tuesday 6.50

Wall Papers

At special prices, Tuesday, for Homelovers' Club Members and others.

Electric Ceiling Shower

18-inch plate, two lights, chain drops, glass-ware. Regularly for \$2.50. Tuesday 1.25

Installed within city limits free; inspection fees and insulation joints extra.

Your Buying Privileges in the Black Silk Sale

- INCLUDE SIX SILK SPECIALS.
- 3,000 yards Crepe de Chine, black and ivory; 40 inches wide. Phone orders taken 1.10
 - 500 yards Black Silk Paillette, 36 inches wide; advance showing 86
 - Chiffon Taffetas, 40 inches wide 1.46
 - Black Duchesse Mouseline, 36 and 38 inches wide 1.15
 - Black Duchesse Satins and Paillettes, 36 and 38 inches wide, at 98

Black Dress Goods and Suitings

- \$1.00 Black Poplin Armure and Santoy, 75c. Guaranteed black; 42 to 44 inches. Tuesday 75c
- Priestley's Dress Fabrics, all the new weaves, in all-wool; also silk and wool colienne. Regular \$1.25 and \$1.50. Special 1.00
- Crepe Permo Suitings. Regular \$1.50. Special 1.25
- Black Broadcloth, our standard satin and paeon finished broadcloth; soap shrunk and spot-proof; 52 inches wide. Regular \$2.00. Special 1.46

Savings on Wash Goods

- 28-inch White English Poplins. Regularly 25c yard. On sale Tuesday 15
- 28-inch White Dotted Crepe. Tuesday 9 1/2
- 28-inch Voiles, floral effects on white or colored grounds. Tuesday 25

Bungalow Aprons 75c

Blue Chambray Apron Dresses; front opening, cuffs and belt of self. MESSALINE PETTICOATS, \$4.95.

Heavy all-silk messaline; black, navy, purple, new blue, sapphire, white and gold; accordion pleated flounce; 108 inches round foot of skirt; "Newton Adjustable" top; lengths 36 to 42. Tuesday 4.95

High-Grade Blouses \$2.95

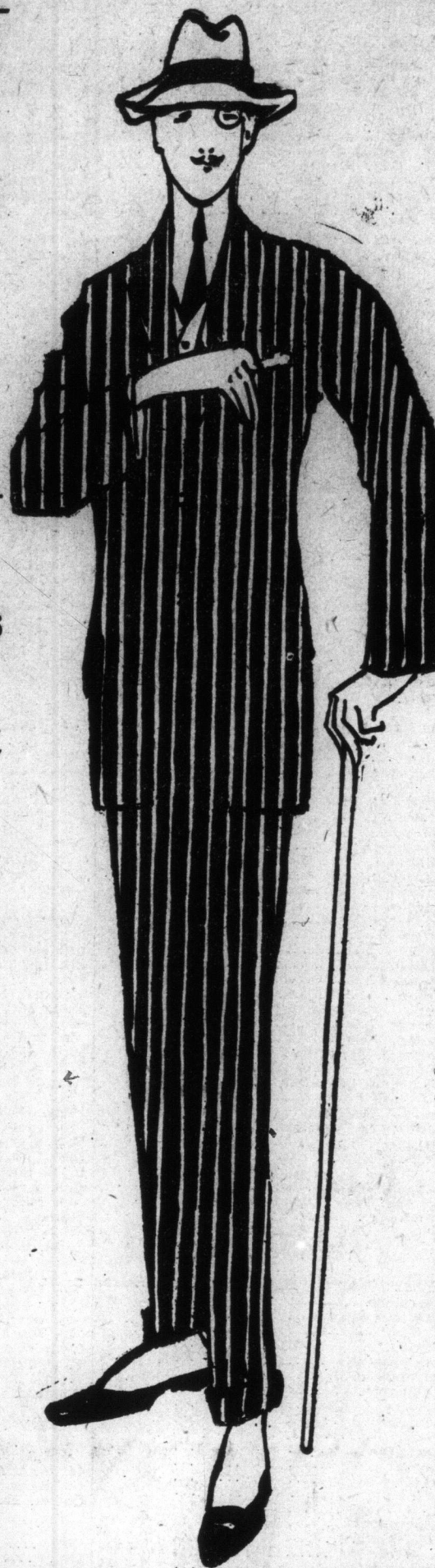
Some of our most expensive imported Blouses, in crepe, satin duchesse, shadow lace and chiffon; individual styles, in new colorings, ecru and white; all sizes to 42 inches. Were \$7.50, \$9.50, \$10.00, \$12.00 and \$15.00. Tuesday 2.95

\$1.25 ART SILK TAMS, 69c.

Best quality art silk; several weaves; all the newest colors; plain and combination effects. Regularly \$1.25. Tuesday .89

VISITORS to the city who

are accustomed to our mail order prepaid service at home will be able to get the same prepayment on similar goods to those catalogued if bought in the Store. Heavy or bulky goods not catalogued, such as furniture or groceries, will be prepaid if the bill amounts to \$10.00 or over.



Clearing Men's Palm Beach Suits at \$6.95

85 only, two pieces, unlined. Sizes 34 to 44. Regularly \$10.00 to \$15.00.

MOTOR DUSTERS, \$1.25.

Light weight, natural color linenette. Sizes 34 to 44.

BOYS' KHAKI NORFOLK SUITS, \$1.19.

Bloomer suits; sizes 6 to 14 years. Regularly \$2.00 and \$2.50.

BOYS' "SPORT" SHIRT WAISTS, 35c.

Blouse style, in Madras stripes; sizes 7 to 14 years. Regularly 65c to 75c.

Photo Supplies

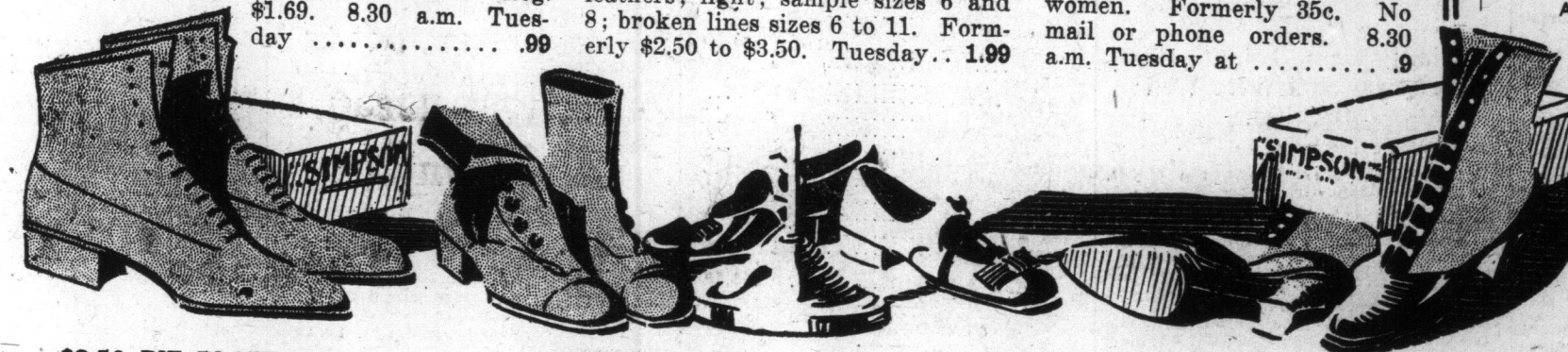
\$1.50 Developing Outfit 1.39

Electric Dark Room Lamps 1.50

A Substantial Saving on Every Pair of Boots Sold Today

Just check up the prices and see what you can save in outfitting your family—father, mother, boys and girls—today, and be here at 8.30 a.m. to make sure.

- ALL MEN'S LOW CUTS (EXCEPT "VISITORS") AT \$1.99.**
Our regular \$3.00 to \$4.50 Oxfords in tans, blacks and patents; button and blucher styles; Goodyear and hand-turned soles newest designs and popular styles; all sizes in the lot. Formerly \$3 to \$4.50. Tuesday 1.99
- BOYS' BOOTS, 99c.**
300 pairs, black box kip blucher boots; sizes and half sizes 11 to 2. Reg. \$1.69. 8.30 a.m. Tuesday .99
- WOMEN'S PUMPS, COLONIALS AND OXFORDS, \$2.49.**
Ten tables of the newest and best summer styles, in selected patent colt, vic kid, dull kid and calf leathers, with foxings and tops of black and colored cloth and black matt leather. Formerly \$4.00, \$4.50, \$4.75 and \$5.00. No mail orders. 2.49
- BROKEN LINES AND SAMPLE BOOTS FOR MEN, \$1.99.**
Eight bargain tables of boots in all leathers; broken lines in dongola kid, box kip and gunmetal leathers; light; sample sizes 6 and 8; broken lines sizes 6 to 11. Formerly \$2.50 to \$3.50. Tuesday 1.99
- ALL BAREFOOT SANDALS AND RUNNER SHOES, 49c.**
One and two-buckle tan leather sandals, and tan lotus calf leaced low shoes; reinforced elk and oak tanned leather soles; sizes 5, 8, 9, 10, 11, 12, 13, 1, 2, in the lot. No mail or phone orders. 8.30 Tuesday .49
- WOVEN JAPANESE RUSH SLIPPERS AT 9c.**
300 pairs only, sizes 3 to 7 and 8 to 11. For men and women. Formerly 35c. No mail or phone orders. 8.30 a.m. Tuesday at .9



\$2.50 PIE PLATES, \$1.59.

Silver-plated frame, Guernsey lining. PICNIC SUPPLIES

3250 PIECES ENAMELWARE AT 19c.

Sauce and Steppans, Sink Strainers, Dish Pans, Bait Pans, Double Boilers, Kettles, etc. Regularly 25c to 40c.

The SIMPSON DRUG STORE

"Morison's Tasteless Preparation of Cod Liver Oil, with Hypophosphites and Extract of Malt, 1/2 pint. Tuesday .49

"Becher's Pills, 1/2 pint. Tuesday .49

"Tonidore, a tonic and builder, in tablet form, 1/2 pint. Tuesday .49

"Arnold's Catarrh Cure, for sale in the head, 1/2 pint. Tuesday .49

"Fluid Magnesia, Tuesday, 1/2 pint. Tuesday .49

"Ragbyne, for polishing brass or copper, regularly 1/2 pint. Tuesday .49

"Extract Soap Bark, 1/2 pint. Tuesday .49

"Syrup Hat Cleaner, 1/2 pint. Tuesday .49

"Powdered Ammonia, 1/2 pint. Tuesday .49

"War Tax Extra.

All Ready to Put On Women's Whitewear Half Price

The second lot of overmakes this season, from one of our largest manufacturers, consisting of Women's Nightgowns, Drawers, Corset Covers, Chemises and Combinations, and Children's Gowns, Drawers and Aprons; exceptional choice of the daintiest of styles; all sizes. Tuesday, Half Price.

WOMEN'S 35c TO 75c UNDERWEAR, 25c.

Clearance from regular stock of odds and ends.

VESTS OR COMBINATIONS.
Vests, cotton lisle; plain or fancy yokes; short or no sleeves; sizes 34 short or no sleeves; sizes 34 to 44 bust. Regularly 35c to 75c. Tuesday 25

\$5.00 Trimmed Hats at \$2.65

75 Black Hats, stylishly trimmed; shapes of milan tagel braid or soft hand-made combination of braid, silk and tulle. No two are alike. Regularly \$4.50, \$5.00 and \$6.00. Tuesday 2.65

Cameo Jewelry, \$1.98

60 Cameos, mounted in 10k. gold bar brooches, knife edge bar design; cut setting; 49 real Cameos, set in 10k. gold rings, strong settings, fine cut heads; 75 Cameos, extra large sizes, in gold-filled pendant styles, with 10k. gold necklaces; each with safety bolt ring snap. Regularly selling \$3.50, \$4.00 and \$5.00. Tuesday, 8.30 a.m. 1.98

The Lunch and Palm Rooms are on the 6th floor.

The meals served here are deliciously cooked and the prices moderate. Club breakfasts are especially popular at 15c, 20c, 25c. Served from 8.30 a.m. to 10.30 a.m.

Free Check Room and Telegraph Office in Basement.

Rest Room on Third Floor.

Telephone Booths on First, Second and Third Floors.

Men's Straw Hats

Regularly \$1.50. Tuesday at .79

Men's Straw Hats, negligence style. Regularly \$1.50 and \$2.00. Tuesday .85

Men's Furnishings

Men's Merino Underwear, all sizes to 44, in shirts and drawers. Regularly 50c. Tuesday, garment .38

Men's Neglige Shirts, laundered cuffs and coat style, all sizes. Regularly 59c and 75c. Tuesday, each .44

Men's Night Robes, white with colored edging, all sizes. Regularly \$1.00. Tuesday .78

Boys' Merino Shirts and Drawers, all sizes, natural color. Regularly 44c. Tuesday, garment .29

Tourist Trunks

32, 34 and 36 in., Tuesday .500

Canvas Trunks, \$4.95—32, 34, 36 and 40 inches.

MORE OF THE Madeira Linens

This second lot of the \$10,000 shipment has just been unpacked to replenish many of the patterns and sets that have been broken by the tremendous selling of the past few days.

There were in all 24,792 pieces in the shipment, every one genuine hand-worked, which makes the values the greatest we have ever seen.

THESE FOR TUESDAY.

- 24-inch Centres; beautifully worked. Each .98
- Handkerchief Sachets, the daintiest, prettiest imaginable. Each .49
- 6-inch Tumbler Doilies. Each .25
- 10-inch Plate Doilies. Each .49
- Plain Rose Scalloped Doilies; all wanted sizes. Each, from .10
- Centrepieces, 65c and more.
- Tray Cloths, large and small, oval and square, 25c and more.
- Scarfs, \$1.00 and more.
- Lines Dept., 4th Floor.

August Sale of Hosiery

Women's Silk Ankle Hose, black, white, beige, gray, sand, Copenhagen and Palm Beach. Tuesday .49

Women's Silk Ankle Hose, colored tops; colors in tan, bronze, white and black, sand and gray. Tuesday, 39c; 3 pairs .110

Women's Black and White Lisle Thread Hose, "seconds". Regularly 35c. Tuesday .15

Women's Black and Colored Lisle Thread Hose. Regularly 35c and 39c. Tuesday .29

Women's Outsize Lisle Thread Hose, black. Tuesday .15

Women's "Penangle" Black Cashmere Hose, "seconds". Tuesday 19c; 3 pairs .55

Women's "Llama" Black English Cashmere Hose .39

Children's Ribbed Black Cotton Hose; sizes 6 to 10. Tuesday .11

Children's Mercerized Lisle Stockings; sizes 4 to 6 1/2. Tuesday, 19c; 3 pairs .55

Men's "Penangle" Black Cashmere Socks, "seconds." Tuesday, 19c; 3 pairs .55

Men's Cashmere Socks, black, English maker's sample range. Regularly 40c to 45c. Tuesday .25

Hot Weather Dresses \$4.95

FORMERLY SOLD AT \$7.50 TO \$9.00.

Just 125 New Tub Dresses, in pretty styles; crepes, voiles and muslins, in figured, striped or floral designs.

A TUESDAY SPECIAL.

Advance Showing of Fall Suits, the smartest styles and newest weaves, \$15.00, \$17.50, \$20.00 and \$25.00.

100 New Serge Suits, in black or navy; several styles, showing the newest lengths, pleats and belts. Regularly \$16.50. Tuesday 12.50

Wash Skirts for Stout Women, \$1.50. Good rep; plain gored style, with pockets and belt.

The Groceries

Telephone Direct to Department, Adelaide 6100.

- One car Standard Granulated Sugar, in 50-lb. cotton bags, per bag 1.33
- 400 lbs. Finest Canned Tomatoes, 3 tins. 1.28
- Ogilvie's Royal Household Flour, quarter-bag 21
- Magic Baking Powder, 1-lb. tin 21
- California Seeded Raisins, regularly 12c pack .19
- Choice Picnic Ham, 4 to 8 lbs. each, per lb. 14
- Pure Lard, 5-lb. ball, per lb. 23
- Finest Creamery Butter, per lb. 23
- Choice Red Salmon, 2 tins 23
- Quaker Oats, large package 23
- 500 packages Ivory Brand Suits, 3 packages 23
- Shirley's Marmalade, 2-lb. jar 23
- 300 lbs. Fresh Fig Bar Biscuits, 2 lbs. 23
- Clark's Potted Meats, assorted, 5 tins 23
- Cowan's Cocoa, 4-lb. tin 23
- Paris Fats, per tin 23
- Heinz Pickles, picnic size, bottle 14
- St. Charles Malt, per tin 23
- Blue Bell Jelly Powder, 2 packages 23
- Finest Kipped Herring, per tin 23
- Red Wing Grape Juice, bottle 23

FRESH CANDIES.

1000 lbs. Assorted Chocolates, Creams, fruit flavors, per lb. 55

1000 lbs. Cream Caramels, per lb. 55

500 lbs. Cowan's Chocolate Cream Bars, per lb. 23

(Discontinued).

The Robert Simpson Company, Limited