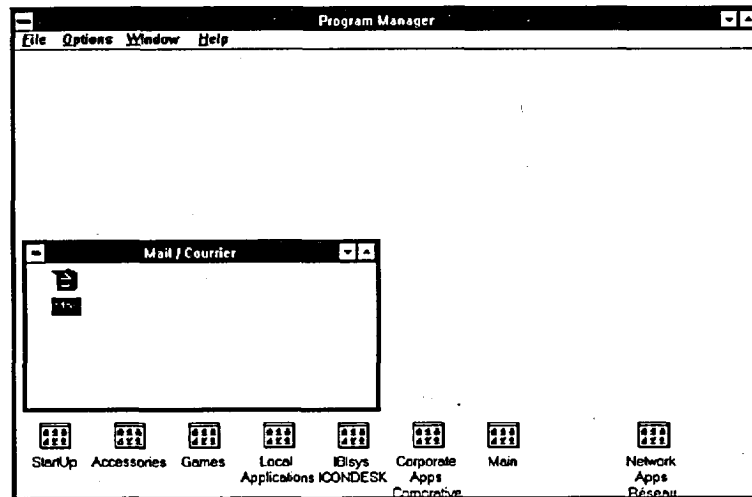


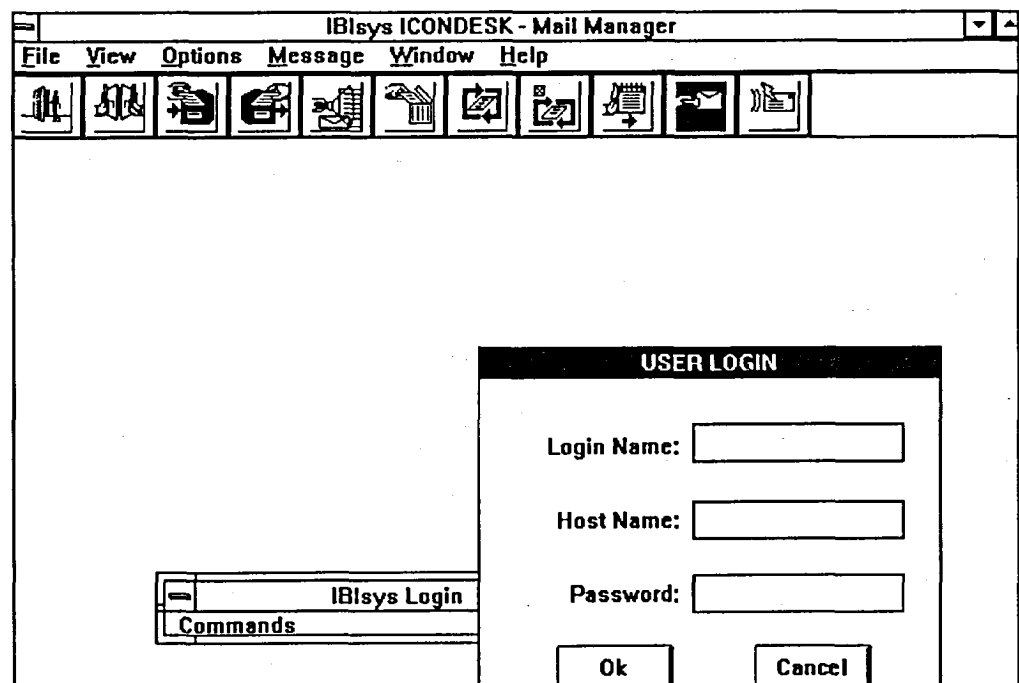
**Method**

To log in to the ICONDESK:



*Figure 2: Mail/Courier Group Window in Windows*

1. Position the mouse pointer on the MAIL/COURRIER group.
2. Double-click to restore the window.
3. Double-click the MAIL icon to start ICONDESK and display the login dialog box.



*Figure 3: ICONDESK USER LOGIN dialog box*