

W. D. PETTIGREW & CO.

WHOLESALE

—DEALERS IN—

Plaster of Paris,
Plasterer's Hair,
Wheelbarrows

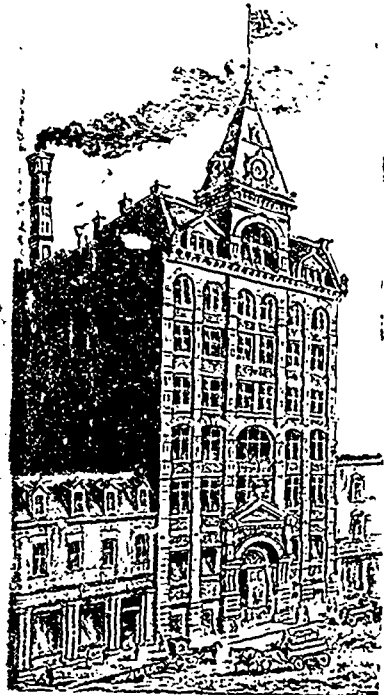
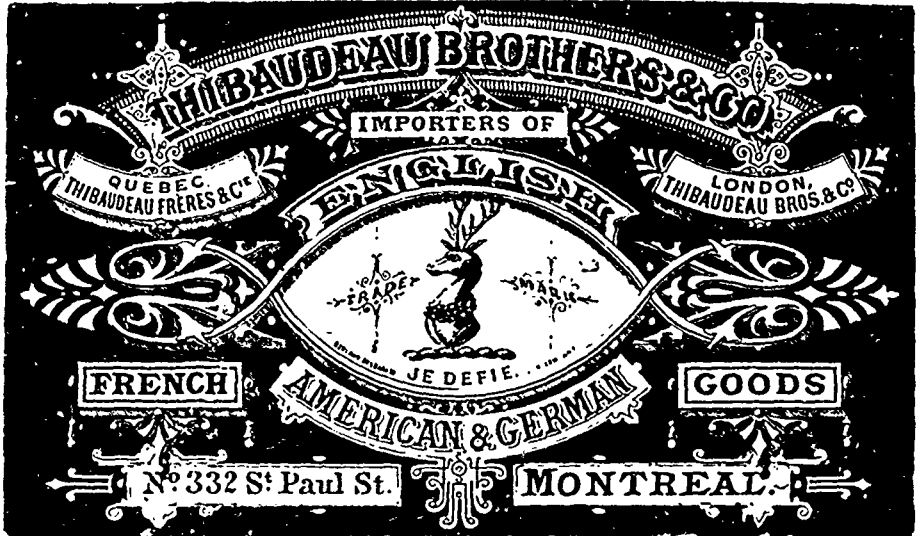
SEND FOR PRICES TO

628 Main Street,
WINNIPEG.

STEWART HOUSE

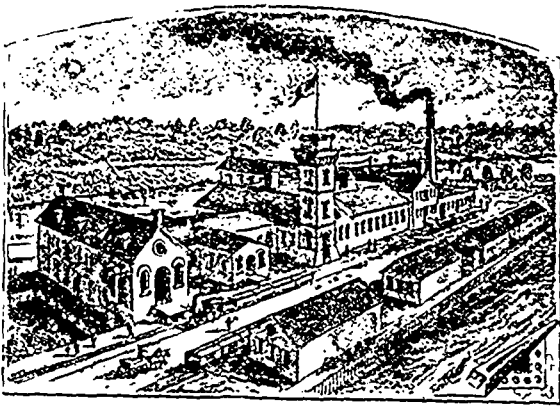
COR. MAIN & ELLIS STS., MANITOU, MAN.
First-Class in every respect! Re-fitted! Re-furnished
Good Table! Good Rooms! Three best Sample Rooms
in the Province.

ROUNTREE & CONNOR, Proprietors.



J. C. WILSON & CO.

Fine Jute Manillas. (Established 1870) Rope Manillas.



Lachute Paper Mills, LACHUTE, P.Q.
(CAPACITY 7 TONS DAILY)

Paper Makers

MANUFACTURERS & PRINTERS
—OF—
Patent Machine
Paper Bags, Flour Sacks,
Envelopes, Shipping Tags,
Toilet Paper and
Folding Paper Boxes.

—WHOLESALE—
MANUFACTURING STATIONERS.
Lithographers and Printers.

Our New Warehouse & Factory, Montreal (60,000 Square Feet of Floor Room) 698, 700 and 702 Craig Street, **MONTREAL**

G. F. STEPHENS & CO.

—MANUFACTURERS OF—

- Stephens' Pure Liquid Colors**—Various Shades for Interior and Exterior House Painting.
- Stephens' Prepared Carriage Paints**—In Scarlet, Black and Maroon. These Paints dry with a Rich Gloss and do not require Varnishing.
- Stephens' Elastic Enamel**—For Household Decorations such as Tables, Fancy Chairs, &c., in a large number of delicate shades.
- Stephens' Pure Oxide Paints**—(Almost everlasting)—For Elevators, Granaries, Roofs and all Rough Surfaces exposed to the Weather.

—IMPORTERS AND JOBBERS OF—

- Window Glass**—Ordinary Glazing and Crystal Sheet. Single and Double Strength.
- Heavy Polished Plate**—Sizes in Stock from 44 to 96 inches Wide.
- Ornamental Glass**—In almost Endless Variety.
- A full Stock of Painters' Supplies including Dry Colors, White Lead, Varnish, Brushes, Etc. Artists' Oil Colors and Brushes.**
- Plaster Paris, Plasterer's Hair, Portland Cement, Rosin, Pitch, Etc.**

MARKET STREET EAST, WINNIPEG.