

# Canadian General Electric Company, Limited

## 14-16 KING STREET EAST

MONTREAL  
HALIFAX  
OTTAWA

TORONTO  
**Canada.**

WINNIPEG  
VANCOUVER  
ROSSLAND

MANUFACTURERS OF

## Electrical Apparatus of All Kinds

**COMPLETE ELECTRICAL INSTALLATIONS FOR ALL PURPOSES**

### FACTORY LOCATIONS.

The following Canadian municipalities are offering inducements to secure manufacturing establishments. Inquiries should be addressed to the Mayor, Town Clerk or Board of Trade of the respective cities.

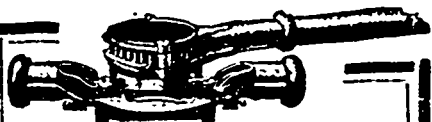
Barrie, Ont.

Hamilton, Ont.

Peterborough, Ont.

Regina, N.W.T.

Sherbrooke, Que.



### ARMSTRONG'S RATCHET ATTACHMENT

fits all GENUINE Armstrong Die Stocks. It is invaluable in corners, against walls and ceilings, or wherever the handles of a die stock cannot be turned.

It is a well-made tool and the cost is moderate.

Circulars and prices on application

THE ARMSTRONG MFG. CO.  
281 Knowlton St., BRIDGEPORT, CONN.  
Chicago Office, 23 S. Canal St.

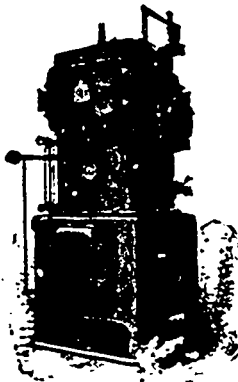
### THE COST OF LUBRICATION

Is The Cost of Lubricants Plus The Cost of The Friction Accompanying Their Use

Friction is always at work, resisting motion, absorbing power, producing wear, even though it may not become excessive. To reduce friction to a minimum, Dixon's Flake Graphite is used, because it is the only successful lubricant that perfects the friction surfaces and actually prevents their contact. That is why the cost of friction is reduced when Dixon's Flake Graphite is used—That is why the cost of lubrication is reduced. Write for free sample No. C-33.

**JOSEPH DIXON CRUCIBLE CO., Jersey City, N.J.**

### WEBSTER VACUUM FEED WATER HEATER PURIFIER AND FILTER



Over two million horse-power already in use. That is the first argument in favor of Webster Heaters. But what brought so many in use?

Their great saving in heat. That is the unanswerable argument. They utilize all available drips suitable for feed water; they save fresh water, stop back pressure, and they use the least steam.

**DARLING BROTHERS LIMITED**

Head Office and Works—MONTREAL

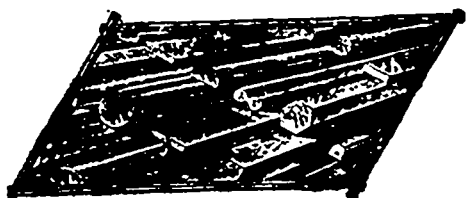
Branch Offices: TORONTO WINNIPEG VANCOUVER

## UNION DRAWN STEEL CO., Limited

MANUFACTURERS OF

### Bright Finished Steel Shafting and Shapes

Send for Price List



LARGE STOCK OF

Rounds,  $\frac{1}{8}$ " to 6"  
Squares,  $\frac{1}{4}$ " to 2 $\frac{1}{2}$ "

Flats,  $\frac{1}{8}$ " x  $\frac{1}{4}$ " to 3" x 12"  
Hexagons,  $\frac{1}{4}$ " to 2"

Office and Works

**HAMILTON, Canada**