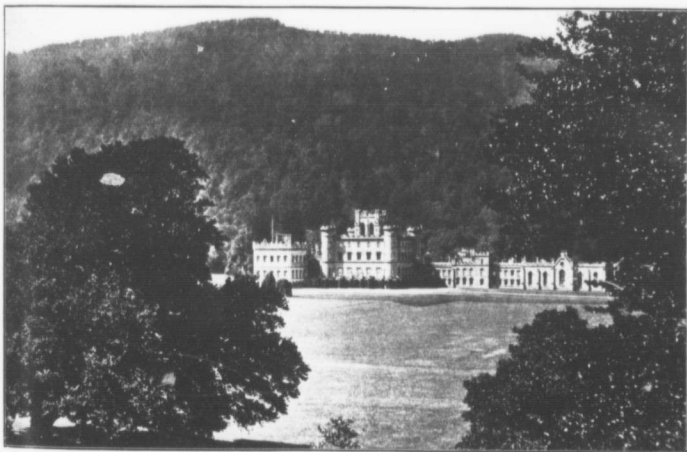


**DUMBARTON CASTLE.**—This historic stronghold is in front of the town, on the point of the peninsula between the river Leven and the Clyde. There is little of castle, but rather some barracks and other buildings, on a double peaked precipitous rock, which once must have been nearly impregnable, though it was scaled and captured by Crawford and 100 men in 1571. This summit where is an ancient dungeon and some remains, probably Roman, commands a splendid view, and is reached by a narrow stone stairway, defended by a portcullis, up the cleft between the peaks. The rock is basalt, springing abruptly out of the plain. Only a few artillerymen now guard the barracks and magazine. It is maintained as a national fortress by the Act of Union of 1707. The pier was built in 1874.



**TAYMOUTH CASTLE.**—This is the Highland seat of the Earls of Breadalbane, whose estates are said to extend unbroken for a hundred miles, from here to the Sound of Mull. The original Castle was built in 1580 by Sir Colin Campbell, of Lochawe, but, except a small portion of this preserved in the west wing, the existing building is all of the present century. It stands about a mile from Kenmore. The late Queen and Prince Consort were entertained here on their first visit to Scotland in 1842 in a manner which made a deep impression upon their royal guests.