

MARCH 22, 1917  
it?  
1?  
?  
osts so  
cheap,  
e times  
gh the  
ve  
U  
s. The  
use cost  
vice.  
will last  
n in will.  
t to save  
TIE  
BANDS

PUBLISHED EVERY WEEK. \$1.50 PER YEAR.

# THE FARMER'S ADVOCATE

AND HOME MAGAZINE

PERSEVERE  
SUCCEED  
FOUNDED 1877

\* AGRICULTURE, STOCK, DAIRY, POULTRY, HORTICULTURE, VETERINARY, HOME CIRCLE. \*

Entered in accordance with the Copyright Act of 1875.  
LONDON, ONTARIO, MARCH 29, 1917. No. 1279

Dominion Animal Husbandry  
Exhibitor

## Frost Ornamental Fences

### Present a Good Front

Angle Iron and Woven Wire

NEAT LOOKING

PRICES REASONABLE

### Woven Wire Lawn Fences

(Made in Three Styles—Standard Heights)

Perfectly Woven Fabric—Only Automatic Loom in Canada

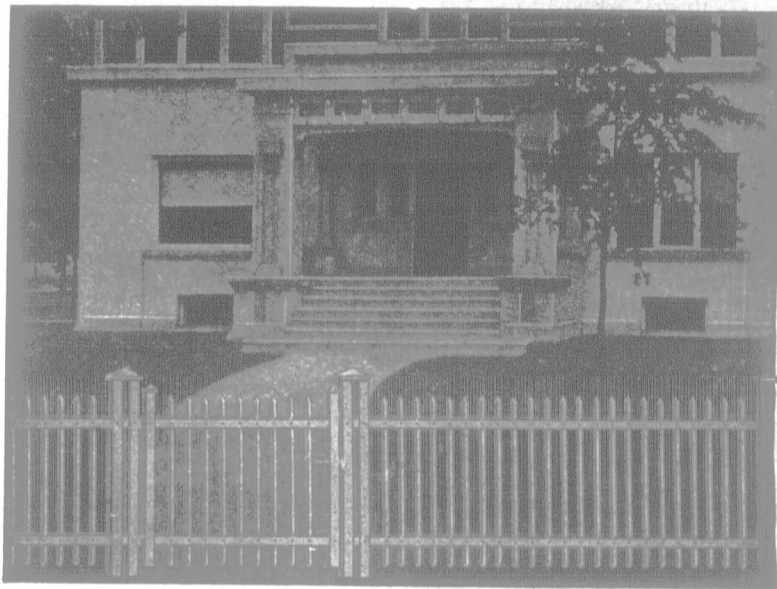
The illustration below is Style "S." There is also Style "L," with the shorter bowed stays omitted, and Style "LP," with stays close all the way to the top.

FROST WOVEN WIRE LAWN FENCES can be built on iron posts with pipe top rail or on wooden posts with scantling at top. We use heavily-galvanized material, as the painted fence soon shows cracks and peelings; rust soon follows. The wire in these fences, like all our material, is drawn and galvanized in our own mills, so we know its quality.

Standard heights: 3, 3½ and 4 feet. Bowed tops are even. The uprights of No. 9 are deeply crimped and securely held in place by a reverse twist of the two No. 13 twisted lateral wires. To prevent the bottom of fence from becoming loose or "pulled out" the uprights are alternately crimped one way, then the other.

Gates are made to match any style or height of iron or woven wire lawn fence.

Flower border, heights 16 inches and 22 inches, same construction as Style "L."



### Made From Angles— Strength and Lightness Combined

Being constructed from angles, the fence is light, but stronger than round or square bars of ½-inch or ¾-inch thickness. Quite massive in appearance, but much lower in cost than the ordinary types of iron fences, on account of its lesser weight. FROST ANGLE PICKET FENCE is durable and neat.

MATERIAL IN DETAIL: Horizontal rails, 2-inch angles, ½-inch thick. Pickets, ¾-inch angles, ½-inch thick, fastened to horizontals through a "V" slot and securely rivetted. Fence is practically rigid. Six-inch square posts at ends and gates. These 6-inch posts are made from four of the 2-inch horizontals fastened 2 inches apart by 2-inch steel plates, top and bottom, strongly rivetted. Line posts are made of two horizontals fastened closely, making a 2-inch square post. The made-up panels, 8 feet long, are tightly bolted to line and end posts.

Send in a rough sketch of any property you contemplate fencing, and we shall be glad to give you an estimate of the cost of whatever style you prefer. We have reliable agents in almost every district.

Get a catalogue with detailed information.

**Frost Steel and Wire Co., Ltd.**  
Hamilton, Canada

