

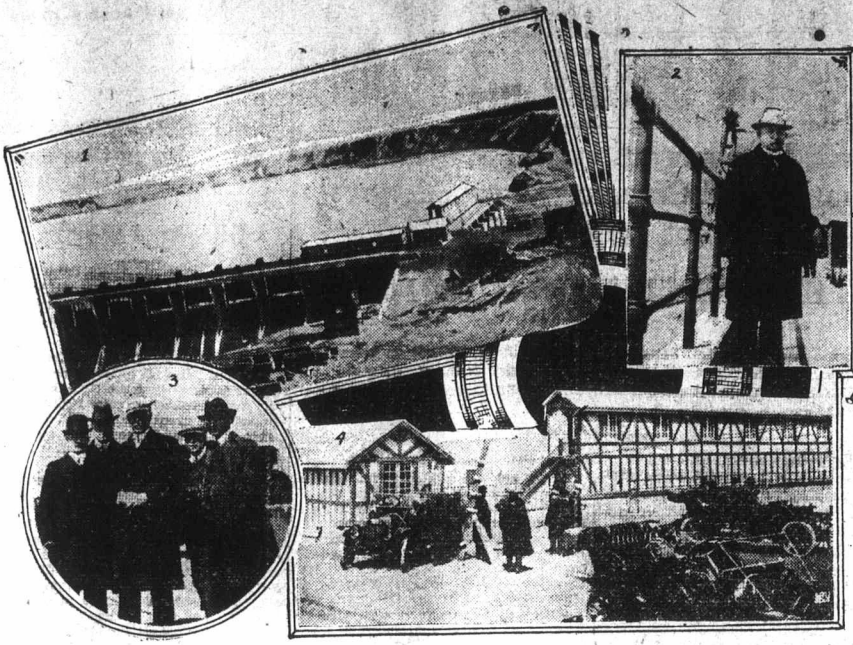
C.P.R. HUGE UNDERTAKING HAS BEEN COMPLETED

Bassano Dam For Irrigation of dry Lands of Alberta One of Greatest Engineering Feats Accomplished In Dominion

The construction of the huge Bassano dam across the famous Bow River, 22 miles east of Calgary, by the Canadian Pacific Railway Company, has been completed. As a result of its opening 4 million acres of territory...

SHIPPING AND TRANSPORTATION NEWS

THE NEW BASSANO DAM



(1) Bow River and the Great Bassano Dam. (2) Sir Thomas Shaughnessy at the opening of the dam. (3) J. B. Dennis assisting at the President of the C. P. R., and Mr. G. W. Bury, Vice-President, at the opening. (4) Officials gathering at the head gates of the dam for the opening ceremony.

SATURDAY, JUNE 13th, 1914.

Table with 2 columns: To, From. Lists shipping routes and times for various destinations like Buenos Ayres, London, etc.

Weather Forecast. Lower Lakes and Georgian Bay—Light to moderate winds; fine and comparatively cool.

PORT OF MONTREAL. Arrivals. No ocean arrivals this morning.

Departures. Ausonia, Canada Line, for Southampton and London, passengers and cargo. Sailed daybreak, June 13th.

Quebec to Montreal. Long Point, 5—Clear, calm. In 6:15 a.m. Quebec, 3:00 a.m. Accommodation, 3:20 a.m. Three Rivers, 5:30 a.m.

West of Montreal. Lachine, 3—Clear, west. Eastward 8:00 a.m. Morley, 7:30 a.m. tug and tow, 7:30 a.m. Gladys, Eastward yesterday 10:00 p.m.

ALLAN LINE STEAMERS. Calgarian, from Liverpool, for Quebec, arrived at Quebec 9:45 a.m. June 12th.

MARINE ITEMS. The steamer Kendall Castle, which was recently damaged by ice in the Gulf, was repaired at the Erie Basin, New York, and has arrived at Sydney, to resume her place in the coal carrying trade.

TO MOUNTAIN LAKES AND SEAS. At this season of the year many talk of the advantage of the delightful sunshine and balmy air to go to the country, to mountains, lakes, rivers, and seashore.

C. P. R. AND ALLAN LINE AMALGAMATE. A Liverpool despatch states that next month the offices of the Allan Line and the Canadian Pacific Railway Company are to be amalgamated.

INWARD BOUND STEAMERS REPORTED. Kwara left Sydney yesterday morning for Montreal. Cardiff Hall from Buenos Aires left Sydney yesterday morning for Montreal.

CANADA STEAMSHIP LINES. Location of steamers at 6:15 p.m. June 12th, 1914. Canadian—Montreal, loading for Washburn.

St. Lawrence. In connection with above Canadian Pacific will run special trains, leave Windsor Station to-day at 12:50 p.m., and every twenty minutes until 2:15 p.m., and on Monday at 1:10 p.m., 1:30 p.m., 1:50 p.m., and 2:15 p.m., returning special will leave immediately after last race. Tickets, single 15c, return 25c, on sale at Ticket Offices.

Montreal & Southern Counties Railway Company. TIME TABLE, MONTREAL & ST. CESAIRE. 31 Miles by Electric Car.

News of Railroads

SPECIAL TRAINS TO MOVE MILITIA. Twenty special Grand Trunk trains will be busy this week-end transporting the militia regiments from the various parts of Ontario and Quebec to the big camp at Petawawa.

MAJOR DAVID SEATH, Secretary of the Montreal Harbour Commissioners.

C. P. R. DONATE CADTSHIPS. The Canadian Pacific Railway Company have undertaken to provide ten scholarships, tenable for two years each on the Mercantile Marine Service Association's cadet ship Conway, and such winners of these scholarships will be marked for employment later on in the steamship services of the C. P. R. Company.

INWARD BOUND STEAMERS REPORTED. Kwara left Sydney yesterday morning for Montreal. Cardiff Hall from Buenos Aires left Sydney yesterday morning for Montreal.

CANADA STEAMSHIP LINES. Location of steamers at 6:15 p.m. June 12th, 1914. Canadian—Montreal, loading for Washburn.

St. Lawrence. In connection with above Canadian Pacific will run special trains, leave Windsor Station to-day at 12:50 p.m., and every twenty minutes until 2:15 p.m., and on Monday at 1:10 p.m., 1:30 p.m., 1:50 p.m., and 2:15 p.m., returning special will leave immediately after last race. Tickets, single 15c, return 25c, on sale at Ticket Offices.

A TRAIN DE LUXE. The Grand Trunk "International Limited," the premier train of Canada is endorsed by everybody who has ever had the experience of riding on it. It leaves Montreal at 9 a.m., every day in the year, arriving Toronto at 4:30 p.m., Hamilton 5:41 p.m., London 7:45 p.m., Detroit, 9:55 p.m., and arrives Chicago 8 a.m. following morning.

CHICAGO VIA C.P.R. NEW FAST EXPRESS SERVICE. MONTREAL—TORONTO—DETROIT—CHICAGO. Twenty-three hours of solid comfort—Compartments—Buffet—Library—Observation Cars—Standard and Tourist Sleepers—Dining Cars on "The Canadian" via Canadian Pacific Windsor and Michigan.

ALLAN ROYAL MAIL LINE. Rockpool, bulk cargo of grain for Avonmouth, England, general cargo for Bristol. Ida, Austro-Americana, from Norfolk, Va. Sailed June 14th. H. & A. Allan, agents.

Montreal & Southern Counties Railway Company. TIME TABLE, MONTREAL & ST. CESAIRE. 31 Miles by Electric Car. Leaves Montreal for St. Cesaire, A.M. 6:20. P.M. 6:20. P.M. 6:20. P.M. 6:20.

Railways

CANADIAN PACIFIC. DORVAL RACES. June 13. Lv. Windsor St., 12:50 p.m., and every 20 minutes until 2:15 p.m.

HOMESEKERS' EXCURSIONS. Every Tuesday Until October 27. Tickets good for Sixty Days. Winnipeg, Edmonton and Int. Stations, 9:45 a.m. 9:45 p.m. Week-End Tickets Now on Sale.

NEW SERVICE TO CHICAGO. NOW IN EFFECT. Lv. Windsor St., 8:45 a.m., 10:00 p.m. Arr. Chicago, 7:45 a.m., 9:05 p.m.

GRAND TRUNK RAILWAY SYSTEM. THE "INTERNATIONAL LIMITED." Canada's Finest and Fastest Train. Leaves Montreal 9 a.m., arrives Toronto 4:30 p.m., Detroit 9:55 p.m., Chicago 8 a.m. daily.

NIGHT EXPRESS. Leaves Montreal 10:30 p.m., arrives Toronto 7:30 a.m., Detroit 1:53 p.m., Chicago 9:25 p.m. daily.

THE LAKE AND RAIL ROUTE TO WESTERN CANADA. From Toronto, 11:15 a.m. Mondays, Wednesdays, and Saturdays, via Grand Trunk to Sarnia, Northern Navigation Co. to Port William, and Grand Trunk Pacific to points in Western Canada.

STRAINSHIPS. THE ATLANTIC ROYALS. Montreal-Bristol ROYAL EDWARD ROYAL GEORGE. Excellent Accommodation and Cuisine. ORCHESTRA PLAYS DAILY.

DONALDSON LINE. Glasgow Passenger and Freight Service. From Glasgow. From Montreal May 30.....Lettitia.....June 13th June 6.....Cassandra.....June 20th June 13.....Saturna.....June 27th

THE ROBERT REFORM CO., Limited. General Agents, 20 Hospital Street, Steeplechase Branch, 488 St. James Street, Uptown Agency, 530 St. Catherine W.

CUNARD LINE. Canadian Service. From Southampton. From Montreal June 4.....Andania.....June 29 July 2.....Ausonia.....July 19

THE ROBERT REFORM CO., Limited. General Agents, 20 Hospital Street, Steeplechase Branch, 488 St. James Street, Uptown Agency, 530 St. Catherine W.

Start Your Vacation on the Cool Waters of the St. Lawrence. Niagara to the Sea. Daily service, Toronto, Thousand Islands, St. Lawrence Rapids, and Saguenay River Points.

North Shore Route. Montreal - Pictou. Balling for freight for Glasgow, Southampton, Charlottetown and Pictou.

New York - Quebec. Four trips during season: First sailing from New York, July 4th, from Quebec, July 14th.

STEAMSHIP SPECIALS. Connecting with R.M.S. Calgarian sailing from Quebec, Thursday, June 18 of First Class Coaches and Standard Sleepers will leave Windsor Street Station, at 8:30 p.m. Wednesday June 17. Passenger and Mail Special of First-Class Coaches, Diner and Parlor Cars will leave Windsor Street Station at 10 a.m. Thursday, June 18. Both trains will run direct to ship's side.

FRED W. G. JOHNSON INSURANCE AND REAL ESTATE. 811 Board of Trade Building. Tel. Main 7847. Your patronage solicited.

SURPLUS EARNING

While many lines of business are today marking time, Canada Life is each year exceeding all previous records the earning of surplus. Its surplus is now well \$6,000,000.

IN CHOOSING A LIFE COMPANY it is well to be assured of dividends. Everything is available for that in the

CANADA LIFE ASSURANCE COMPANY. AN IDEAL INCOME can be secured to your Beneficiary. Absolute Security by Insuring with Union Mutual Life Insurance Company.

MONTHLY INCOME PLAN. Backed by a deposit of \$1,688,892.65 with the DOMINION GOVERNMENT. For full information regarding the monthly income plan, write to Walter I. Joseph, Manager, Suite 502 McGill Bldg., Montreal.

The Federal Life Assurance Company of Canada. posted up another record year in 1913. of the most gratifying results was that Company's earnings showed an increase over 65% on the earnings of 1912.

THE BRITISH CANADIAN REALTY & INVESTMENT Co., Limited. Real Estate, Timber Limits, Farms and Coal Lands, Water Power.

J. T. BETHUNE, Managing Director. 605-606 TRANSPORTATION BLDG. Cable Address: BRITISHCAN. Codes: Western Union & Premier Bentl

Guardian Assurance Co. LIMITED. ESTABLISHED 1837. Assets exceed \$34,000,000. Head Office for Canada: Guardian Building, Montreal.

THE PROVIDENT, ACCIDENT & GUARANTEE COMPANY. Accident, Health, Employer's and Public Liability, Burglary, Plate-Glass, Fidelity, Bonds, Contract Bonds, Automobile.

THE LONDON & LANCASHIRE LIFE & GENERAL ASSURANCE ASSOCIATION, LIMITED. Offer Liberal Contracts to Capable Men. GOOD OPPORTUNITIES FOR MEN TO BUILD UP A PERMANENT CONNECTION.

UNION ASSURANCE SOCIETY LIMITED, OF LONDON, ENGLAND. Fire Insurance since A.D. 1741

Canada Branch, Montreal: T. L. MORRISSEY, Resident Manager. North-West Branch, Winnipeg: THOS. BRUCE, Branch Manager.

GET THE BEST. Do not pace your Insurance policy until you have learned all about the Guaranteed Investment Plan offered by The Manufacturers Life Insurance Company.

North American Life Assurance Co. "Solid as the Continent."

For Information as to Agency Openings Write to the Home Office - TORONTO

FRED W. G. JOHNSON INSURANCE AND REAL ESTATE. 811 Board of Trade Building. Tel. Main 7847. Your patronage solicited.