

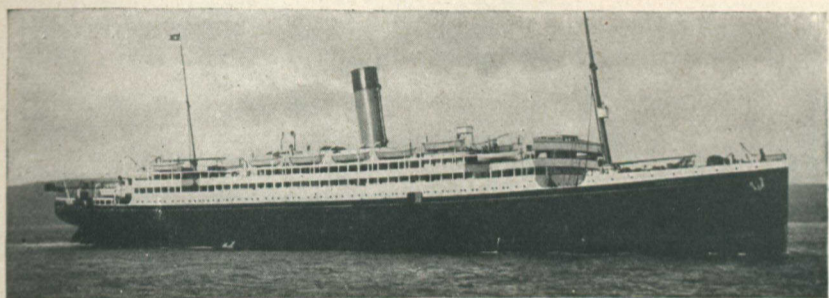


The Pioneer Route to MUSKOKA

AND THE ONLY LINE REACHING ALL THE PRINCIPAL TOURIST RESORTS OF ONTARIO.

For Descriptive and Fully Illustrated Literature Regarding:---
MUSKOKA, LAKE OF BAYS, TEMAGAMI, ALGONQUIN PARK, GEORGIAN BAY, KAWARTHA LAKES, ORILLIA AND LAKE COUCHICHING, LAKE HURON, Etc., address---

I. D. McDONALD, D.P.A. Toronto J. QUINLAN, D.P.A. Montreal



WHITE-STAR DOMINION CANADIAN SERVICE ROYAL MAIL STEAMERS

1910 WEEKLY SAILINGS 1910

R. M. S. "LAURENTIC"	R. M. S. "MEGANTIC"
14,892 Tons Triple Screw	14,878 Tons Twin Screw

The largest and most modern Steamers on the St. Lawrence route

H. G. THORLEY, Passenger Agent - - 41 King Street East, TORONTO

The Hudson River Route
To New York
Canadian Pacific Ry.—New York Central
Sleepers Night time—Parlor Cars Day time.
Coaches most trains, Dining Service Meal time.

Through Sleepers at 5.20 p.m. daily and 7.10 p.m. daily, except Sunday. Trains at 9.30 a.m. and 3.45 p.m. (daily except Sunday) make direct connections at Buffalo for New York.

Railroad and Pullman tickets can be secured at Canadian Pacific Railway Ticket Offices, or at New York Central Lines City Ticket Office, 80 Yonge Street.

Frank C. Foy, Canadian Passenger Agent
Phone, Main 4361 80 Yonge Street

NEW YORK CENTRAL LINES
"For The Public Service"

TOURIST AND SUMMER RESORT Information Bureau

WHETHER you are a subscriber to the CANADIAN COURIER or not, our Information Bureau is at your service. On application we will furnish information concerning Summer Resorts, Summer Hotels and Boarding Houses, also Trips by Land and Water to any part of the Dominion. Address

INFORMATION BUREAU, COURIER PRESS, Ltd.
12 WELLINGTON ST. EAST, TORONTO, ONT.

Please enclose stamped envelope for reply.

The "ROYAL" Line to Europe

Canadian Northern Steamships Limited

has established a new speed record between Canada and Great Britain, the "Royal Edward" having completed the trip from Port to Port in

LESS THAN SIX DAYS

The twin ships, the "Royal Edward" and the "Royal George" are the fastest triple screw turbine boats in the Canadian service. The British port is Bristol (two hours nearer London than Liverpool). Special Royal Line Trains within 110 minutes of London. The steamers are driven by the newest type of turbine engines, insuring a maximum of speed and minimum of vibration. Their equipment is the finest ever seen in the St. Lawrence—large staterooms, spacious social apartments, sheltered promenade decks, artistic furnishings, perfect service and ventilation by thermo-tank system.

SAILING FORTNIGHTLY FROM
MONTREAL and QUEBEC to BRISTOL

For Full Particulars, Rates, Booklets, Etc., apply Local Agent, Wm. Phillips, Acting Traffic Manager, Canadian Northern Steamships Limited, Toronto, Canada; Guy Tombs, Acting General Passenger Agent, Montreal, or Wm. Stapleton, General Agent, Winnipeg.

ARE YOU

on the list for a copy of

"Tours to Summer Haunts"

describing

Canadian Tours

to

Canadian Resorts

BY THE SEA

in Quebec, New Brunswick, Nova Scotia, Prince Edward Island.

Write Advertising Dept Intercolonial Railway, Moncton, N. B.



Special Steamboat Express

Will leave Toronto at 1.00 p.m. on sailing days running direct to wharf at Owen Sound in connection with

CANADIAN PACIFIC RAILWAY GREAT LAKES SERVICE

Monday	S.S. "Athabasca"
Tuesday	S.S. "Keewatin"
Wednesday	S.S. "Alberta"
Thursday	S.S. "Manitoba"
Saturday	S.S. "Assiniboia"

Sailing from Owen Sound for Soo, Port Arthur, Fort William. Direct connection for Winnipeg, Western Canada, Pacific Coast, Japan, China, Australia, etc.

ASK ANY AGENT FOR PARTICULARS OR WRITE TO

R. L. Thompson, District Passenger Agent, Toronto