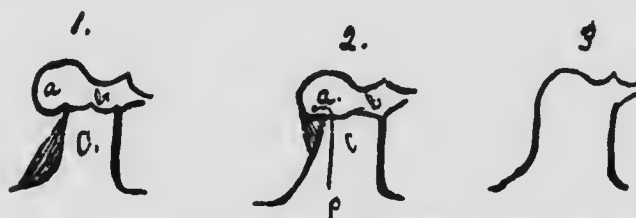


above. It shows how much longer a line drawn from without to a point in the course of the nerve in front of the meatus is than a similar line drawn behind the meatus.

Ninth exercise. The work of this exercise consists in performing a modified Stacke. The meatus is first enlarged from without, a funnel-shaped opening resulting. This gives more room to proceed conveniently with the Stacke which has been described in the seventh exercise.

The shaded lines in Fig. 11 (1) show the place where the chiseling is begun. The funnel shape as seen in Fig. 12 (2) then results and the shaded lines here show where the



a. Antrum. b. Tympanum. c. Meatus. p. Probe.

Fig. 11. Diagram, looking down from above showing steps of enlarging opening in the modified Stacke.

Stacke is to be begun. Every stroke with the chisel must be preceded by the use of the probe. Fig. 11 (3) shows the opening that results; this may be further worked out into the complete opening.

The real Zanzal operation consists in working from without and enlarging the funnel-shaped meatus until the antrum is entered, without resorting to the method after Stacke. Fig. 12 (1). When the antrum is large it will be soon entered and the bridge at the point b in Fig. 12 (2) will be left. Shaded lines show the procedure of chiseling.