

THE

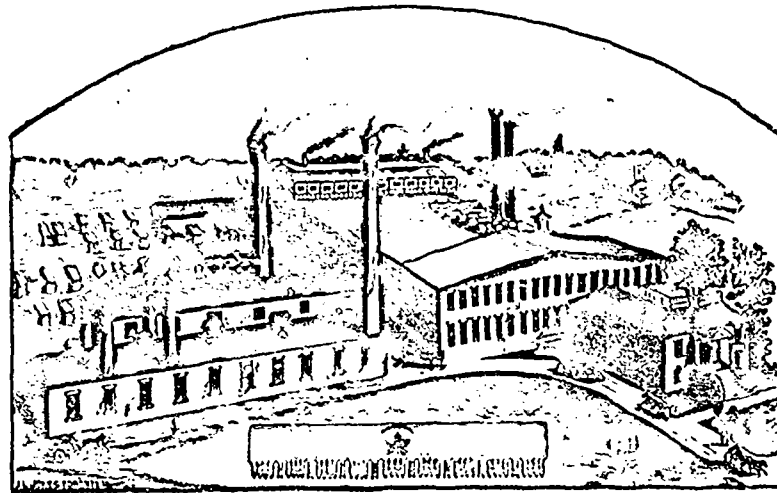
MAPLE LEAF SAW WORKS



Shurly & Dietrich GALT, ONT

Manufacturers of

- CIRCULAR SAWS
- GANG SAWS
- MILL SAWS
- BAND SAWS
- CROSS-CUT SAWS



Manufacturers of

- HAND SAWS
- BUCK SAWS
- PLASTERING TROWELS
- BUTCHER SAWS
- STRAW KNIVES, &c.



GROUND THIN ON BACK
 Save Labor Save Gumming
 Save Time Save Files

This Saw Stands Without a Rival

AND IS THE

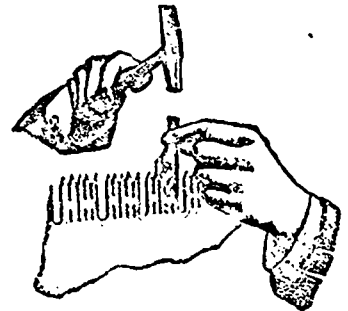
FASTEST CUTTING SAW IN THE WORD!

Its Superiority consists in its Excellent Temper. It is made of "Razor Steel," which is the finest ever used in the manufacture of Saws. We have the sole control of this steel. It is tempered by our secret process, which process gives a keener cutting edge and a toughness to the steel which no other process can approach.

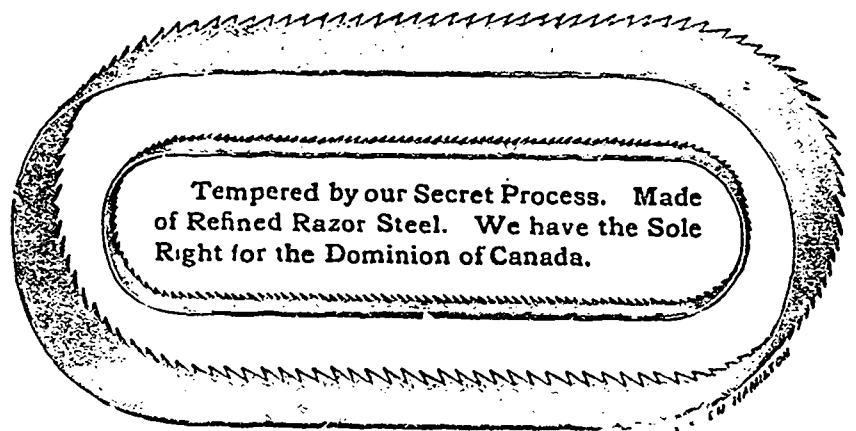
Maple Leaf Saw Set

MANUFACTURED BY
SHURLY & DIETRICH, Galt, Ont.

Directions.—Place the set on the point of tooth, as shown in the accompanying cut, and strike a very light blow with a tack hammer. If you require more set file the tooth with more level.
 If you follow directions you cannot make a mistake. Be sure and not strike too hard a blow, and it will set the hardest saw. On receipt of 40 cents we will send one by mail.



We are the only manufacturers in the world who export Saws in large quantities to the United States.



Tempered by our Secret Process. Made of Refined Razor Steel. We have the Sole Right for the Dominion of Canada.

We Manufacture

HIGH GRADE BAND SAWS

Of All Widths and Lengths.

These Saws are made of Refined Swedish Steel imported direct, and tempered by our Secret Process; for Fine Finish and Temper are not excelled.