

Chess.

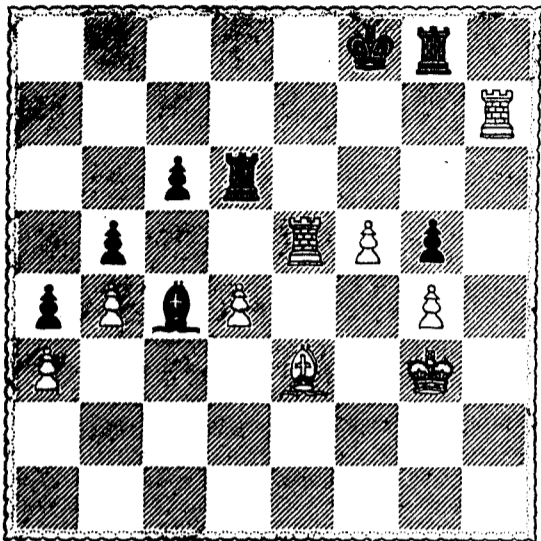
All Correspondence intended for this Column, and Exchanges, should be directed to the CHESS EDITOR, CANADIAN SPECTATOR Office, 162 St. James Street, Montreal.

Montreal, October 9th 1880.

END GAME NO. 1.

Position after White's 39th move in a game between Mr. Blackburne and Herr Pitschel, Paris Tournament, 1878.

BLACK (Herr Pitschel).



WHITE (Mr. Blackburne).

- | | | | |
|------------------|-----------|-----------------------|-----------|
| WHITE. | BLACK. | WHITE. | BLACK. |
| 39 | B to B 2 | 43 K to B 2 | R to Kt 2 |
| 40 P to Q 5 (a) | R takes P | 44 R takes R | K takes R |
| 41 B to B 5 (ch) | R takes B | 45 R takes B (b) | P takes R |
| 42 R takes R | B to Q 4 | 46 K to K 3 and wins. | |

(a) Exceedingly neat and effective.
(b) The shortest way to put him out of his misery.

SOLUTIONS OF TOURNEY SET NO. 16.—MOTTO: "Sua cuique voluptas."

PROBLEM NO. 108.—B to Kt 2.

Correct solution received from:—J. W. S.

- | | | | | |
|------------|---------------|-------------------|---------|------------------|
| White. | Black. | White. | Black. | White. |
| 1 Q to R 7 | K to Q 5 | 2 B to Kt 6 (ch) | K moves | 3 Q takes P mate |
| | If P to K 3 | 2 Q to Q R 7 (ch) | Any | 3 Q mates |
| | If P to K 4 | 2 Q to K 7 (ch) | Any | 3 mates acc. |
| | If Kt to Kt 5 | 2 Q takes P (ch) | K moves | 3 Q mates |

GAME NO. LXXII.

Companion Game to No. 71, played between Mr. J. E. Narraway, of St. John, New Brunswick, and Mr. J. W. Shaw, of Montreal.

FIANCHETTO DEFENCE.

- | | | | | | |
|---------------|-----------------|-------------------|--------------|-------------------|----------------|
| WHITE. | BLACK. | WHITE. | BLACK. | WHITE. | BLACK. |
| J. W. Shaw. | J. E. Narraway. | 7 P takes P | Q Kt to K 2 | 14 B takes P | Kt to Kt 3 |
| 1 P to K 4 | P to K 3 | 8 P to Q B 4 | Kt to Q B sq | 15 Kt to Q B 3 | R takes R (ch) |
| 2 P to Q 4 | P to Q Kt 3 | 9 Castles | B to Q 3 | 16 R takes R | P takes B |
| 3 Kt to K B 3 | B to Kt 2 | 10 R to K sq (ch) | K Kt to K 2 | 17 B takes Kt | Kt to K 2 |
| 4 B to Q 3 | P to Q B 4 | 11 Kt to K Kt 5 | P to K R 3 | 18 B takes P (ch) | K takes Kt |
| 5 P to Q B 3 | Kt to Q B 3 | 12 Q to R 5 | Castles | 19 R takes Kt | Q to K B sq |
| 6 P to Q 5 | P takes P | 13 Kt to R 7 | R to K sq | | |
- White announced mate in 4 moves.

CHESS INTELLIGENCE.

MONTREAL CHESS CLUB.—The Annual Meeting was held last Saturday evening, when the following officers were elected:—President, Dr. H. A. Howe; Vice-Presidents, Principal W. H. Hicks and Mr. T. Workman; Committee, Messrs. Barry, Ascher and Baker; Secretary-Treasurer, Mr. John Henderson. The Secretary-Treasurer read his report, and showed a balance in favour of the Club. The Committee were instructed to organize a Tourney among the Members, to be played during the ensuing winter, and in consequence of certain communications from Quebec, the Secretary was ordered to communicate with the Secretary of that Club with a view to raising an Inter-Provincial Telegraph Match, Quebec vs. Ontario, the intention being to obtain six members from each of the Clubs of Quebec and Montreal to challenge an equal number of players from Ontario. If this match should be carried out, we have no hesitation in saying that it would be a most interesting contest, and the commencement, probably, of a far more general interest in the Royal game. In the course of the evening Mr. M. J. Murphy, Chess Editor of the Quebec Chronicle, visited the Club, and was introduced to the members by Mr. J. W. Shaw.

THE TORONTO CHESS CLUB.—This powerful and well-conducted Club held its inaugural meeting of the season on Thursday evening, September 30th. The Secretary, Mr. W. A. Littlejohn, in an able and exhaustive report of last session, stated, among other matters, that the Club had been victorious in all its contests. The following are the office-bearers for the ensuing session:—President, Mr. M. H. Hirschberg; Vice-President, Mr. W. A. Littlejohn; Secretary, Mr. R. M. Bonfellow; Auditor, Mr. G. Gibson; Committee, Messrs. Rose, Gordon and Myers. The Club meets every Friday evening.

PROVINCIAL CLUBS.—Secretaries of Chess Clubs throughout Ontario and Quebec will greatly oblige by forwarding to us a list of their office-bearers with the time and place of meeting.

ITEMS.—*La Strategie* for September contains the final portion of a lively article, commenced in the August number, entitled "*Souvenirs de l'Echiquier*," from the facile pen of M. Alphonse Delannoy. Also an exhaustive report on the "Nature" Problem Tourney. This Tourney was confined to problems in two moves, and the award divides both 1st and 2nd prizes between two problems each. Thirty-four were adjudicated on, seven of them being disqualified. We acknowledge a kindly notice of our own Tourney in the August number. *Brentano's Monthly* for September is an excellent number. We would like to see the Chess article always commence a page. The Games are all carefully noted and the problems and diagrams are superb, but sui-mates in ten moves are little more to our taste than Beppo's 650 move "Megatherium Cross."—See the *Hartford Times*.

The End Game given above is taken from *Walter Pelham's Illustrated Journal*. In place of Problems this admirable Chess Column has for the last year presented the Chess public with End Games from actual play.

Ottawa River Navigation Company.



MAIL LINE DAY STEAMERS, BETWEEN MONTREAL AND OTTAWA.

Passengers for Ottawa and all intermediate ports take 7.15 a.m. train for Lachine to connect with steamer.

First-class Fare to Ottawa..... \$2.50
Do. return do..... 4.00
Second-class Fare to Ottawa..... 1.50

For the CALEDONIA SPRINGS, Excursion Tickets at reduced rates.
Baggage checked through to all ports at Bonaventure Depot.

DAILY EXCURSION FROM THE CITY.

All Day Trip to Carillon and back (passing St. Anne's, Lake of Two Mountains, Oka, Como, Rigaud, North River, &c.) Nice Grove near the wharf at Carillon. Steamer remains there about one hour and a half. Returns to Montreal *via* Rapids, reaching the city at 6.30 p.m.

Fare for Round Trip from Montreal, \$1.25.
On Saturdays, fare \$1.

DOWN THE RAPIDS EVERY AFTERNOON

Take 5 p.m. train for Lachine. Fare for Round Trip, 50c.

Saturday Afternoon Excursions to St. Anne's.

Leave Bonaventure Depot by 2 p.m. train (or an earlier train) for St. Anne's, returning home by steamer "Prince of Wales" *via* Rapids.
Fare for Round Trip, 80c from Montreal.
Tickets at Company's Office, 13 Bonaventure street, or the Grand Trunk Railway Offices and Depot.

R. W. SHEPHERD, President.

GRAY'S SPECIFIC MEDICINE, THE GREAT ENGLISH REMEDY,

Will promptly and radically cure any and every case of Nervous Debility and Weakness, result of indiscretion, excess, or overwork of the brain and nervous system; is perfectly harmless, acts like magic and has been extensively used for over thirty years with great success.

Full particulars in our pamphlet, which we desire to send free by mail to every one.

The Specific Medicine is sold by all druggists at \$1 per package, or six packages for \$5, or will be sent free by mail on receipt of the money by addressing

THE GRAY MEDICINE CO.,

TORONTO, ONT., Canada.

Sold by all wholesale and retail druggists in Canada and the United States.

HOPE FOR THE DEAF
Garnore's Artificial Ear Drums

PERFECTLY RESTORE THE HEARING and perform the work of the Natural Drum. Always in position, but invisible to others. All Conversation and even whispers heard distinctly. We refer to those using them. Send for descriptive circular. Address JOHN GARNORE & Co., B. W. Corner 5th & Race Sts., Cincinnati, O.

SPERMATORINE

The new French Medicine cures Nervous Debility and all nervous complaints, resulting in Loss of Memory, Serious Impediments to Marriage, Great Depression, etc., 75c per box; three for \$2. Sold by druggists everywhere. Wholesale—LYMAN BROS. & CO., Toronto. Sent by mail, securely sealed, on receipt of price. Address Imperial Medicine Agency, Toronto.

FITS EPILEPSY, OR FALLING SICKNESS

Permanently cured—no humbug—by one month's usage of Dr. Goulard's Celebrated Infallible Fit Powders. To convince sufferers that these Powders will do all we claim for them we will send them by mail, post-paid, a free Trial box. As Dr. Goulard is the only physician that has ever made this disease a special study, and as to our knowledge thousands have been permanently cured by the use of these Powders, we will guarantee a permanent cure in every case, or refund all money expended.

Price, for large box, \$3, or four boxes for \$10, sent by mail to any part of the United States or Canada on receipt of price, or by express, C.O.D.

CONSUMPTION POSITIVELY CURED.

All sufferers from this disease that are anxious to be cured should try Dr. Kisser's Celebrated Consumptive Powders. These Powders are the only preparation known that will cure Consumption and all diseases of the Throat and Lungs—indeed, so strong is our faith in them—and also to convince that they are no humbug—we will forward to every sufferer, by mail, post paid, a free Trial box.

We don't want your money until you are perfectly satisfied of their curative powers. If your life is worth saving, don't delay in giving these Powders a trial, as they will surely cure you.

Price, for large box, \$3, sent to any part of the United States or Canada, by mail, on receipt of price. Address

ASH & ROBBINS,
360 Fulton St., Brooklyn, N.Y.

DENVER, COLORADO.

A GENTLEMAN, going to reside in Denver, Col., would represent a house on commission. Best of references and security, if required. Address this office. 27

IN THE WHOLE HISTORY OF MEDICINE

No preparation has ever performed such marvellous cures, or maintained so wide a reputation, as AYER'S CHERRY PECTORAL, which is recognised as the world's remedy for all diseases of the throat and lungs. Its long continued series of wonderful cures in all climates has made it universally known as a safe and reliable agent to employ. Against ordinary colds, which are the forerunners of more serious disorders, it acts speedily and surely, always relieving suffering, and often saving life. The protection it affords, by its timely use in the throat and chest disorders of children, makes it an invaluable remedy to be kept always on hand in every home. No person can afford to be without it, and those who have once used it never will. From their knowledge of its composition and effects, physicians use the CHERRY PECTORAL extensively in their practice, and clergymen recommend it. It is absolutely certain in its remedial effects, and will always cure where cures are possible.

FOR SALE BY ALL DEALERS. 28

PAULL & SON,

ARCHITECTS, &c.,

No. 3 Trust & Loan Buildings,

TORONTO STREET,

TORONTO. 29

TENDERS WANTED.

To Shippers and Wharfingers.

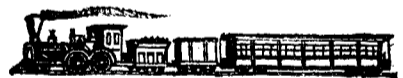
The Credit Harbour Tolls and Warehouses to let for one year or a term of years. The harbour is one of the best on Lake Ontario, and offers unprecedented advantages to speculators. Immediate possession. All particulars and necessary information given by applying personally or by letter to

PAULL & SON,

No. 3 Trust & Loan Buildings,

TORONTO STREET,

TORONTO. 33



Midland Railway of Canada,

AND

WHITBY, PORT PERRY and LINDSAY R. R.

NOTICE TO SHIPPERS.

ALL FREIGHT FOR POINTS ON THE above roads should be shipped *via* the GRAND TRUNK RAILWAY, when it will be forwarded by the shortest route without transshipment and at the cheapest rates.

FAST FREIGHT TRAINS RUN THROUGH TO Peterborough, Fenelon Falls, Kinmount, Minden, Orillia, Lindsay, Haliburton, Midland, and Wau-bashene, connecting with fast steamers for Parry Sound and Byng Inlet.

For rates, etc., apply to local agents, or to A. WHITE, General Traffic agent, Port Hope.

GEO. A. COX,

Managing Director, M. R. of C.

JAS. HOLDEN,

Managing Director, W., P. P., & L. Ry.

CHARLES D. EDWARDS,

MANUFACTURER OF

FIRE PROOF SAFES,

39 Bonaventure Street,

MONTREAL.