

THE CANADIAN ARCHITECT AND BUILDER

Vol. XX.—No. 3.

Toronto, Montreal — MARCH, 1907 — Winnipeg, Vancouver

PRICE 30 CENTS
\$1.00 PER YEAR

TILES FAIENCE MOSAICS

GRAVEN, DUNNILL & CO., LIMITED

JACKFIELD, R. & O., SHROPSHIRE.

ENAMELS WALLS LUSTRES

Automatic Heat Closing Fireproof Windows

Fireproof Doors and Skylights, Fire Door Hardware, Adjustable Fire Door Hangers, Metal and Cement and Metal and Glass Fireproof Partitions, Cornices, Corrugated Iron, Metal Ceilings, Etc., Slates, Felt and Gravel Roofers

A. B. ORMSBY, LIMITED

Factories: Queen & George Sts., TORONTO. - 677-9-81 Notre Dame W., WINNIPEG

OTIS-FENSOM ELEVATOR CO., Limited

MANUFACTURERS OF "OTIS STANDARD ELEVATORS"

HEAD OFFICE: CONFEDERATION LIFE BLDG., TORONTO.

MONTREAL OFFICE 423 ST. JAMES ST.

WINNIPEG OFFICE 44 CANADA LIFE BUILDING.

"MADE IN CANADA"

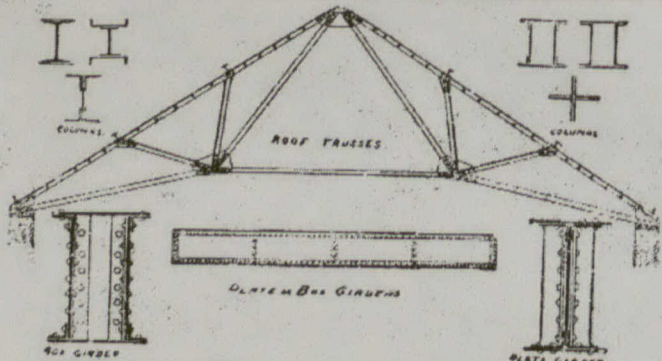
Bent Glass

Made in all Kinds of Glass on Short Notice.

Large Bent Plate Glass for Shop Fronts a Specialty.

Toronto Plate Glass Importing Co. (HILL & RUTHERFORD) 135-143 Victoria Street

BRANCH OFFICES: 209-213 Victoria Street TORONTO



DOMINION BRIDGE CO. (LIMITED)

WE BUILD { Bridges of all designs in both Iron and Steel, Roofs, Telephone Poles, House Girders and all kinds of Structural Iron Work

OUR STOCK IN HAND COMPRISES { Steel Beams, Angles, Tees, Channels, Plates, Rolled Edged Flats, Bars, Rivets, Rounds, Ac. Iron Beams, Bars, Squares, Turnbuckles, Rivets, Ac.

Estimates furnished for Structural Iron Work delivered at building or erected

GEORGE E. EVANS, Ontario Agency: Room 38, Canada Life Building, Toronto. Telephone Main 2164

Post Office Address: DOMINION BRIDGE CO., LTD., Montreal, P. Works at Lachine Locks, P. Q.

TURNBULL ELEVATORS

SEE AD. PAGE VIII
The Turnbull Elevator Mfg. Co. Toronto

ELEVATORS

For all purposes. Satisfaction guaranteed. Write for prices and references

THE PARKIN ELEVATOR WORKS 258 Catherine Street North, HAMILTON, ONT.