

# The Celluloid Company

30, 32, 34, 36  
Washington Place

NEW YORK

ORIGINAL and ONLY  
Manufacturers of

"CELLULOID" Interlined Waterproof  
Collars and Cuffs . . .

All goods made by us are stamped as follows :

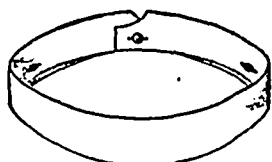
Absolutely No



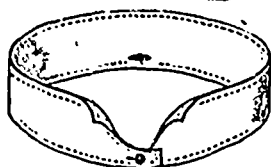
TRADE

CELLULOID  
MARK.

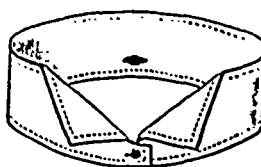
Others Genuine



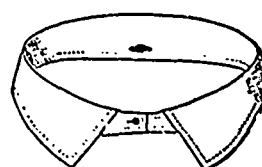
**ROMAN**  
Sizes 15 to 17 1/2 in.  
Front 1 3/8 in.  
Back 1 in.



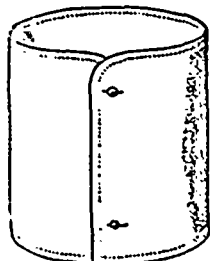
**VULCAN**  
Sizes 13 to 18 1/2 in.  
Front 1 3/4 in.  
Back 1 1/2 in.



**TITAN.**  
Sizes 13 1/2 to 20 in.  
Front 2 1/2 in.  
Back 2 1/4 in.



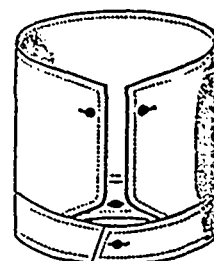
**ROYAL**  
Sizes 12 1/2 to 20 in.  
Front 1 7/8 in.



**EXCELSIOR.**  
Sizes 8 to 11 1/2 in.  
WIDTH 3 1/2 in.

Roman, Cardinal and Bishop Collars may be had plain  
or with either three or five button-holes.

**CAUTION** It having come to our notice that certain manufacturers  
are producing and advertising imitations of our goods  
under the name of "Celluloid," we desire to notify the trade that the word  
"Celluloid" is a registered trade mark, and our right to its exclusive use having  
been upheld by the courts, we shall hold responsible not only such manufactur-  
ers but also all dealers handling any goods, other than our make, under the  
name of "Celluloid."



**FIFTH AVE.**  
Sizes 9 1/2 to 11 1/2 in.  
Width 3 1/2 in.

The Celluloid Company

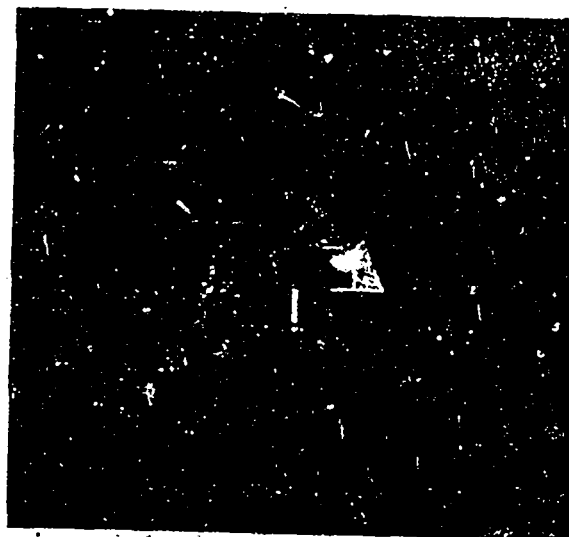
Basement 100 Feet Long.

Lighted by Luxfer Prisms.



Basement 100 Feet Long.

Lighted by Ordinary Glass.



The  
Greatest  
Invention  
of the  
Victorian  
Era.

Why Not Make Use of the Valuable Space in Your Basement?

Visitors are invited to examine the Basement at the Warehouse of the

**LUXFER PRISM COMPANY, LIMITED**

58 Yonge Street,

Toronto.