



**H. CARTER'S
PATENT DITCHING MACHINE,
Is adapted for all soils.**

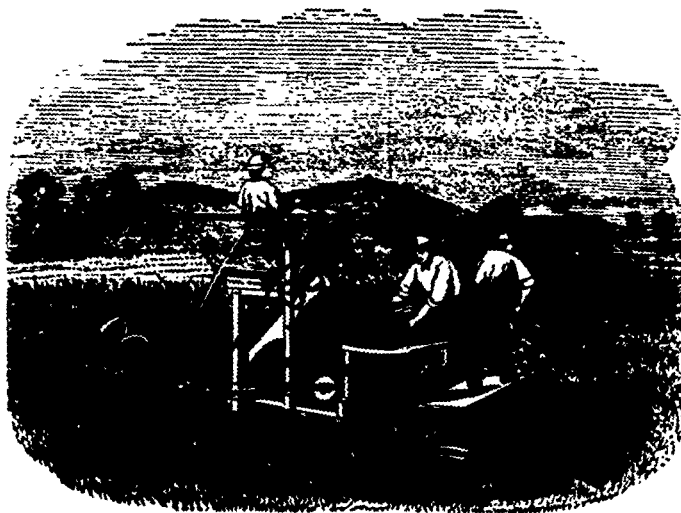
THE subscribers are now prepared to supply the public with this valuable Implement. We guarantee our Machine to cut (according to soil) from 100 to 200 rods per day, three feet deep.

All orders promptly attended to. Address

v16:n.

EYER & BRODER, Richmond Hill, Ont.

THE RENOWNED HARVESTING MACHINE,



THE MARSH HARVESTER.

Acknowledged to be the Most Economical and Successful Reaper in the World.

- IT SAVES one-half the expense of binding.
- IT SAVES the board and wages of THREE MEN.
- IT SAVES in REPAIRS. Being strongly built and simple in construction.
- IT SAVES HORSE FLESH. Draft (carrying three men) being LITTLER than any other machine cutting same width.
- IT SAVES at least ONE BUSHEL OF GRAIN PER ACRE, wasted by other machines.

We also manufacture the well known

LEFFEL DOUBLE TURBINE WATER WHEEL

For particulars address

PAXTON, TATE, & CO.,
PENNY ST., PORT PERRY, ONT.

v15-11

Contents of this Number.

	PAGE.
THE FIELD:	
Hay making, Hay Tedders, Gang Ploughs ..	201
Best Root Sugar making in England.....	202
Practical Drainage.....	203
Canada Flax Experiments.....	204
Which kind of Carrot is the best for Field Culture? Turnips a Paying Crop.....	205
Edge and Furrowing Land; White Fensue ..	206
Improving Poor Land, Treat th Land well, Hop-growing ..	207
Sowing Grass seeds, Harboring Babes and Oats, Measure of an Acre; Items.....	208
THE DAIRY:	
Caring and Cooling Milk, How to Milk Cows ..	209
Purity of Flavour in Cheese, Rennets.....	210
Working Butter, Cheddar Cheese competition. 211	
VETERINARY DEPARTMENT:	
Flatulent Colic.....	211
STOCK DEPARTMENT:	
Notes on Canadian Herds; Prize Ayr-shire Cattle (with Illustrations).....	212
Cattle Breeding In-and-in.....	213
Soil for Stock; European Cattle, Sheep and Hogs; Short-horn Items, Hamilton Sheep and Shearing Exhibition.....	214
Grade Barrens; Sawdust for Bedding; Items..	215
POULTRY YARD:	
Report of the Poultry Exhibition, Short Items..	215
ENTOMOLOGY:	
Carnivorous Ground Beetles (with cuts); What a Spider eats per diem.....	217
Enquiries about Insects (with cuts); Flies.....	218
APIARY :	
To get Bees out of Honey Boxes; Improved Method of Swarming.....	210
CORRESPONDENCE :	
Mind and Labour on the Farm; Labour-saving Machinery.....	220
Drive the Work, Tan Bark.....	221
EDITORIAL :	
Notes on the Weather; Gentel vs. Manual Occupations.....	221
Notes of a Short Trip; Books Received.....	222
Recovery from Drowning (with cuts).....	223
Patrick Bell, Drain the Ditching Machine.....	224
HORTICULTURE :	
Bot and Mildew in Grapes	225
Planting and Re-planting Plants.....	226
Renovating Orchards, Orchard Culture	229
Hamilton Horticultural Exhibition, Distances for Planting Trees.....	229
How to secure a Crop of Plums, Garden Culture	230
Culture of Dwarf Pear Trees; Watering Plants in Summer; The New York Grape Market for 1868; Prices of Fruit in 1868.....	231
Bullies, Grapes at Sandusky; New and Rare Fruits; The Niagara Fruit District; Items.....	232
RURAL ARCHITECTURE:	
Cheap Country House (with illustrations).....	233
HOUSEHOLD:	
Labour-saving Machinery—Indoors; Domestic Receipts.....	234
To Wash Feathers.....	235
POETRY:	
One Year Ago; Coming Home.....	235
AGRICULTURAL INTELLIGENCE :	
Away West.....	235
Information about Red River.....	236
Agricultural Items.....	237
MISCELLANEOUS:	
Size of Nail, Strawberry Wine; The Elephant and the Railway.....	238

THE CANADA FARMER is printed and published on the 15th of every month, by the GLOBE PRINTING COMPANY, at their Printing House, 26 and 28 King Street East, Toronto, Ontario, where all communications for the paper must be addressed.

Subscription Price, \$1 per annum (POSTAGE FREE) payable in advance.

THE CANADA FARMER presents a first-class medium for agricultural advertisements. Terms of advertising, 20 cents per line space. Twelve lines' space equals one inch. No advertisements taken for less than ten lines' space.

Communications on Agricultural subjects are invited, addressed to "The Editor of the Canada Farmer," and all orders for the paper are to be sent to

GEORGE BROWN,
Managing Director.