

ARMSTRONG & MORRISON

MANUFACTURERS OF STEEL AND IRON PIPE AND MINING MACHINERY.

We are making the best and most serviceable Automatic Mining Ore Cars (including Scoop Cars) for sale in the market. These cars are fitted with CAST STEEL WHEELS and are made in different sizes.

Ore Cars

o—Write for particulars.—o

Office and Works: foot of Heatley Avenue.

P. O. BOX 5, VANCOUVER, B.C.

F. ADRIAN MEYER BROKER

Sub-Collector of Customs. . . .

Deputy Collector of Inland Revenue.

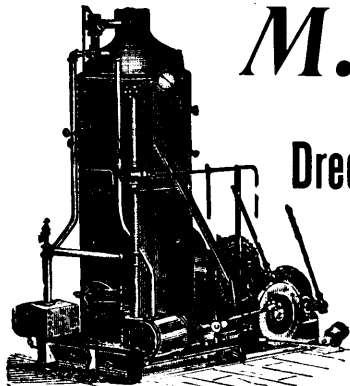
Notary Public.

VERNON, B.C.

MICHIGAN COLLEGE OF MINES.

Supported by the State of Michigan. Practical work. Elective system. Special advantages for men of age and experience. For catalogues address

DR. M. E. WADSWORTH, President,
Houghton, Michigan



M. BEATTY & SONS,

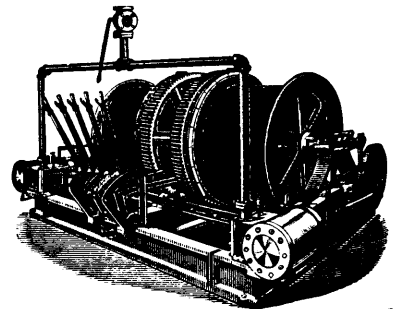
WELLAND, ONTARIO,

Dredges, Ditchers and Steam Shovels,

For Dredging, Ditching, Dyking, Gold Mining, Etc.
Of various styles and sizes to suit any work.

Mine Hoists, Hoisting Engines, Stone Derricks, Horsepower Hoists, Suspension Cableways, Submarine Rock Drilling Machinery, Gang Stone Saws, Centrifugal Pumps for Drainage Works, Pumping Sand, Gold Mining, Etc.

We also furnish WIRE ROPE at Lowest Prices.



Joshua Hendy Machine Works,

Nos. 38 to 44 Fremont St., SAN FRANCISCO, Cal., U.S.A.

—MANUFACTURERS OF AND DEALERS IN—

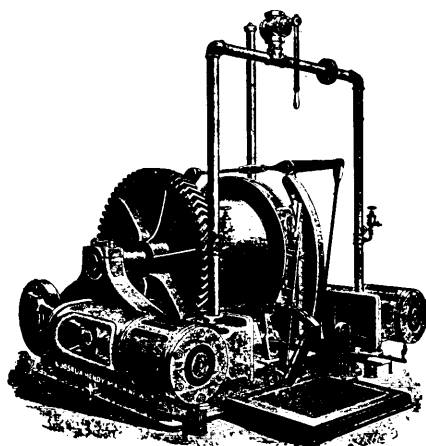
Hydraulic, Quartz Mining, Milling Machinery

—COMPRISING—

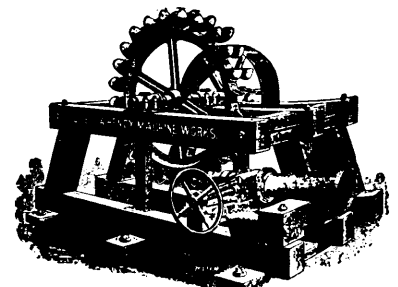
HYDRAULIC GIANTS,
WATER GATES,
SHEET IRON and
STEEL PIPE,
STAMP MILLS,
ORE CRUSHERS,
ORE FEEDERS,

CONCENTRATORS,
SMELTERS,
HOISTING and
PUMPING PLANTS,
SAW MILLS,
MINE and MILL
SUPPLIES, Etc., Etc.

Catalogues and Prices Furnished
Upon Application



HOISTING ENGINE.



IMPACT WATER WHEEL.

123.

Telegraphic Address, "Waterman, Vanc."

W. J. WATERMAN,
Mining . .
Engineer,

610 Granville Street,

VANCOUVER, B.C.

The Mining Journal...

124 pages; Royal 4to;
17 Full-Page Plates.
Price, - - - 21s.

PRESENT DAY METALLURGICAL ENGINEERING ON THE RAND
By John Yates, Associate of the Royal School of Mines, London;
Fellow of the Geological Society of London; Member of the Federated Institute of Mining Engineers. . . With an Appendix on the
ECONOMICS OF THE TRANSVAAL GOLD MINING INDUSTRY, By Hennes
Jennings, Consulting Engineer to Messrs. Eckstein & Co.

LONDON OFFICE—18 FINCH LANE, E.C.