

Cards
DR. W. E. HARLOW, Dentist, Office, Primrose Block, Granville Street, Bridgetown, N. S. Hours 10-5.

A. LIVINGSTONE, Barrister & Solicitor, Office of Nova Scotia Building, NAPOLIS ROYAL.

O. S. MILLER, Barrister and Solicitor, Shafner Building, BRIDGETOWN, N. S. Telephone 15.

W. E. REED, Director and Embalmer, Office in Casquets, etc. All Hearings sent to all parts of country.

Dr. C. B. SIMS, Medical and Surgical, Office in Casquets, etc. All Hearings sent to all parts of country.

Dr. PARADISE, N. S., Office in Casquets, etc. All Hearings sent to all parts of country.

AM. FITZGERALD, Director and Embalmer, Office in Casquets, etc. All Hearings sent to all parts of country.

WRENCENTOWN, N. S., Office in Casquets, etc. All Hearings sent to all parts of country.

A. B. FIMETAP, Office in Casquets, etc. All Hearings sent to all parts of country.

YOUR GROCER HAS IT, Advertisement for a grocery store.

Education Days, Advertisement for educational events.

Finish Films promptly, Advertisement for film services.

Check Books, Advertisement for check books.

CHECK 5 CIGAR, Enjoyment in Every Puff!

TOURIST TRAFFIC ADDING MILLIONS TO OUR REVENUE.

Visitors From States Alone Spent \$150,000,000 Here Last Year.

The potentialities of the tourist industry as one of the important sources of income of the Dominion are again illustrated by an analysis which the Highways Branch of the Federal Department of Railways and Canals has just published.

One of the leading factors in the building up of the tourist traffic is the construction of good highways.

Distribution of the Traffic. The registrations of all types of motor vehicles in the various provinces last year reached the total of \$50,221, which was an increase of 11 per cent over 1923.

There are, therefore, some 35,000,000 potential tourists to Canada in these states. The figure which is necessarily an estimate, illustrates the possibilities in the development of better highways, especially those running north and south.

YOUR OWN TOWN

Your own town is where your home is, where your business is situated, where your vote is cast, where your children are educated, where your life of the greater part of it is spent.

It has a right to your loyalty, it supports you and you must support it. Your town wants your friendship—not partisanship; co-operation—not dissension; sympathy—not criticism; intelligent support—not indifference.

Your town supplies you with law and order, trade, friends, education, recreation, and the rights of a free-born Canadian. You should believe in your town and work for it.

You will always find people who are willing to condemn their own town, their own country, and the world in general. You will also hear people say that the world is a funny place to live in, and that it is going to the dogs.

Compare our lives in Canada today with those of our forefathers fifty years ago. In those days there were few railroads, no motor cars, no telephones, no lighting plants, no radio, nor a thousand other things that make life worth living today.

UNITED STATES GOING TO POT: TOO MUCH PROSPERITY.

Britain Can Contribute Herself on Exceeding Basis of Too Much Prosperity.

The news that comes from our Washington correspondent of the United States Government's pleasurable business to dispose of, and of the 20 to 50 per cent. Mr. Mellon proposes to take off the income tax, an income tax already insignificant compared with our own, will make many British mouths water.

The special train operated by the Canadian Pacific Railway and known as The Trans-Canada Limited, which makes the journey across the entire country in eighty-eight hours, recently commenced its season, the seventh since its inception.

According to a bulletin issued by the Bureau of Statistics Alberta's foreign population is in excess of 180,000 with approximately 100,000 American included in the total. About 5,000 Americans reside in Calgary.

When Their Majesties King George and Queen Mary paid their official visit to the British Empire Exhibition at Wembley shortly after the reopening, they boarded the miniature Canadian Pacific train and made a trip around "Treasure Island" and expressed great interest in all they saw.

An effort will be made this year to transplant Swiss mountain roses in the Canadian Rockies. These roses, which were brought from Switzerland by Dr. Hubscher, late Swiss Consul at Montreal, are extremely hardy and only thrive above elevations of 3,000 feet.

The first trip of the Canadian Pacific S.S. Princess Kathleen from Vancouver to Seattle via Victoria was recently made under most successful conditions. The people of Seattle are so enthusiastic over the increased coastwise service that they have tendered an address of thanks to Captain Troup, manager of the Canadian Pacific Coastal service.

There is every possibility that the Provincial Government of British Columbia may this year complete the construction of the scenic highway connecting Golden on the main line of the Canadian Pacific Railway with the summer resorts of Banff and Lake Louise.

Building permits issued in Canada during the first quarter of 1925 were 10.2% and 1.2% greater than in the first three months of 1924 and 1923, respectively.

Widespread prosperity, easy money, the ubiquitous motor car, the corruption of those in authority, have made real crime scarcely less prevalent than the universal commission of mala prohibita, inflicted by doubtful methods on a nation that does not want them.

With the wave of crime has come an equal wave of social depravity. Prohibition is forcing prosperity and industry upon the working classes, but according to the testimony of Americans themselves, it is debauching the flower of the nation's youth.

Here and There

During 1924 the 1,399 bushels of Manitoba marketed 1,399 pounds of honey, valued at \$2,000, according to official returns by the Provincial Apiculturist.

Prof. J. A. Allen, Provincial Geologist of Alberta, declares in an official statement that sixty-two billion tons of coal, half of which is recoverable, lie beneath the surface of Alberta soil.

Seymour Backus, Vice-President of the Backus-Brooks Company, of Winnipeg, states that the largest producing pulp mill in the world will be in operation at Kenora, Ont., before the end of 1925.

It is estimated that Vancouver will ship approximately 25,000,000 bushels of grain of the 1924 crop. Shipments already total 21,188,000 bushels. Commitments for almost 1,000,000 additional bushels have been made.

The special train operated by the Canadian Pacific Railway and known as The Trans-Canada Limited, which makes the journey across the entire country in eighty-eight hours, recently commenced its season, the seventh since its inception.

According to a bulletin issued by the Bureau of Statistics Alberta's foreign population is in excess of 180,000 with approximately 100,000 American included in the total. About 5,000 Americans reside in Calgary.

When Their Majesties King George and Queen Mary paid their official visit to the British Empire Exhibition at Wembley shortly after the reopening, they boarded the miniature Canadian Pacific train and made a trip around "Treasure Island" and expressed great interest in all they saw.

An effort will be made this year to transplant Swiss mountain roses in the Canadian Rockies. These roses, which were brought from Switzerland by Dr. Hubscher, late Swiss Consul at Montreal, are extremely hardy and only thrive above elevations of 3,000 feet.

The first trip of the Canadian Pacific S.S. Princess Kathleen from Vancouver to Seattle via Victoria was recently made under most successful conditions. The people of Seattle are so enthusiastic over the increased coastwise service that they have tendered an address of thanks to Captain Troup, manager of the Canadian Pacific Coastal service.

There is every possibility that the Provincial Government of British Columbia may this year complete the construction of the scenic highway connecting Golden on the main line of the Canadian Pacific Railway with the summer resorts of Banff and Lake Louise.

Building permits issued in Canada during the first quarter of 1925 were 10.2% and 1.2% greater than in the first three months of 1924 and 1923, respectively.

Mustard is valuable in the diet

Did you know that mustard not only gives more zest and flavor to meats, but also stimulates your digestion? Because it aids assimilation it adds nourishment to foods.

but it must be Colman's

The Railway Problem. Le Canada. "The Canadian Pacific Railway is prosperous and its prosperity has been and is one of the most beneficial elements in the welfare of the Dominion. The railway therefore is closely related to our economic position. As it is urged that there is not enough traffic for two great railways in competition, and that we cannot hope there will be enough traffic in certain parts of the country in the near future, it would seem that the hypothetical success of the National Railways can be obtained only at the expense of the private company. In one event as in the other, it is the country that will suffer in the long run. In these circumstances it will be the part of wisdom to give due consideration to the project submitted by the Committee of the Senate looking to the working amalgamation of the two railways and their operation by one and the same Board of Administrators. If the present situation is persisted in, either we must continue to pay in deficits enormous sums of money or else we shall lose the relief that can be obtained in the direction pointed out by the Senate Committee."

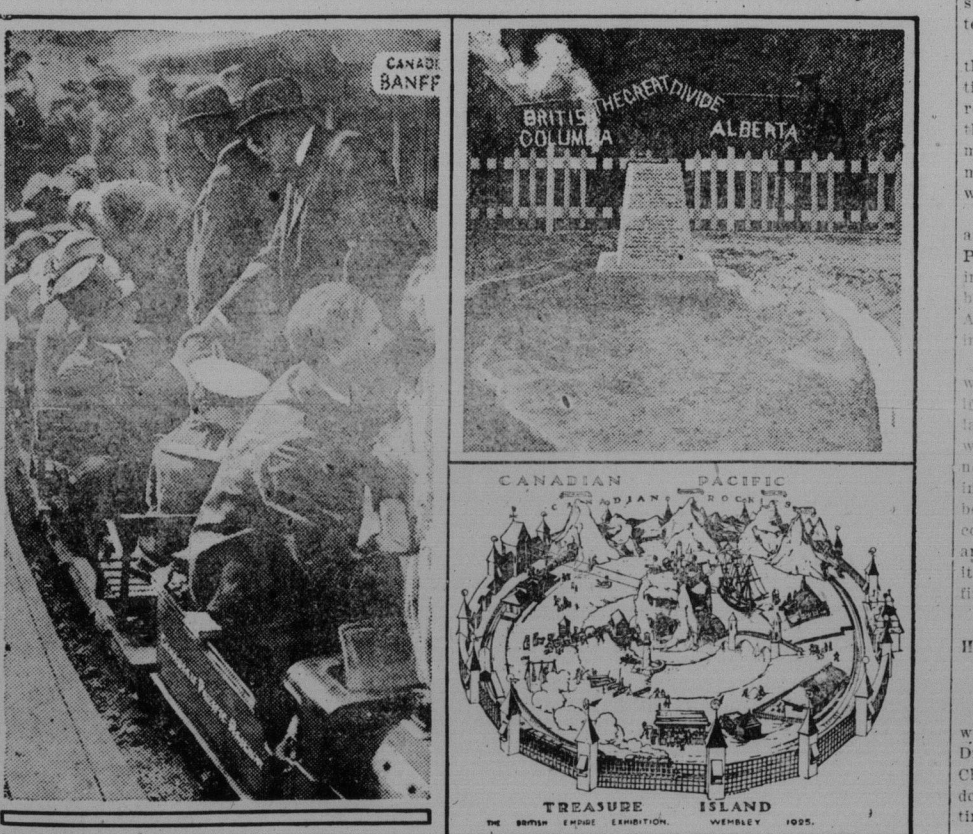
FLAMES DESTROY KENTVILLE PLANT. Woodworking Plant of A. P. Redden Razed—Damage is About \$3,000. Kentville.—Kentville lost another industry Wednesday afternoon when the woodworking factory of A. P. Redden was completely destroyed by fire. The loss is placed at \$3,000 and is not covered by insurance.

FOR SAFER DRIVING. Dim your headlights. When going slow, keep toward the curb. Don't take on or discharge passengers without pulling up to the curb. Slow down at intersections. Sure-working brakes are better than a loud horn.

SAYS HASTY EATING MAY CAUSE CANCER. Dr. Osmond Tells Radiological Meeting Oesophagus is Prey to Irritation. Atlantic City.—High-pressure living and hasty eating of the modern American is causing a decided increase in the development of cancer in the oesophagus, it was announced here today at the mid-annual meeting of the Radiological Society of North America, in Haddon Hall.

FUNERAL MARCH, PLEASE. There was a man in our town, And he was a speedy guy. He turned the corners on two wheels, Crossed crossings on the fly, But yesterday, the Extras say, This wise man saw the light, His silver stalled on the railroad track, Toot, toot! Ding, dong! Good Night!

A Wonderland for Children at Wembley



Viscount Jellicoe, former Admiral of the British Navy during the Great War, shaking hands with Sir George McLaren Brown, European General Manager of the Canadian Pacific Railway, at the miniature Banff Station and seated on the miniature C.P.R. train which takes travellers around Treasure Island. Viscount Jellicoe is remarking: "This is but another of the great things the Canadian Pacific Railway is doing and I am sure that the Canadian Pacific trains are going to prove in conjunction with the wonders of Treasure Island one of the drawing cards of the (Wembley) Exhibition." The engine which draws this train is a replica of engine No. 2008. The Island is intended most of all to delight children who obtain views of a sandy beach on which Robinson Crusoe and Man Friday disport themselves. There, too, the children dig in the sands to their hearts' content and there are caves and Noah's Ark with chaises of moving animals; pirates and seventeenth century ships, characters out of fiction such as Pan and Wendy, Long John Silver and Jim Hawkins, Tweedledum and Tweedledee. The train passes through the Connaught tunnel and winds in and out of the Canadian Rockies through the Great Divide. There are realistic scenes of Banff and Lake Louise and a part of wild animals while from the sands the children climb by pony tracks to the summits of many famous peaks in the Canadian Pacific Rockies.

Heft it Once! Then You Will Want One for Your Own Kitchen. SMP ENAMELED TEA KETTLE. The very feel of it will make you want to own it. It balances so nicely, seems to be just right. The handle is rigid and does not tip around like a hinged handle. That means no slipping, scalded hands or accidents. See how you fill it? You lift the hinged lid and can fill it right under the tap or by dipper because the opening is at the side, not the centre. Most important, these new up-to-date kettles cost no more than the old fashioned kettle.

S. M. P. Goods for sale by KARL FREEMAN and MAGEE & CHARLTON Bridgetown - N. S.

Boston & Yarmouth Steamship Co., Ltd. Freight and Passenger Service Six Trips Weekly—Fare \$9.00. S. S. Northland and S. S. Prince George. Leave Yarmouth Daily except Sundays at 6.30 P.M. (Atlantic Time). Return leave Boston Daily except Saturday at 2 P. M. Daylight Saving Time. For Staterooms and Other Information apply to J. E. KINNEY, Supt., Yarmouth, N. S.