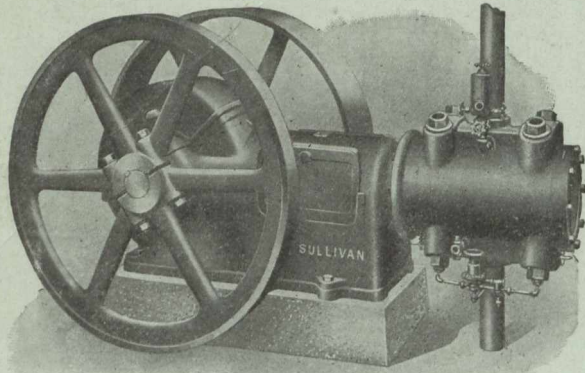
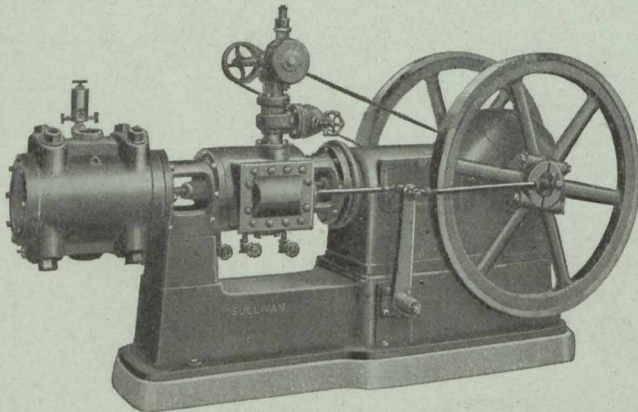


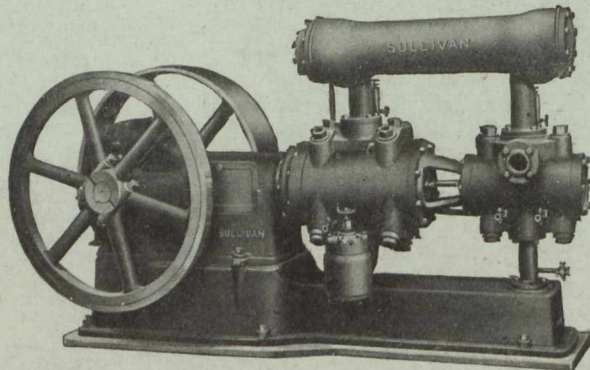
# AIR COMPRESSOR RELIABILITY



Sullivan "WG3," Belted Compressor, 50-300 cu.ft.  
Bulletin 675-G



Sullivan "WA5," Steam-driven Compressor,  
120-250 cu.ft. Bulletin 675-D



Sullivan "WH3," Two-Stage Belted Compressor,  
Bulletin 675-G

## Air Reliability

is the important thing for you, whether you use 100 feet of air power per minute, or 10,000

In buying small compressors you want—not a "cheap" machine, but one that you can depend on to run right and to run all the time—with greatest efficiency, with least power and attendance. These qualities are found in an unusual degree in these small

### Sullivan Air Compressors

Splash lubrication, radial poppet inlet and outlet valves, water jackets on cylinders and heads, total closure unloading device, liberal area bearing surfaces, high standards in materials and construction — are features of Sullivan small air compressors that secure to their owners steady, reliable, efficient air power service, year in and year out.

The types shown here can be shipped from stock in a number of convenient sizes.

*Ask for Prices.*

## Sullivan Machinery Company

122 S. Michigan Ave., Chicago

Boston  
Juneau

London  
Nelson, B. C.

New York  
Spokane

Sydney, N. S. W.  
Toronto

Vancouver, B. C.  
Wallace, Idaho.