

BAGPIPES

We're the largest
Bagpipe dealers in
North America.

Lawrie's famous
make is the kind
we sell. Write to-
day for

FREE
CATALOG

We're from the Old
Country ourselves
and know all about
the Pipes.

Chanters, Bags,
Reeds, etc., in big
stock. Repairs
promptly done.

Write for Catalog
to-day.

ORME

OTTAWA ONT.

Free

Our Catalog describes
about all the trees, shrubs
and fruits suitable for
planting in the Provinces
of Western Canada. Sent
Free. Your name and
address on a post card
will bring it.

Buchanan Nursery Co., St. Charles, Man.

THE BOY CROP

How's the boy crop, neighbor?
What's the chances ay it?
Is it rootin' deep an' sound
In Life's rich an' meller ground?
Is it growin' rank an' strong
Is it comin' right along
With fair skies above it?

What's the boy crop, neighbor?
Is the rains the growin' kind?
Do they keep in yer mind?
Do you ever stop to see
If it's growin' thriftily?
Do you sort of love it?

Got a boy crop, neighbor?
Air ye thinkin' ay it?
Air ye givin' it a show
Fer to thicken up an' grow
Into manhood strong and true
Such that you'll be proud that you
Was the grower ay it?

"Friend," asked a traveller who had
lost his way, "where is Mugg River?
I expected to find it somewhere along
here, but I don't see any signs of it."
"Mugg River, sir," said the man
in the doorway of the log cabin,
pointing to a dry gully a short dis-
tance ahead, "has been postponed
this year on account of the weather."



SYNOPSIS OF CANADIAN NORTHWEST LAND REGULATIONS

ANY person who is sole head of a family
or any male over eighteen years old, may
homestead a quarter-section of available Dom-
inion land in Manitoba, Saskatchewan or Alberta.
The applicant must appear in person at the
Dominion Lands Agency or Sub-agency for the
district. Entry by proxy may be made at any
agency, on certain conditions, by father, mother,
son, daughter, brother or sister of intending
homesteader.

Duties.—Six months' residence upon, and
cultivation of the land in each of three years.
A homesteader may live within nine miles of
his homestead on a farm of at least 80 acres solely
owned and occupied by him or by his father,
mother, son, daughter, brother or sister.

In certain districts a homesteader in good
standing may pre-empt a quarter-section along-
side of his homestead. Price \$3.00 per acre.
Duties.—Must reside six months in each of six
years from date of homestead entry (including
the time required to earn homestead patent)
and cultivate fifty acres extra.

A homesteader who has exhausted his hom-
estead right and cannot obtain a pre-emption may
take a purchased homestead in certain districts.
Price \$3.00 per acre. Duties.—Must reside
six months in each of three years, cultivate fifty
acres and erect a house worth \$300.00.

W. W. CORY,

Deputy of the Minister of the Interior.

N. B.—Unauthorized publication of this
advertisement will not be paid for.

GOSSIP

NATIONAL HORSE SHOW

The Canadian National Horse Show
Association, whose annual spring show
in Toronto, owing to inability to secure
suitable quarters, was last year with-
drawn, have succeeded in making satis-
factory arrangements for the use of the
Armories in which to hold the show
next spring, the dates fixed being May
3rd to 7th. The cavalry regiments of
Toronto will combine with the Canadian
Horse Show Association, and the event
will be not only a horse show, but also
a military horse show, under the
direction of a joint executive composed
of representatives of the Toronto
Garrison and the Canadian Horse Show
Association.

ALFALFA AND BEES

Alfalfa raisers find it to their ad-
vantage to have a few stands of bees.
As the original cost is slight, and the
bees provide their own food, go after
the raw material for the manufacture
of honey, demand but slight attention
and make such bountiful returns, bee
culture has come to be a valuable "side
line" for the farm. As blooms are to
be found in alfalfa districts every day
from early May to late October, the bees
have a constant opportunity for service.

Alfalfa honey is white and clear, in an
extremely delicate comb, has a deli-
cious flavor, and an aroma that is de-
lightful. One authentic report from
a Western Kansas county is of a single
hive that contained nearly 200 pounds
and of another having ninety-six pounds.
The owner of these had twenty-five
acres of alfalfa which in one year yielded
him over one hundred tons of choice
hay, besides the honey. The next year
he increased his apiary to fifty stands.

While the average yield per hive
elsewhere varies from fifteen to thirty
pounds, the average in the alfalfa-
growing territory is far higher. Thus,
the financial returns of alfalfa may be
greatly increased, and in some instances
doubled, by having, say two colonies of
bees for each acre. Or, if only a part
of the alfalfa raisers in a neighborhood
kept bees, this ratio could be doubled
or trebled by those who do. Unlike
other trespassers on neighbors' fields
the bees do the neighbors a distinct
favor, by fertilizing their alfalfa.
From Coburn's "The Book of Alfalfa."

Never have you been made such a
broad-minded proposition as the one
on the Dysthe Face Protector in this
issue. Read it.

A GROWING INSTITUTION

This expression is belittlingly ex-
plained by the A. E. McKenzie Co.,
Ltd., Brandon and Calgary, if we
must judge from the appearance of
their seed catalog just issued. When
we turn over the pages of their 1910
annual, a wonderfully artistic and
most handsome book, and recall cata-
logs many years back, each bringing
forth expressions of its beauty and
improvement, we wonder what next
to expect. The half-tone illustra-
tions, photographic reproductions
from life, portray the wonderful pos-
sibilities of pure seed, and make us
appreciate that this is, indeed, a land
of opportunity. Such possibilities
give promise that no apology will be
necessary for the appearance of the
garden or the farm.

Their work as seedsmen has been of
material advantage to the Canadian
West. Their success is, no doubt, due
to the co-operation, confidence and
approval of appreciative customers.
This is indicated by the hundreds of
letters from gratified customers dis-
persed throughout the catalog, for
only an appreciative and highly
pleased public would take the trouble
and pains to attest to the success,
purity, results, adaptability and other
merits mentioned.

Every buyer of seeds, whether for
profit or pleasure, owes it to himself
to see this catalog before purchasing.
Drop a post card to Brandon or Cal-
gary. It is free for the asking. Do
not forget to mention "The Farmer's
Advocate."

I
M
P
O
R
T
E
R



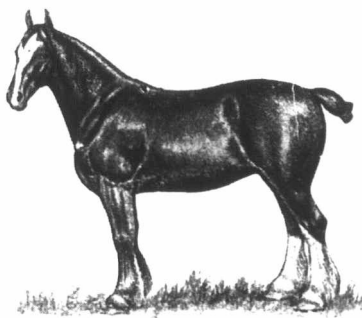
I
M
P
O
R
T
E
R

IMPORTER OF
CLYDESDALE, PERCHERON AND HACKNEY STALLIONS.

I now have my Brandon barn full of the best shipment of Clydesdale, Percheron and Hackney Stallions, and Clydesdale fillies that I have ever imported. The most of the Clydesdales are sired by that great breeding horse "Hiawatha." Stallions range from two to four years. I have no pony Clydes; they are all draft Clydes. I invite lovers of good horses to see them. You will see the best lot you ever saw in Canada. I can sell them so cheap you will wonder how I can buy them and sell them at the price. I sell them cheaper than any other importer for these reasons:—(1) I select my horses personally in the Old Country; (2) I purchase for cash; (3) I do my own selling at the barns; (4) I have no partners to divide profits with; therefore any reasonable business man will understand why I can sell cheaper than any importer in the business. I would be pleased to have you come and see my stock and get prices before you buy. A reasonable guarantee given with every horse sold and a quarter million dollars behind the guarantee.

For further particulars, write—

J. B. Hogate, Brandon, Man.

FOREST HOME
Clydesdales

Our recent importation consists of
thirteen mares and fillies and two colts.
Three are by "Baron's Pride," others rich
in the best blood of breed. This bunch
was very carefully selected and combines
with the best of breeding, very large sizes
and quality of a very high order. In-
tending purchasers should see this lot
before investing.

Carman, C.P.R., C.N.R. and C.N.R. Roland, C.N.R. and C.N.R. Telephone, Carman Exchange

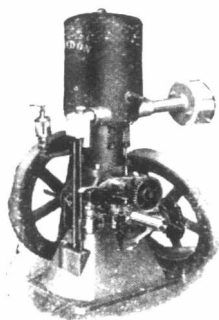
Andrew Graham,

Pomeroy, Man.

HUDSON'S BAY COMPANY

LEASING OF LANDS

The company is prepared to lease
for hay and grazing purposes all re-
served quarters or half sections. For
particulars apply the Land Depart-
ment, Hudson's Bay Company, Win-
nipeg.



"LONDON" Gas and Gasoline Engines

Give Most

POWER
ECONOMY
SATISFACTION
ENGINE VALUE

CATALOGUE 20 G. for the asking

Engine 1½ to 50 H.P.

Sole Manufacturers

SCOTT MACHINE COMPANY, Ltd.

London, Can.