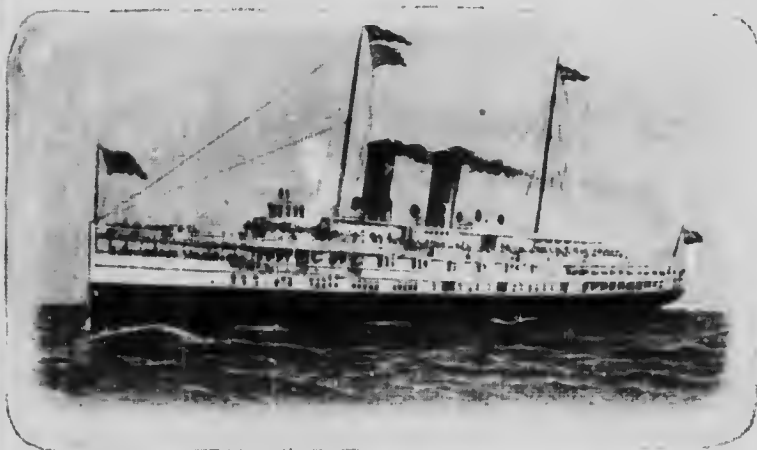


## THE NEW SHIP "CAYUGA."

The fleet of the Niagara Navigation Company will this season be increased by a new steel twin screw ship which in speed, comfort and beauty will be unsurpassed upon the great lakes. Her name "Cayuga" has been selected to harmonize with her sister ships the "Chippewa," "Corona" and "Chicora." Her engines are of the twin screw vertical, inverted, direct-acting quadruple expansion type, capable of driving the ship at railroad speed across the lake. Seven powerful Scotch boilers will generate steam.

Many new features have been introduced in the steamer's interior arrangements. The dining room is located up-stairs on the main deck, and patrons while at table may enjoy the lake and river scenery through observation windows.



NEW TWIN SCREW STEAMER CAYUGA

The upper promenade deck, which ordinarily ends in front of the pilot house, is extended to the stem, affording unusual accommodation for passengers and also sheltering the promenade deck below. A light shade deck amidships serves as an awning over the upper promenade deck.

The cabin appointments are as perfect as experienced knowledge of the needs can make them. The woodwork in the dining-room is Flemish oak, and other portions of the ship weathered oak, handsomely panelled, with a heavy beam ceiling in the entrance hall. Aft of the main entrance is the ladies' cabin, and on the deck above, reached by a broad stairway in cathedral oak, the general saloon cabin. Special thought has been given to the arrangement of this room. It occupies the full width of the ship. The sides instead of being straight consist of a series of bow windows with upholstered seats, forming inviting corners where uninterrupted views may be obtained.