

LONDON

CANADA

MANUFACTURE IN LONDON . . .

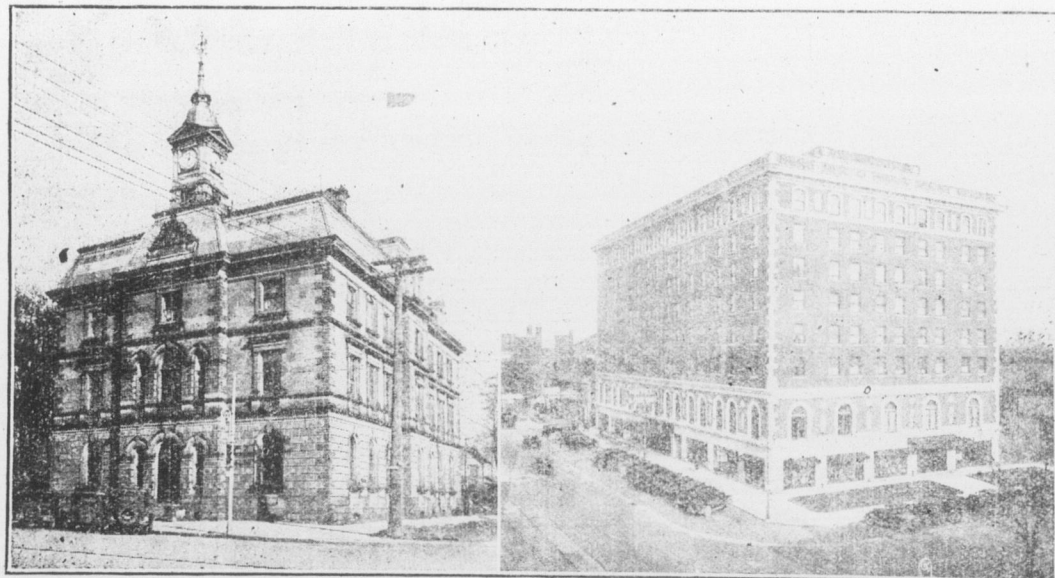
London has many distinct advantages to offer prospective manufacturers, combining as it does many features essential for profitable manufacturing. It is a city large enough to have an abundance of labor available at all times. More than 80 per cent of the citizens are of Anglo-Celtic origin, and manufacturers are enabled to build up working forces of high quality. A very large percentage of citizens own their own homes, a fact which partly accounts for the remarkable stability of labor conditions here. Labor troubles are foreign to London.

It is a point at which raw materials can be assembled quickly and economically and as a distributing centre it has no superior in Canada. The city is served by the Canadian National, Canadian Pacific, the Michigan Central operating its own terminal in London, Pere Marquette and Wabash, the latter three roads operating jointly with the London and Port Stanley Railway, a modern municipally-owned and operated electric road connecting the city with Port Stanley, the largest and best-equipped harbor on the north shore of Lake Erie. Interswitching facilities on terms very advantageous to shippers exist between all lines entering the city. Lake shipping facilities at Port Stanley include a daily freight and passenger service to Cleveland, by Steamships of the Cleveland-Canada Division of the Cleveland and Buffalo Transit Company. There is also a daily car ferry service between this port and Conneaut Harbor, Ohio. The Canada Steamship Lines, the largest operating on the Great Lakes, and Tree Line freighters, make Port Stanley a regular port of call for east and west bound service.

The city owns and holds for disposal at reasonable cost to manufacturers, large acreage on trackage eminently suitable for industrial purposes.



Below (left Customs Office. (right) Hotel London



STREET SCENES



Strategically Situated

F. H. CURRAN,
Chairman No. 1.

GEO. HAYMAN,
Mayor.