

A. B. C. & A. 1 Codes used.

Telegraphic Address, Latch, Haymills.

LATCH & BATCHELOR, Ltd.

AMALGAMATED WITH
WEBSTER & HORSFALL,
(ESTABLISHED 1730.)

Works: **HAYMILLS, BIRMINGHAM, ENGLAND.**

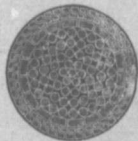
AGENT: **H. M. WYLDE,** P O Box, 529 **HALIFAX N. S.**

Patentees and Manufacturers of

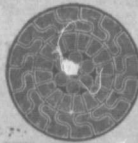
Locked Coil and Flattened Strand **WIRE ROPES.**

Manufacturers of all Kinds of **WIRE ROPES** for

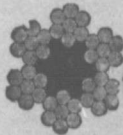
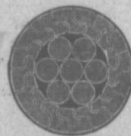
**Mines, Tramways, Aerial Ropeways, Suspension
Bridges, Cranes, Elevators, Transmission of
Power, Steam Ploughing and General
Engineering Purposes.**
MOTOR, CYCLE and Other Brakes



Locked Coil Winding.



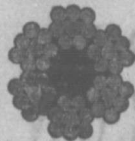
Locked Coil Aerial or Colliery Guide.



Lang's Lay or Ordinary



Flattened Strand Winding or Hauling.



Flattened Strand, (non spinning)
**HIGH CLASS
STEEL WIRE.**



ALL SECTIONS OF WIRE DRAWERS
for Ropes, Springs, Pianos, Needles, Fish-Hooks
Building Armatures and all other Purposes.