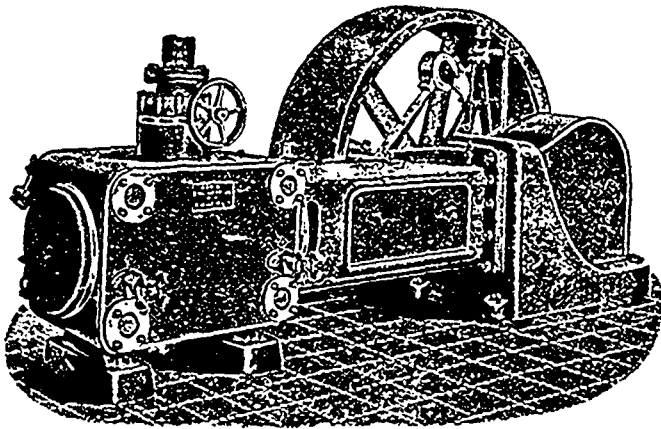


ROBB CORLISS ENGINES



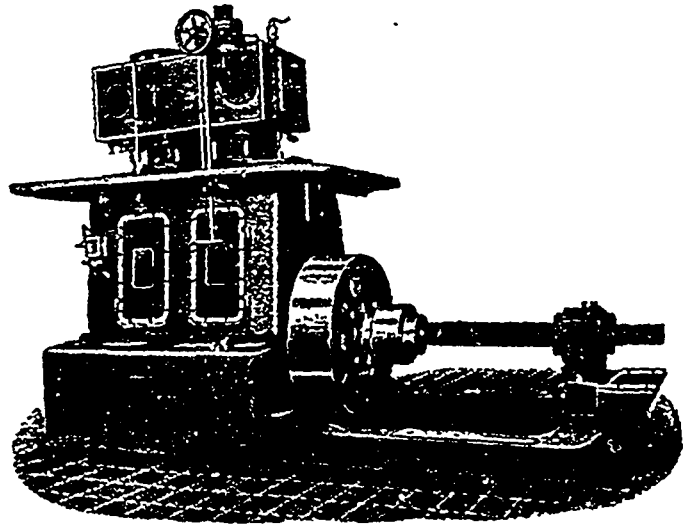
Are fitted with Robb-Armstrong Corliss valve gear, which has the following good points:

**POSITIVELY DRIVEN
ENCASED IN OIL
RUNS NOISELESSLY
MINIMUM FRICTION
MINIMUM WEAR**

We manufacture high speed vertical enclosed engines of the English type, up to 750 horse power.

The oiling system of these engines is under a pressure of 15 lbs. to the square inch, ensuring a 'copious supply of oil to all bearings.

They have Robb-Armstrong automatic governors and Sweet balanced valves giving the best regulation and highest economy.



Complete Power Plants

ROBB ENGINEERING Co., Limited, AMHERST, N.S.

DISTRICT } 320 Ossington Avenue, Toronto; Wm. McKay, Manager.
OFFICES } Bell Telephone Building, Montreal; Watson Jack, Manager.
365 Carlton Street, Winnipeg; J. F. Porter, Manager.