

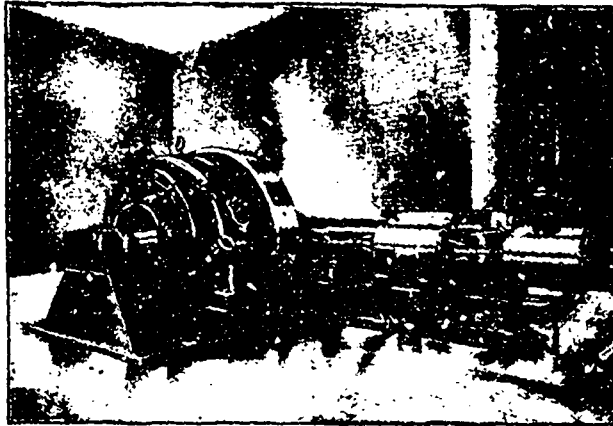
# IDEAL HIGH SPEED ENGINES

PERFECTION IN HIGH SPEED ENGINE DESIGN, NOISELESS RUNNING,

PERFECT  
LUBRICATION

ACCESSIBILITY

ECONOMY



ASK FOR  
BULLETIN No. 6

QUOTATIONS  
CHEERFULLY  
GIVEN

## THE GOLDIE & McCULLOCH CO., LIMITED

GALT

ONTARIO

CANADA

WE MAKE Wheelock Engines, Corliss Engines, Ideal Engines, Boilers, Pumps, Flour Mill Machinery, Oat Meal Mill Machinery, Oat Meal Steam Pan Kilns, Wood Working Machinery, Iron Pulleys, Wood Rim Split Pulleys, Shafting, Hangers, Gearing, Friction Clutch Pulleys, Friction Clutch Couplings, etc., Safes, Vaults and Vault Doors. Write for Catalogue.

Western Branch:

248 McDermott Ave., WINNIPEG, MAN.

# MORISON Suspension Furnaces

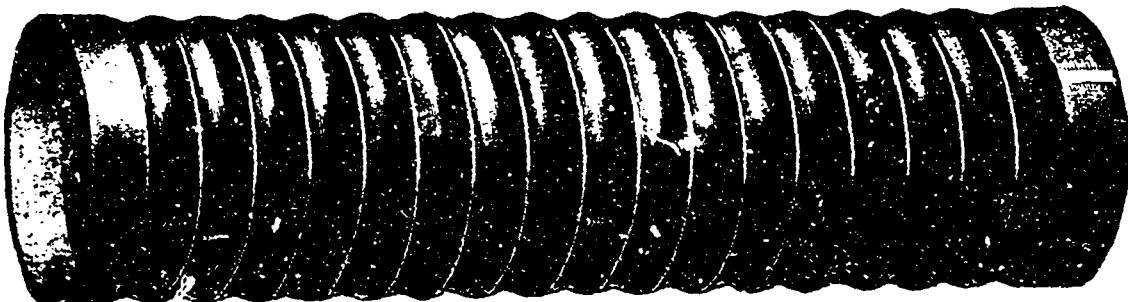


For Land and Marine Boilers

With Plain Ends or Flanged to any required shape.

Uniform Thickness, Easily Cleaned, Unexcelled for Strength, Unsurpassed for Steaming Capacity.

*The universally satisfactory record of "THE MORISON" proclaims it the best furnace made.*



MANUFACTURED BY

THE CONTINENTAL IRON WORKS,

WEST AND CALVER STS.,  
BOROUGH OF BROOKLYN,  
Near 10th and 23rd Street Ferries.

New York

Sole Canadian Agent—MR. GEORGE HOLLAND, M. C. Soc. C. F., P. O. Box 529, MONTREAL