

Ship Your Grain

G. B. MURPHY & CO., WINNIPEG

will get the Highest Prices.

REFERENCES: EASTERN TOWNSHIPS OR UNION BANK.

THE NEW
NORTH-WESTERN LIMITED
ELECTRIC LIGHTED

THE MOST COMFORTABLE
Convenient, Unique and Beautiful
Trains ever placed in service between
Minneapolis, St. Paul and Chicago.

ONE OF THE MANY FEATURES
is the Longer Berths in Sleepers,
several inches longer than the usual
standard.

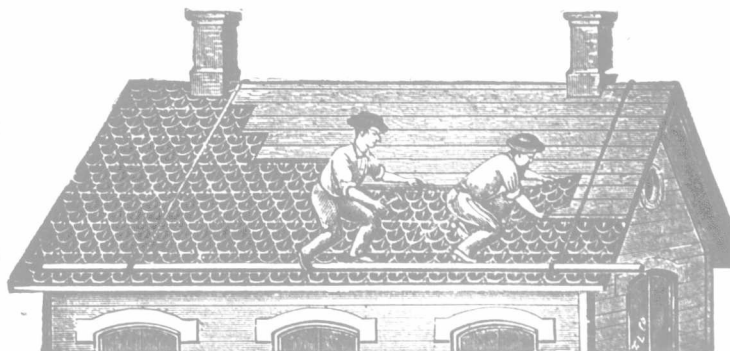
COMFORT EVERYWHERE

GEO. A. LEE, General Agent,
215 McDermot Ave. Phone 1924
WINNIPEG.

THE
NORTH-WESTERN
LINE

"Oshawa" Steel Shingles

Wind,
Water,
Storm
and
Fire
Proof.



Locked
on
All
Four
Sides.

Made from Painted or Galvanized Steel, at prices varying from \$2.85 to \$5.10 per hundred square feet, covering measure. This is the most desirable covering on the market, and is an ideal covering for Houses, Barns, Stores, Elevators, Churches, etc. Any handy man can lay the "OSHAWA" shingles. A hammer and snips are the only tools required.

We are the largest and oldest company of the kind under the British flag, and have covered thousands of the best buildings throughout Canada, making them

FIRE, WATER AND LIGHTNING PROOF.

We also manufacture Corrugated Iron in long sheets, Conductor Pipe and EAVES-TROUGH, etc.

METAL SIDING, in imitation of brick or stone.

METAL CEILINGS, in 2,000 designs.

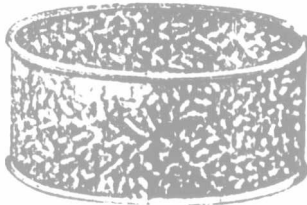
Write for Catalogue No. 14R and free samples of "OSHAWA" Shingles. Write to-day

THE PEDLAR PEOPLE

Montreal, Que. 321-323 Craig St. W.	Ottawa, Ont. 423 Sussex St.	Toronto, Ont. 11 Colborne St.	London, Ont. 69 Dundas St.	Winnipeg, Man. 76 Lombard St.	Vancouver, B.C. 615 Pender St.
---	--------------------------------	----------------------------------	-------------------------------	----------------------------------	-----------------------------------

Write Your Nearest Office—HEAD OFFICE AND WORKS, OSHAWA, ONT

STEEL TANKS FOR ALL PURPOSES.



Corrugated
and Plain.
Galvanized
Steel Tanks.
Portable
Grain Tanks.

RED RIVER METAL CO.
15 & 53 Alkins St. Winnipeg

ARTISTS
COMMERCIAL
HOLTBY
&
HATHAWAY
ILLUSTRATING
DESIGNING
ENGRAVING
50 PRINCE ST.
PHONE 4043
WINNIPEG.

B. P. RICHARDSON

BARRISTER, SOLICITOR
NOTARY PUBLIC

Solicitor for the "FARMER'S ADVOCATE" for the
Northwest Territories.

GRENFELL, ASSA.

LANDS FOR SALE

FERGUSON & RICHARDSON

Barristers, Solicitors, Etc.

Canada Life Building

Winnipeg, Canada

Solicitors for Farmer's Advocate

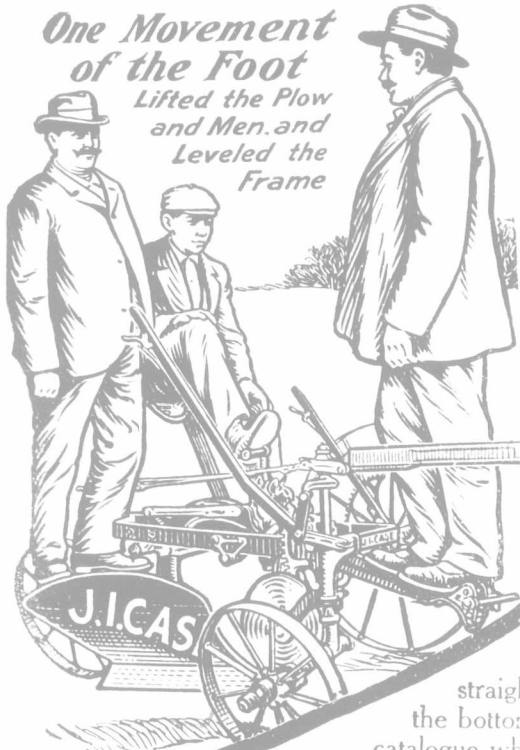
R. FERGUSON

W. W. RICHARDSON

ESTABLISHED IN 1842
FREE! FREE! FREE! ABSOLUTELY FREE.

\$100,000 PRIZES GIVEN AWAY FREE.
As an advertisement we give you absolutely free a ladies' or gents' size silvered, gold-filled or gun metal Watch, guaranteed for 10 years, and keeps correct time to a second, or a sterling silver handle umbrella, silvered clock, a real diamond solid gold Government hall-marked stamped Ring, Cutlery, Leather Goods, Musical Instruments, Mechanical Toys, Blue Fox Collarette, besides hundreds of other useful or fancy articles which you can select from our grand 1906 list. We give any of these articles free to any person selling 20 Packets of beautiful up-to-date Artistic Pictorial Postcards at 10c. a packet (5 magnificent 10-colored cards to a packet). Our Pictorial Cards are world-renowned, and we send you every card different, no two alike. Views of dear old England, Historical Views, Latest Comics, fac-simile of Death-warrant of King Charles I., England's Most Beautiful Actresses, etc., etc. It need not cost you one cent of your own money. We pay all postage and duty, and deliver cards and present free to your address. Send us at once your name and address. (Postage is 2 cents). Don't delay. Write immediately to **ACTE & COMPANY** (Dept. F.A.), 85 Fleet St., London, E.C., Eng.

One Movement
of the Foot
Lifted the Plow
and Men and
Leveled the Frame



A Marvelous Plow

The J. I. Case Self-Leveling High Foot-Lift Sulky Plow is a marvel in more ways than one. It has brought out many advantages that were heretofore thought impossible. The picture tells the story of the wonderful lifting power of the foot lever. The boy, with his foot alone not merely lifted this great weight, but he raised the plow bottom from six inches under ground to six inches above ground and at the same time leveled the frame. Two results with one operation. This single lever feature is original with J. I. Case plows and is a great labor saver. Other so called foot-lift plows require the handling of a hand lever in order to level the frame, else the operator must ride in an uncomfortable position. The J. I. Case Self-Leveling High Foot-Lift Sulky Plow while having a powerful leverage in the foot-lever is aided by a strong lifting spring. That is why a boy can easily lift the bottoms way up high in the frame out of the way of trash. Then the foot lever and height of seat can be quickly adjusted to suit the reach of a tall or short person. This makes the high foot-lift, self-leveling feature equally effective for any size of operator. Other important advantages are: The bottom enters the ground point down heel up and starts plowing at once. It comes out point up, heel down. It stays in no matter how hard the soil. It plows straight on the roughest ground. It is light draft because the friction of the bottom is carried on the wheels instead of the ground. Write for our catalogue which fully describes this marvelous plow and the entire J. I. C. line. **Farmers Encyclopedia FREE** 1906 pages bound in cloth. Simply tell us what implements you will need the coming season, enclose ten cents for packing and postage, with the name and address of your dealer. Address **J. I. Case Plow Works., Dept. M33 Racine, Wis.**

J. I. Case
SELF-LEVELING
HIGH FOOT-LIFT
Sulky Plow