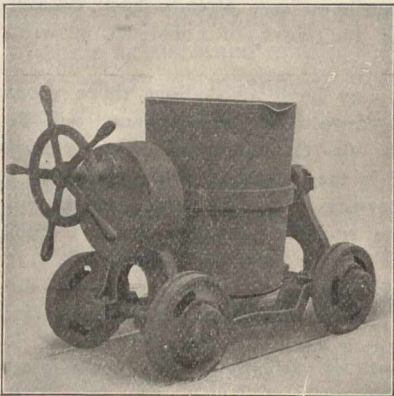
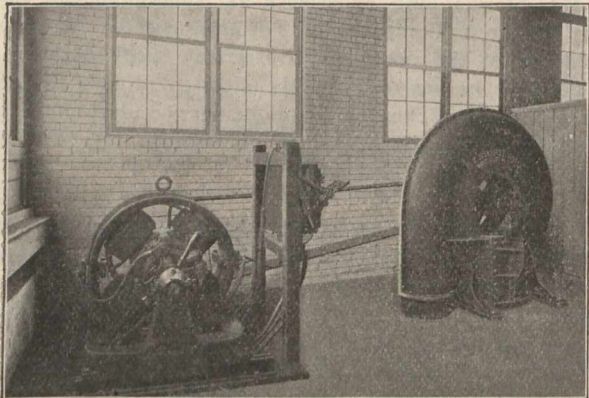


The Canadian General Electric Co.'s works, the Canadian Cordage works, the Cereal Co.'s concrete dam across the Otonabee and power house under construction, which will furnish power for lighting the streets, operating the street railway and driving the machinery in the cereal factory and other industries, the Wm. Hamilton Foundry, and other works were visited, and much that was novel and interesting observed. Some of the party went to Lakefield and saw the Lakefield Portland Cement Works. These works have been in operation a couple of years and turn out what is known as the Monarch brand at the rate of 700 barrels a day. The marl comes from Buckley's Lake, not far away, and is brought on dump cars and emptied into the mixer without handling. The clay comes from Lily Lake, near Peterboro. The company generate their own electric power at a fall close at hand on the Otonabee. They have a coal pulverizing plant to reduce the coal used in the drying process to fine dust, which is injected by means of an air blast. The works are up-to-date in all respects. It was the intention of the company to double their capacity this year, but the number of cement factories being built suggested caution in this regard. A. S. Butchart is general manager.

In the evening the party dined at the Oriental Hotel, having as guests the Mayor and a number of the town council, town officials, including T. A. Hay, town engineer; R. B. Rogers, chief engineer of the Trent Valley Canal, Messrs. Francis and Easson, assistant engineers; Mr. Patterson, manager of the General Electric Works, and others. A number of graduates of the School, employed at Peterboro, were also present. Principal Galbraith occupied the chair, and a pleasant social time was spent till the hour arrived to leave for home. The day was in all respects a pleasant and instructive one.



New Works of Sturtevant Co.—One-ton Geared Truck Ladle.—See Page 299.



New Works of Sturtevant Co.—Cupola Blower Outfit.— See Page 299.

BRITISH TRADE WITH CANADA.

British Board of Trade returns on trade with Canada show a decrease of exports to Canada for September of over 27 per cent., and for the nine months of 1903 an increase of 9¼ per cent. The imports from Canada for

September show an increase of over 26 per cent. and for the nine months an increase of 19½ per cent. The figures in metals, etc., are as follows:

Exports.	Month of Sept.,		Nine Months to Sept.	
	1902.	1903.	1902.	1903.
Iron and steel, old and scrap	£7,386	£7,755	£50,985	£68,214
Bar, etc.	5,476	47,479
Railroad	91,187	30,699	310,932	372,805
Hoops, sheets, etc. ..	20,561	9,475	102,322	92,860
Galvanized sheets ...	27,464	10,758	144,529	112,127
Iron, cast, wrought, etc.	9,984	79,367
Steel, unwrought ...	51,439	266,331
Steel bars	25,100	163,029
Tinned plates	28,452	13,002	209,012	241,726
Sheets and plates	16,873	118,552
Lead	2,125	4,365	22,016	22,409
Tin, unwrought	5,076	3,130	29,981	21,194
Cutlery	6,348	5,713	46,688	56,831
Hardware	2,246	3,342	23,012	27,311
Cement	2,452	3,280	12,509	41,432

The imports were all natural products.



New Works of Sturtevant Co.—Two-ton Transfer Ladle Truck.—See Page 299.

FAIRBANKS CO.'S NEW BRANCH HOUSE.

The Fairbanks Co., of Montreal, have taken the premises at 41 Front Street West, Toronto, next to H. S. Howland, Sons & Co., and will be in a position to make shipments from that point from November 15th. H. J. Fuller, general manager of the Fairbanks Company of Canada, has appointed C. J. Brittain as local manager, M. C. Mullarkey, of the Montreal house, will have charge of the accounting room, and D. T. White, of headquarters staff, will have charge of the floor sales. J. S. Sanson will continue to cover the territory of the northern part of Ontario, and T. G. Hubbard the western portion. The staff will be further increased shortly. The valve department will handle a full line of Fairbanks asbestos disc valves, Pratt & Cady gate and check valves, asbestos packed cocks, W. I. pipe, valves and fittings, as well as a line of steam specialties manufactured by the American Steam Gauge and Valve Co., of Boston, Mass., for whom they are sole Canadian agents. In the transmission department they will handle a full line of shafting, hangers, belting, pulleys and supplies. In the machine tool department they will make a specialty of the Niles Bement-Pond Co., and the Pratt & Whitney Co.'s product, for whom they are sole Canadian agents. Besides this they will have a line of the American Tool Works Co.'s tools, Yankee twist drill grinders, Greenard arbor presses, and all kinds of machine shop supplies. The gas and gasoline engine department will be in a position to supply Fairbanks' gas and gasoline engines, both vertical and horizontal types, from 1 to 100-h.p. The asbestos department will confine itself to the product of the H. W. Johns-Manville Co., of