

A Waterous Pump for Every Service

¶ By this we mean that whether you are draining a mine, are pumping sewage, or cofferdam excavating, or using a pump in one of the many different ways it may be applied, **we have the right pump and the best pump for your work.**

¶ Built in sizes up to 14 in. discharge opening, the Waterous pumps are adaptable for motor, engine or belt drive. Both Vertical and Horizontal types are manufactured. They contain special features of exceptional merit—split base, split packing gland, reversible barrel, and wear proof runners. They are simple, compact, durable, and run with little power.

¶ No matter what your special needs may be we are confident that we can supply the pump that will fill them most satisfactorily.

HAVE YOU WRITTEN FOR OUR CATALOGUE
No. 200?

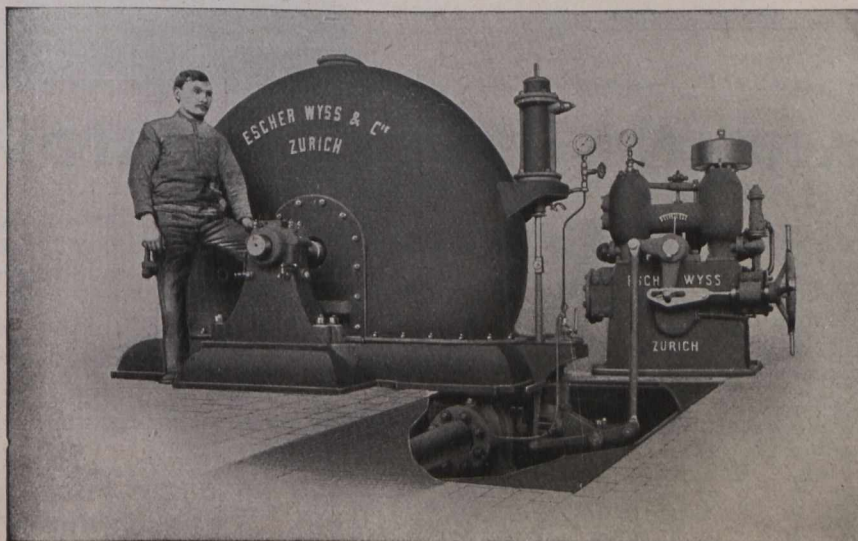
The Waterous Engine Works Co.
LIMITED,
BRANTFORD - CANADA

Escher Wyss & Company

Zurich (Switzerland)

Specialties:-Water Turbines and Pressure Pipelines

Turbines
from
one-half
to
16,000
h.p.



For any
head
and any
quantity
of
water

London Office:-- 109 Victoria St., S.W.