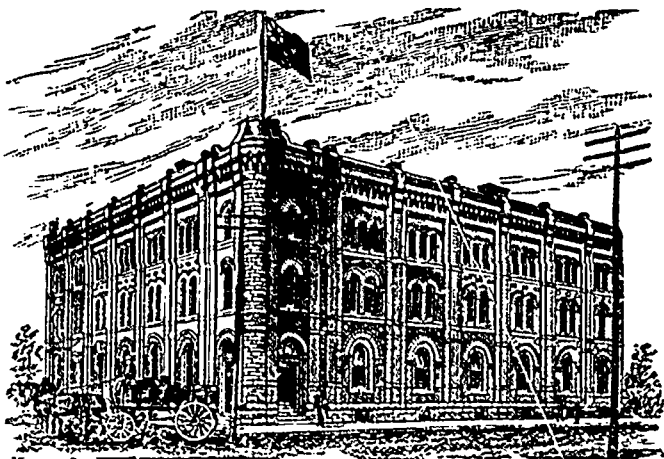


GOODS SOLD TO THE
TRADE ONLY.GOODS SOLD TO THE
TRADE ONLY.

G. F. & J. GALT,

DIRECT IMPORTERS
TEAS, SUGARS, WINES, LIQUORS and GENERAL GROCERIES
CORNER PRINCESS AND BANNATYNE STREETS, WINNIPEG, MANITOBA.

JOHN PARSONS.

W. J. PARSONS.

R. A. ROGERS.

THE PARSONS PRODUCE CO.,

R. A. ROGERS, Manager.

—WHOLESALE PACKERS AND JOBBERS OF—

Fancy Dairy and Creamery Butter, Eggs, Apples,
AND DRESSED POULTRY.

GENERAL COMMISSION MERCHANTS.

175 Main Street, Cauchon Block,
Telephone 620.

Winnipeg, Man.

REFERENCES: Imperial Bank of Canada, Winnipeg, Man. and Parkhill Banking Co., Parkhill, Ont.

Grocery Prices at Toronto.

Sugars, Syrups and Molasses—Syrups quiet. Low grades are more plentiful, and dark is now offered at 50c in half bbls. Molasses firm but not active. Ordinary West Indian are moving at 33 to 42c in bbls. Sugars are: Granulated, 1 to 15 bbls., 6½c; do., 15 bbls. and over, 6½c; Paris lump, boxes, 7½c; extra ground, bbls., 7½c; do., boxes or less than bbls., 8½c; powdered, bbls., 7c; do., less than bbls., 7½c; refined, dark to bright, 5 to 6c.

Teas and Coffee—Japans are arriving and are selling freely at steady prices. Cables report the primary markets firm, especially on low grades; the higher grades are better value. Blacks are dull and without change. Greens are easier, the demand now running on Japans. Coffees are quiet and without change. Rios, 22 to 23c; Jamaica, 22 to 23c; Java, 26 to 35c; Mocha, 29 to 35c; Porto Rico, 25 to 28c.

Rice, Spices, etc.—Rice, bags, 3½ to 4½c; do, off grades, 3½ to 3¾c; do, Patna, 6½ to 6¾c; do, Japan, 4½ to 5½c; Carolina, 5 to 5½c; sago, 3½ to 4½c; tapioca, 4½ to 6c; pepper, black, 22 to 25c; do., white, 25 to 40c; ginger, Jamaica, 25 to 30c; cloves, 25 to 40c; allspice, 12 to 15c; nutmegs, 95 to \$1.20; cream tartar, 25 to 50c.

Dried Fruit—The feature of the market is the weakness in prunes owing to the decline in New York and the low offers made from there;

local dealers are mostly liberally stocked with goods which cost them more than they can now get. The small sized in cases are offering at 7½ to 8c, which cost about 8½ here. Casks offer at 7c. Currants are firm, with a fair demand at 6½ to 6¾c in bbl and halves. Valencia raisins are irregular, selling from 5 to 6c for off-stalk, according to quality. Fancy selected layers offer at 7½c. Sultanias are quiet at 15 to 16c. Advices from Europe say that the new crop is generally in an excellent condition. Brokers are soliciting orders for fall delivery, and a few have been placed for well known brands at open prices. Currants, barrels, new, 6½ to 6¾c; half barrels, 6½ to 6¾c; cases, 6½ to 8c; Vostizza, new, cases, 7½ to 9½c. Raisins, Valencias, 5 to 6c; do, selects, 7½ to 8c; do, layers, 8½ to 9c; sultanias, 15 to 18c; London layers, \$2.50 to \$2.75. Prunes, cases, 7½ to 8½c; do, hogsheds and bags, 6½ to 7c. Figs, natural bags, 4½ to 5c; Malaga mats, \$1 to \$1.25; Elemes, 10 to 20 lb., 10 to 13c. Dates, Hal owce, 5½ to 6c; old, 4c.

Nuts—Almonds, Tarragons, 15½ to 17c; Ivica 14 to 15c; filberts, Sicily, 10½ to 11c; walnuts, Grenobles, 16 to 17c; Marbots, 12 to 13c; Bordeaux, 12 to 12½c.

Canned goods—Vegetables and fruits are generally firm at last quotations. Fish is more active and firmly held. Salmon is going at \$1.40 to \$1.55; sellers are making slow progress.

C. H. Mahon & Co.

BOOTS AND SHOES,

WINNIPEG, - MANITOBA.

Mitts, Moccasins, Felts and Rubbers.

A FULL ASSORTMENT OF

TENNIS AND LACROSSE SHOES,

—AND—

OXFORD TIES.

HUTCHISON, DIGNUM & NISBET,

Manufacturers' Agents and Merchants,

LINENS, IMPORTED WOOLLENS AND TAILORS' TRIMMINGS. SELECT CANADIAN TWEEDS

55 Front St. West, - TORONTO.

—SOLE AGENTS IN CANADA FOR—

J. N. Richardson, Sons & Owsen, Belfast, - Linen Good
Currie, Lee & Gawn, Hawick, - - - - - Scotch Tweeds
R. Pringle & Son, Hawick, - - - - - Scotch Underwear
David Mosley & Son, Manchester, - - - - - Rubber Goods
J. S. Manton & Co., Birmingham, - - - - - Buttons

Stock of Linens, Tweeds and Trimmings
always on hand.

R. B. HUTCHISON.
Late Mills & Hutchison

Ed. J. DIGNUM.

R. A. NISBET

on futures, owing to the higher price asked this year; freights are \$1.10, against \$1 a year ago, and higher prices are also asked at the coast, so that good brands would be worth \$1.40 net cash here. Lobsters are going at \$2.10 for good ordinary brands, with clover leaf flat at \$2.75. Fish—Salmon, 1's flat, \$1.60 to \$1.70; do, 1's tall, \$1.35 to \$1.55; lobsters, clover leaf, \$2.75; lobsters, other 1's \$2 to \$2.30; mackerel, \$1.40 to \$1.50; sardines, French, ½'s, 9 to 11c; sardines, French, ¾'s, 14 to 22c; sardines, American, ½'s, 6 to 8c; sardines, American, ¾'s, 9c. Fruits and vegetables—Corn, 2's, \$1.10 to \$1.25; corn, cream, 3's, \$1.75 to \$1.80; peas, 2's, \$1.30 to \$1.50; beans, 90c; pumpkins, 75c; strawberries, 2's, \$2.25 to \$2.40; tomatoes, 3's, \$1.50 to \$1.60; apples, 3's, \$1.10 to \$1.15; gallons, \$3 to \$3.20; peaches, 2's, \$2.50 to \$2.75; peaches, 3's, \$3.50 to \$3.75; plums, 2's, \$1.60; 3's, \$2.60; pears, \$2. —Empire.

Lumber Cuttings.

John A. Christie, of the Brandon saw mill, has a large gang of thirty men at work on his drive of logs. The heavy rains will have the effect of driving all the logs down to Brandon this year.

The Canadian Pacific Timber & Lumber company have commenced driving piles for their new mills on Lulu Island, Fraser river, near New Westminster, B. C. The building of the mill will be pushed ahead with all possible despatch.

The new saw mill at Chemainus, Vancouver Island, the property of Victoria Lumber and Manufacturing Co., has started work. The machinery used is of the latest and most improved pattern and capable of cutting 250,000 feet per diem when running full blast.

Shelton & Co., furniture, Vancouver, are having an elevator put in their store.